

# catnic®

Roofing | Cladding | Solar

## Catnic Urban

Steel solutions for sustainable buildings

Catnic — A Tata Steel Enterprise





# Contents

|   |       |
|---|-------|
| <b>Build better with Catnic</b>         | 4-5   |
| <b>Catnic Urban roofing</b>             | 6-7   |
| Features & benefits                     | 8-10  |
| Design considerations                   | 11-15 |
| <b>Catnic Urban cladding</b>            | 16-17 |
| Features & benefits                     | 16    |
| Design considerations                   | 17    |
| <b>Catnic SolarSeam®</b>                | 20-21 |
| Features & benefits                     | 22-23 |
| <b>Certifications &amp; credentials</b> | 24    |
| <b>Guarantees</b>                       | 25-26 |
| <b>Service &amp; support</b>            | 27    |



# Build it better with Catnic

Since its formation in 1969, Catnic has pioneered steel construction products for house building and become a prominent manufacturer in the UK.

We have now expanded our product portfolio to include Catnic Urban, an innovative standing seam roofing and wall cladding solution.

Part of the Tata group, Catnic is based in South Wales and has established itself as a multinational manufacturer, supplying lintels, standing seam roofing and cladding, together with plastering accessories and metalwork to over 60 countries from three European manufacturing and distribution sites.



# Our range

The Catnic standing seam range combines our steel industry heritage and manufacturing pedigree to deliver the performance and sustainability credentials needed to future proof construction.



## Catnic Urban

### A standing seam roofing and cladding solution

Catnic Urban is an innovative, light-weight and versatile standing seam roofing and cladding system. Specially designed for the urban environment it is typically seven times lighter than conventional roof tiles and available in a variety of inviting colours.



## Catnic SolarSeam®

### A bonded solar solution

Catnic SolarSeam, powered by CIGS (Copper Indium Gallium Selenide) technology consists of a flexible bonded laminate, integrated into the roofing profile to allow home owners to reap the rewards of solar power without sacrificing the overall aesthetic of their home.





# Introducing Catnic Urban

## Seams perfect

From modern new builds to renovations and conversions, homeowners and architects are increasingly choosing metal roofing solutions. However, if it's an area you've yet to explore, Catnic Urban may be just what you're looking for.

Catnic Urban is an easy to fit system that provides a modern alternative to traditional slate, concrete or clay tile installations. Offering a genuine, robust alternative to copper and zinc, without the price tag.

Customers love the system's aesthetics and sustainability credentials, whilst contractors find it easy to handle and quick to fix. In fact, the system is supplied as a complete kit of parts to make installation as straightforward and speedy as possible.



## Key benefits of Catnic Urban



Uncompromised aesthetic, modern curb appeal



Quick fit system, easy installation



7x lighter than traditional concrete tiles



Suitable for roof pitches down to 5 degrees



Solar ready, available with integrated solar panels or clips for traditional clip and fix solar modules



BBA Approved & UKCA Marked to BS EN 14783:2013



BRE A+ rated, for lowest environmental impact



Responsibly sourced, made in UK



25-year Confidex® Home Guarantee



Available in 8 standard colours





# Roofing Features & Benefits

## Design flexibility

Catnic Urban makes it easier to achieve your desired finish – no matter how ambitious the design.

Our standing seam roofing solution can be fitted down to pitches as low as 5 degrees and enables projects to be finished with simple and unobtrusive detailing, designed to scale and complement the buildings size. This complete solution helps create innovative, high performing, low maintenance buildings.

## One design. One delivery

Supplied as a complete kit of parts, Catnic Urban negates the need to source components from third parties.

In one single delivery, you can expect to receive all standard fabrications including ridge, verge and eave details. As well as roofing membrane and any additional fabrications ordered, such as fascia and soffit so your vision can come to life, without the stress.

## Simple and secure installation

Unlike more traditional metal solutions, Catnic Urban profiles do not require 'seaming' on site.

Instead, our profiles are manufactured with a unique clip and fixing strip. Installed over a fully boarded roof substrate (of 15-18mm ply or OSB3) or SIP (structurally insulated panel), profiles 'click' together for quick and secure installation.

Available in panel lengths of 2m to 12.5m, Catnic Urban reduce the labour intensive cutting, clipping and seaming on site associated with alternative systems such as zinc, copper and aluminium. Supporting fabrications and exterior trims are supplied in 3m lengths.





## Profiled to perform

Being seven times lighter than tile equivalents, Catnic Urban is easy to handle on site.

The quick fit system enables new or refurbished buildings to be weatherproofed in far less time than other methods. This accelerates build times, delivers site efficiencies and ultimately complete projects sooner.

## Solar Ready

Catnic SolarSeam combines our Catnic Urban profiles with a flexible bonded solar laminate. Allowing homeowners to reap the rewards of solar power without sacrificing the overall aesthetic of their home. **See page 20.**

Catnic Urban also allows for traditional solar panel clips to be easily attached. The fixing bracket simply screws onto the standing seam upstand and the solar mounting system can then be attached or panels fitted directly onto the brackets. This means it can be installed without the need to make holes in the roof, ensuring the integrity of the roof and reducing fitting times.



# Roofing

## Features & Benefits

### Your colour. Your choice.

Our standard range of eight popular colours provides a naturally inspired blend that is sympathetic to the urban landscape, ensuring harmonious integration with the surrounding environment.

To deliver effortless modern finishes, colour palettes have been designed to integrate seamlessly with different facades including glass, brick, wood, stone, and render.

For anyone looking to reflect the tones of more conventional wall and roofing materials, matt shades emulate zinc, copper, aluminium, lead, and slate – all whilst ensuring a consistent and even shade to protect the building's aesthetics.

Not only is Catnic Urban available in the most popular RAL and BS colours, to ensure a seamless finish with metal window frames or doors, we supply a wide range of colour matched accessories to complement our standing seam system.

We also offer a wide variety of colours outside of our standard range. The team can provide a digital colour card upon request. Colours outside of the standard Catnic Urban range are subject to extended lead times.

|  |                            |
|--|----------------------------|
|    | Winter Sky (RAL 7040)      |
|    | Alaska (RAL 7000)          |
|    | Merlin Grey (BS 18825)     |
|    | Anthracite (RAL 7016)      |
|    | Oxidised (RAL 050 20 10)   |
|  | Terracotta (BS 04C39)      |
|  | Green Grey (RAL 150 40 10) |
|  | Patina (RAL 180 70 25)     |

British Standard or RAL reference numbers shown above, represent the nearest colours and are not exact matches to Colorcoat HPS200 Ultra®.

Catnic Urban standard colours are all supplied in matt unless otherwise requested.



### Free colour swatch samples

Contact us at [catnic.urban@tatasteleurope.com](mailto:catnic.urban@tatasteleurope.com) or call **01244 892449**. Alternatively, scan our QR code to request a sample.



← Scan to order



### Got a question?

To discuss the wider colour range, speak to a member of our team today **01244 892449**.



# Roofing Design Considerations

## A flexible roofing solution for a wide range of projects

The versatility of Catnic Urban means a wide range of roof designs are possible.

These include simple modern designs such as mono-pitch and classic duo-pitch roofs, to more complex projects including double-pitched 'M' shaped roofs.

Catnic Urban can also be used for lean-to roofs or dormers, making it ideal for extensions to existing buildings as well as for lower height sections of new build properties.

Whatever the design requirement, the Catnic Urban team can offer guidance and technical support to ensure the success of the project.

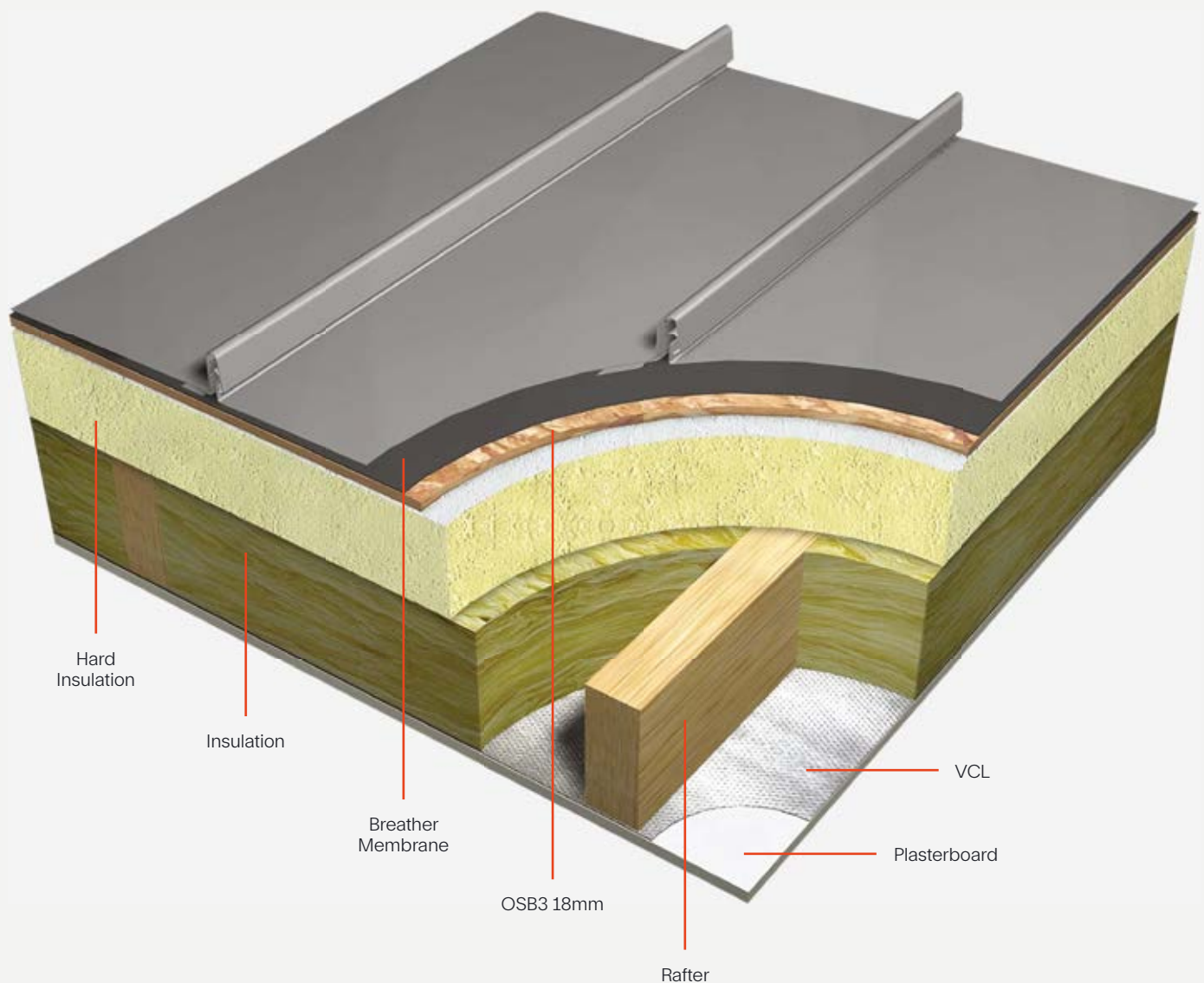


# Roofing

## Design Considerations

### Warm roof build up

In warm roof build ups the insulation is installed above the rafter level so the roof space is warm. This construction method is used when the roof space will be used as a habitable area.



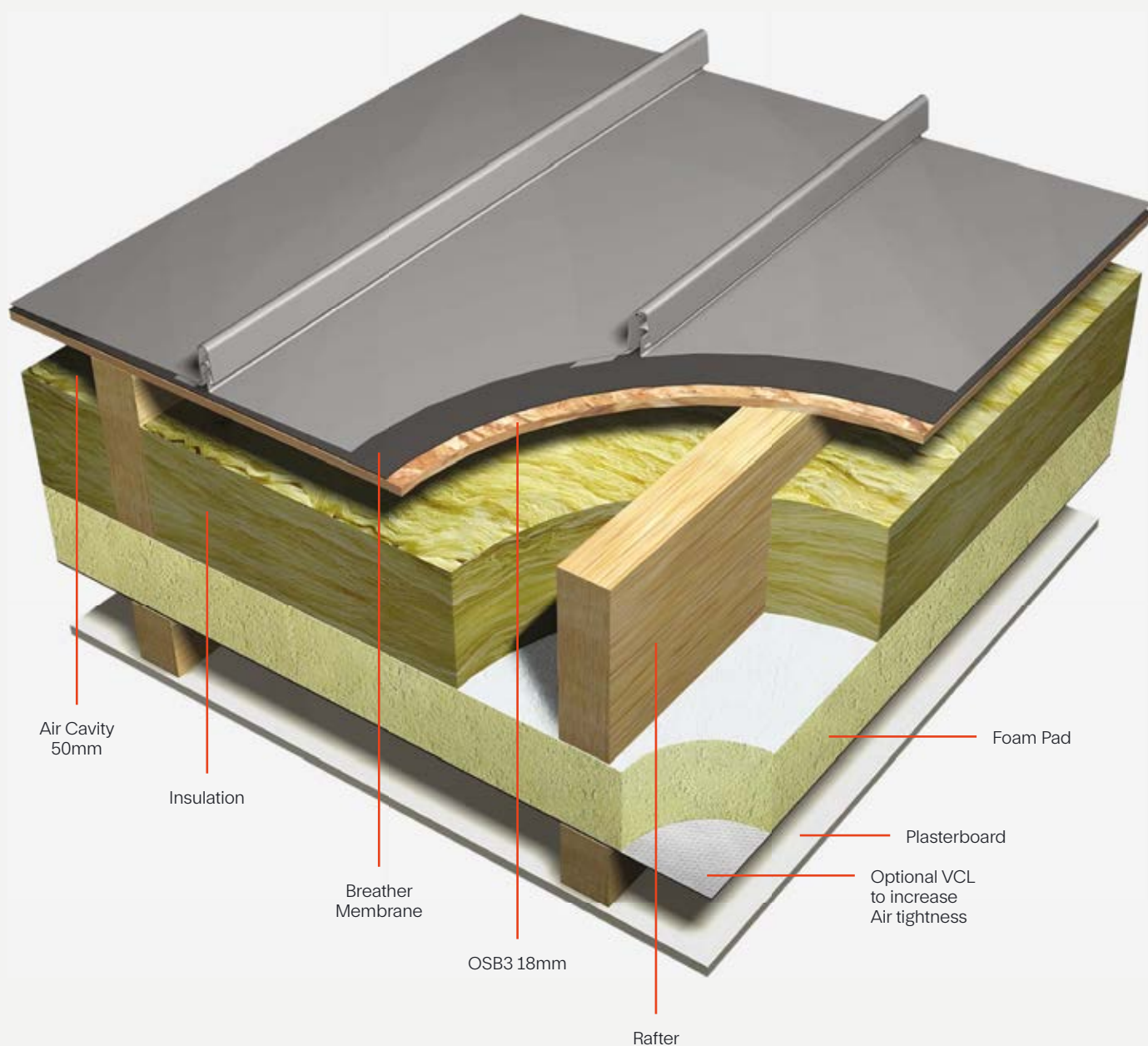


# Roofing

## Design Considerations

### Cold roof build up

In cold roof build ups the insulation is installed at the ceiling joist level so the roof-space is effectively cold. Consideration must be given to ensure adequate roof-space ventilation to prevent condensation.



# Roofing

## Design Considerations

### Gutters

Catnic Urban offer an external box gutter, as well as hidden gutters. The hidden gutter has been designed to suit almost any application and meet specific project requirements. Manufactured from Colorcoat® Aquatite, these hidden gutters are ideal where roofs come together or when the design seeks to create a clean edge to the roof.



### Fascia

Fascia runs along the outer edge of the roof and can cover the entire roofline. Catnic Urban fascia can be colour matched to ensure it blends perfectly with your roof and can be manufactured and delivered alongside your roof kit.



### Flashings

Custom flashings can be created to meet precise project requirements, from the simplest shapes to the most complex forms. This includes areas around louvres, fascia abutments, chimneys, apertures, dormers, and valleys.





# Roofing

## Design Considerations

### Roof lights

Where roof lights are installed bespoke flashings can be manufactured to ensure watertight installation and support the roof light manufacturers' own flashing kit. To ensure seamless aesthetics, a colour matching service is also available.



### Roof penetrations

All penetrations can be accommodated with a Catnic Urban roof. Catnic Urban can supply a range of flashing and ancillaries to suit square and round penetrations, including soil vent and stove pipes.



### Soffit

Soffit sits on the underside of the roof, and is visible when looking up at the roof from below. Catnic Urban soffit can be colour matched to your roof, providing a simple, light-weight and durable finish.



# Cladding

## Features & Benefits

### Transformative and timely

Catnic Urban cladding benefits from our broad colour range, giving you the opportunity to create a palette that blends seamlessly with its environment or make a statement. With lead times of 20 working days and quick installation thanks to the snap lock system, you can transform your building in a timely fashion.

### Limited combustibility

The Catnic Urban cladding range is extended to our Urban Seam Façade. A limited combustibility wall system suitable for use on buildings over 18m tall. The system is comprised of products that are classed as A1 or A2-s1, d0 to meet the latest Building Regulations. Allowing you to rest assured your façade system ticks all the boxes.

### Design flexibility

Catnic Urban cladding is a versatile system that can be tailored to meet your design wishes. With the option to fit the cladding horizontally or vertically, our profiles are designed with your freedom in mind.



# Cladding

## Design Considerations

### Window in cladding

The system can be cut and detailed on site to accommodate exact window and door openings. Catnic Urban can also supply associated window flashings to meet specified requirements.



### Parapet capping

Catnic Urban can provide a colour matched parapet cap to blend flawlessly with your cladding. Factored into the scheduling stage, parapet capping will be delivered with your cladding for a simple single delivery solution.



### Wall cill flashing

To divert water away from the wall and soften the interface at the cladding junction, Catnic Urban can supply a cill flashing. These can be supplied colour matched to your cladding system to ensure the junction does not compromise the aesthetic.



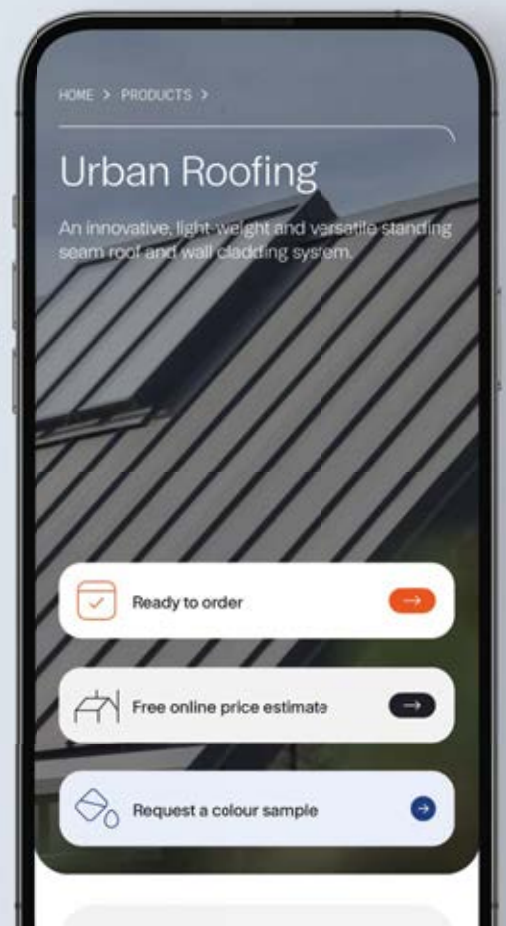




## Looking for an installer? Find your nearest online

Catnic Urban have a list of installers, who have attended the Catnic Urban training course. Find the list on the Catnic website.

Visit [catnic.com](https://catnic.com)



# Want to install yourself?

We offer a one-day, face-to-face installation course. This installation course is suited for individuals with roofing experience, enabling them to independently install their own roofs. Making it more cost effective than ever.

**Book your course today**



← Scan to book





# Introducing Catnic SolarSeam®

## Seamlessly solar

The race to Net Zero has put sustainability front and centre of UK construction. As industry drives forward environmentally conscious standards and energy prices rise, more building owners recognise the value of investing in renewable solutions.

Solar power is one of the simplest forms of renewable energy to bring into building design. Offering savings on energy bills and the possibility of generating income through feed-in tariffs, solar is fast becoming a building owners best friend.

With Catnic SolarSeam, it's now easier than ever to integrate solar panels into the building fabric, while maintaining the aesthetic of the overall design.

Combining our standing seam roofing system with bonded solar laminates, Catnic SolarSeam is able to offer an efficient solar solution that performs even in low level light conditions.

Bonded to the roof panel offsite, under factory controlled conditions, Catnic SolarSeam is able to create a low profile and seamless finish that is guaranteed to produce energy for 25 years.







## Key benefits of SolarSeam



Uncompromised aesthetic, seamlessly bonded solution



Lightweight, flexible & robust



Low maintenance, self-cleaning laminate



Plug & play solution



Low level light performance



Single installation, no secondary fixings



Fire rated, certified highest rating B ROOF(t4)



MCS accredited



Multiple guarantees; Roof, solar, energy performance



Manufactured in UK

## SolarSeam Technology

Reap the rewards of renewable energy with Catnic SolarSeam. Using technology suited to the UK climate, that saves on materials, installation and maintenance when compared to traditional crystalline modules.

# Catnic SolarSeam Features & Benefits

## Integrated & flexible design

The flexibility of Catnic Urban standing seam roofing is realised with SolarSeam. Bonded off site for ease of installation, Catnic SolarSeam arrives in a single delivery.

Negating the need for additional frames and fixings, SolarSeam is installed simultaneously with the roof panels, saving time and money on installation.

Once installed, an MCS accredited installer is needed to connect the system. Making your journey to renewable energy as smooth as possible.

## Luxury of low pitch

As with our Catnic Urban roofing, SolarSeam can be fitted on pitches down to 5 degrees\* and is available in profile widths of 514mm or 390mm to suit roof design.

\*To achieve a fire classification of Broof(t4) roof pitches must be between 10 to 70 degrees.

## Maximum energy. Minimal maintenance

The solar laminates have a textured, Teflon type top layer that provides superior self-cleaning, and minimises glare. This enhances light capture and energy performance while minimising energy loss that could be caused by dirty panels.

## Solar PV testing

Solar modules are MCS accredited. Modules are tested before and after they are fitted onto the roof, so you can rest assured that your solar system is performing as it should.

## Energy generation. Whatever the weather

Improved low level light performance, even on cloudy days provides more consistent, longer, periods of energy generation.

Energy output is maximised for the lifetime of the solar panels as they are made up of multiple diodes and cell interconnections. This means that if any cells of the panel are shaded the unshaded cells will still work.

The panels also feature a built-in redundancy for cell connections which improves the factor of safety by design in the event of a cell being disconnected.

Catnic SolarSeam is guaranteed by Confidex® Home on residential properties only.



## Reduced risk in the long term

Bonded directly onto the roofing profiles, Catnic SolarSeam benefits from being vandal and theft resistant. The system has been classified as BROOF(t4) for external fire performance of roofs and roof coverings, the highest rating possible. Meaning you can rest assured that your new roof is fire safe.

## Energy generation

For guidance on designing a Catnic SolarSeam system that meets your energy generation and aesthetic requirements, contact our team on email [catnic.urban@tatasteeleurope.com](mailto:catnic.urban@tatasteeleurope.com) or call 01244 892449.

### Colorcoat Prisma®

Catnic SolarSeam is only supplied with Colorcoat Prisma® in the following standard colours to blend with the bonded solar laminates.

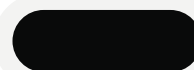
Other colours are available on request. Request a hand sample for a truer colour representation.



Slate Grey (RAL 7012)



Anthracite (RAL 7016)



Black (RAL 9005)

RAL reference numbers shown above, represent the nearest colours and are not exact matches to Colorcoat Prisma®





# Certifications & credentials



## BBA Approved

The Catnic Urban Roofing and Cladding Systems have been independently reviewed and approved by the British Board of Agreement under Certificate 09/4698. This comprises profiled weather protective pre-finished steel panels used in conjunction with a fully supporting continuous layer of OSB/3 or plywood decking for use in residential buildings as a protective/decorative cladding over cold roofs or insulated warm roofs.



## 100% recyclable – cradle to cradle

Catnic always ensures our products meet or exceed the performance regulations of current legislation. As part of Tata Steel UK, we carefully measure the impact of Catnic Urban throughout its life from cradle to cradle.

The steel used in Catnic Urban is 100% recyclable with zero de-gradation in the materials properties when recycled, unlike nearly all other construction materials.



## BES 6001

BES 6001 delivers a method for us to benchmark and show that we are continuously improving our sustainability credentials. We have ensured Catnic Urban standing seam roof and cladding has been certified to BES 6001 so you can rest assured that when specifying and installing this sustainable product you will maximise the potential for obtaining credits under the Responsible Sourcing of Materials sections of BREEAM.

BES 6001 has been published to enable construction product manufacturers to ensure and then prove that their products have been made with constituent materials that have been responsibly sourced. The standard describes a framework for the organisational governance, supply chain management and environmental and social aspects that must be addressed to ensure the responsible sourcing of construction products.

Tata Steel is the first pre-finished steel manufacturer to secure BES 6001 Responsible Sourcing certification. The Colorcoat® manufacturing site has an environmental management system which has been certified to ISO 14001, as well as ISO 50001 Energy Management. For Catnic Urban the focus has been on selecting raw materials with a lower environmental impact than required by current legislation and high-performance alternatives. Both Colorcoat® products are fully REACH compliant and free of chromates including hexavalent chrome.

# Guarantees

## Confidex<sup>®</sup> Guarantee for industrial & commercial buildings



### The most comprehensive guarantee for pre-finished steel products.

The Confidex<sup>®</sup> Guarantee from Tata Steel offers the most comprehensive guarantee for pre-finished steel products. It is available for the weatherside of industrial and commercial buildings using Colorcoat HPS200 Ultra<sup>®</sup> and Colorcoat Prisma<sup>®</sup> for up to 40 years.

Upon online registration it is offered directly to the building owner with no inspection or maintenance to maintain its validity except when Colorcoat HPS200 Ultra<sup>®</sup> and Colorcoat Prisma<sup>®</sup> are used on a roof or wall that has a Photovoltaic (PV) installation.

To demonstrate Tata Steel's commitment to the environment and renewable energy offerings, Colorcoat HPS200 Ultra<sup>®</sup> and Colorcoat Prisma<sup>®</sup> provides the comprehensive Confidex<sup>®</sup> Guarantee for the pre-finished steel that is under clip and fix photovoltaic (PV) frame modules on a roof or wall. This provides the building owner with the confidence that installing a PV array will not have a detrimental effect on the performance of the pre-finished steel, and that all parts of the roof and wall are covered for the same duration of the Confidex<sup>®</sup> Guarantee.



# Guarantees

## Confidex<sup>®</sup> Home Guarantee<sup>\*</sup>



### 25-year performance guarantee

Catnic Urban benefits from the Tata Steel Confidex<sup>®</sup> Home Guarantee. Offered free of charge directly to the homeowner when registered for online, this 25-year performance guarantee for Colorcoat HPS200 Ultra<sup>®</sup> and Colorcoat Prisma<sup>®</sup> is available when used as part of a Catnic Urban standing seam roof or wall cladding system for homes in the UK and Ireland, regardless of environment, location, colour and distance to the coast.

It provides homeowners with the utmost confidence in our Catnic Urban system. Fully and easily transferable in the event the property is sold to new owners, the 25-year guarantee is testament to the performance of the material and our

confidence that it will stand the test of time.

What's more, the Guarantee enables developers to offer added peace of mind to prospective home buyers, with an additional 15 years on top of the 10-year NHBC guarantee.

While, as a result of the Confidex<sup>®</sup> Home Guarantee being a direct agreement with Tata Steel, homeowners can benefit from the assurance that, in the unlikely event of a material fault, it can be promptly resolved and rectified, without the need to go via the supply chain or their home insurance.

\*Confidex<sup>®</sup> Home Guarantee excludes guttering, soffits and fascias.

Please see terms and conditions.



### Catnic SolarSeam

Catnic SolarSeam is covered under the 25-year Confidex<sup>®</sup> Home guarantee. As well as a 10-year solar product guarantee and a 25-year solar performance guarantee, provided by BiPVco (First 20 years – 90% minimum output rating and 20-25 years – 80% minimum output).



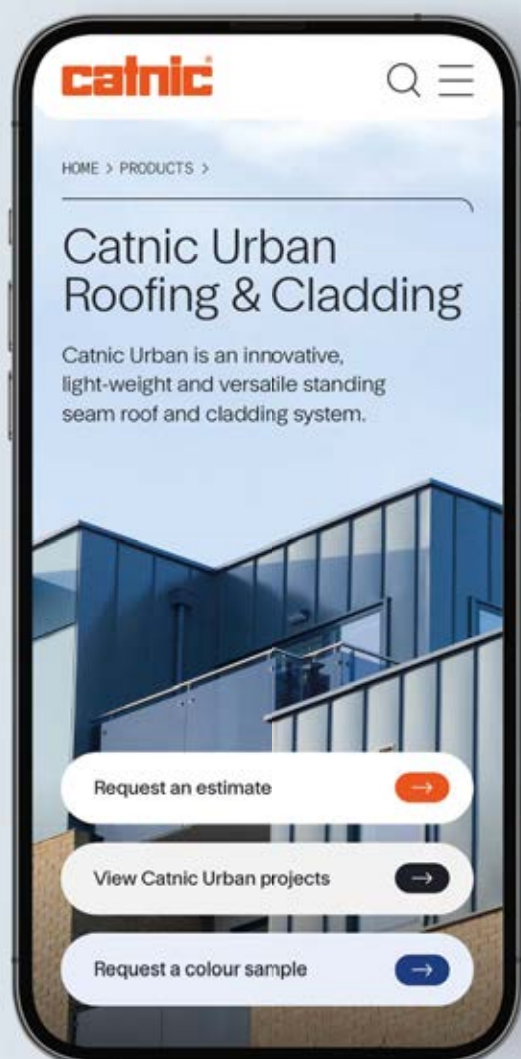
### Register online

Once installed, the homeowner simply needs to register the product directly with Tata Steel so that in the unlikely event of a claim, the process is simple and efficient. The 25-year protection is offered on the core range of colours, and applies when Catnic Urban is used as roofing or cladding, and regardless of where the property is located – including coastal regions.

For further details on the terms and conditions and to register the Confidex<sup>®</sup> Home Guarantee, the homeowner simply has to complete a short online form and within 14 days they will receive a guarantee certificate via email.



# Service & support



## Estimating Service

Catnic Urban offer an online estimating tool, providing a guide price for your project. The estimating tool is available on the Catnic website.

→ [catnic.com](https://catnic.com)



## Scheduling Service

Catnic Urban provides a range of scheduling support, for more comprehensive guidance on scheduling for your project, please contact our team on **01244 892449** or email us at [catnic.urban@tatasteeleurope.com](mailto:catnic.urban@tatasteeleurope.com) to find out more.

## Customer Service

- ✓ Experienced and dedicated team of estimators, schedulers and sales representatives
- ✓ Professional internal customer support team for all your needs; from placing orders, to enquiring about prices or deliveries
- ✓ Comprehensive range of literature and samples available on request
- ✓ Instant access no obligation on-line price estimates via [www.catnic.com](https://www.catnic.com)
- ✓ CAD & BIM details available on-line providing instant access to drawings
- ✓ Technical hotline for all queries and consultation at every stage of your job
- ✓ One day installation training course available every month, visit [catnic.com](https://catnic.com) to register



**catnic.com**

Care has been taken to ensure that the contents of this publication are accurate, but Tata Steel Europe Limited and its subsidiaries, which includes Tata Steel UK Limited, do not accept responsibility or liability for errors or information that is found to be misleading. Suggestions for, or descriptions of, the end use or application of products or methods of working are for information only and Tata Steel Europe Limited and its subsidiaries accept no liability in respect thereof.

Before using products or services supplied or manufactured by Tata Steel Europe Limited and its subsidiaries, customers should satisfy themselves as to their suitability.

Catnic reserves the right to change information contained within this brochure at any time.

© Copyright 2024 Tata Steel UK Limited.

Catnic and SolarSeam are trademarks of Tata Steel Limited.

---

Catnic Urban  
Shotton Steel Works  
Deeside  
Shotton  
CH5 2NH

**01244 892449**  
**catnic.com**

English version 04/2024