

ASPEN Tiehack Large Round Top Drain Gully

Load Class up to FACTA C250



ASPEN Stainless hardworking stainless steel products for hardwearing environments:
British engineered with a lifetime guarantee.

Product Description



The Standard Tiehack Large Drain Gully is the most popular heavy duty unit, which is bead blasted with easy access for Rodding. It has a larger construction and basket capacity compared to the Tiehack HD Gully.

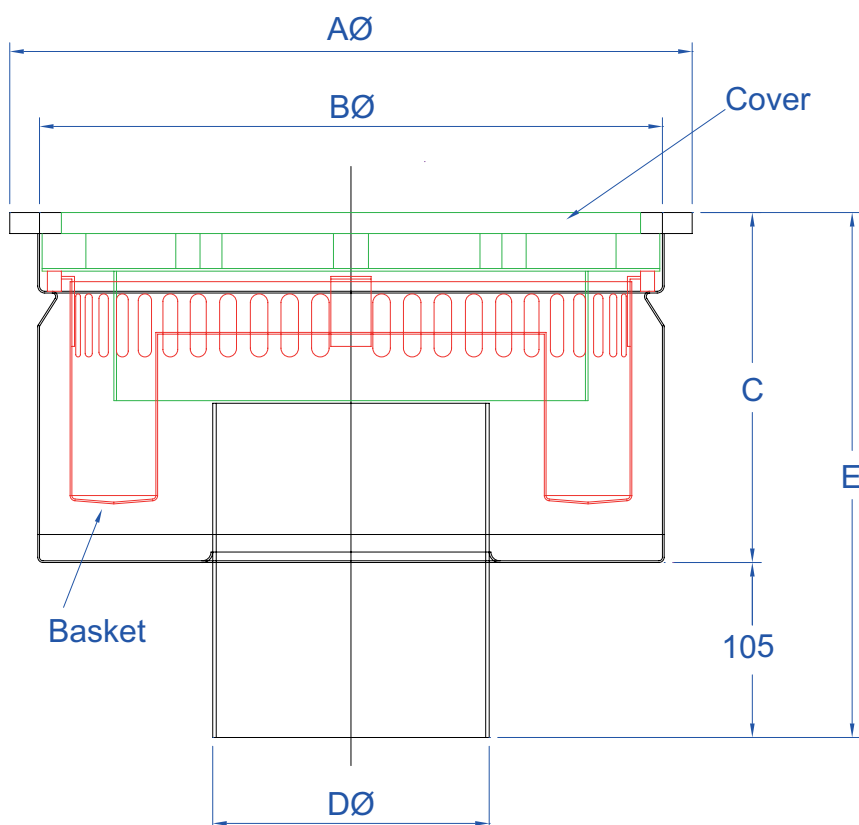
Suitable for hygienic environments accessed by heavy load factory traffic.

This Drain Gully is available in two outlet sizes to accommodate different flow rates.

Technical Specification

- > Body: made from 1.2mm stainless steel.
- > Top: made from 10mm stainless steel.
- > Round top Gully with smooth cover as standard.
- > Grade 304 stainless steel (British Standard 304S31, Euronorm 1.4301)

MODEL	REF	GULLY DIMENSIONS					FLOW RATES	FACTA LOAD CLASS
		A	B	C	D	E		
TIEHACK 110 LARGE	TGR110L	310	281	180	110	285	4.0 Ltr/Sec	
TIEHACK 160 LARGE	TGR160L	405	355	190	160	295	8.0 - 9.0 Ltr/Sec	



All dimensions in mm.



+44 (0)115 986 6321
aspen@canalengineering.co.uk
www.aspen.eu.com

ASPEN Tiehack Large Round Top Drain Gully

Load Class up to FACTA C250



ASPEN Stainless hardworking stainless steel products for hardwearing environments:
British engineered with a lifetime guarantee.

ASPEN Drainage System

As the UK based designer and manufacturer of all ASPEN Stainless, Canal Engineering is able to offer a full range of products to complete your drainage system and can customize any of its Units or manufacture complete bespoke drainage systems.

Key Benefits

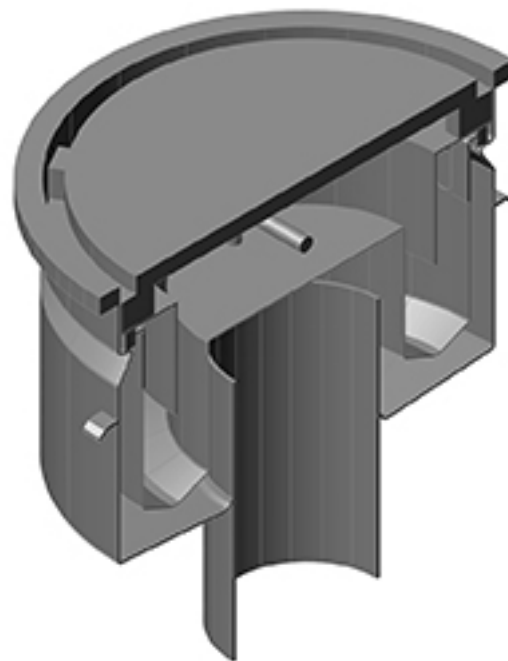
A large, versatile and popular gully for use in any area utilising a solid and well established design to provide maximum drainage and good filtration of solids in heavily trafficked areas.

Maintenance

Stainless steel equipment should be occasionally thoroughly checked for retained deposits and concentrated fluid build up that causes corrosion.

Cleaning

Many factors affect the choice of cleaning method and frequency of its application. Suitable methods for stainless steel are: water and steam; mechanical non abrasive scrubbing; organic solvents and mild detergents.



Tiehack Large Round Top 3D Cut Through Render

ASPEN Drainage Installation

Canal Engineering offer supply only or full installation, with fully welded and polished joints, and commissioning. Canal Engineering also offer on-going annual inspection and maintenance contracts.

For advice regarding the most suitable ASPEN Stainless for you please contact our technical sales team today to discuss your requirements.

ASPEN Drainage Options

- > Available in grade 316 stainless steel (British Standard 316S31, Euronorm 1.4401).
- > A range of Gully Covers.
- > Locking Gully Cover.
- > Gully Membrane Flange.
- > Gully Cover lifting tools.
- > Variable filtration mesh hole size.

ASPEN Tiehack Large Square Top Drain Gully

Load Class up to FACTA C250



ASPEN Stainless hardworking stainless steel products for hardwearing environments:
British engineered with a lifetime guarantee.

Product Description

The Standard Tiehack Large Drain Gully is the most popular heavy duty unit, which is bead blasted with easy access for Rodding. It has a larger construction and basket capacity compared to the Tiehack HD Gully.

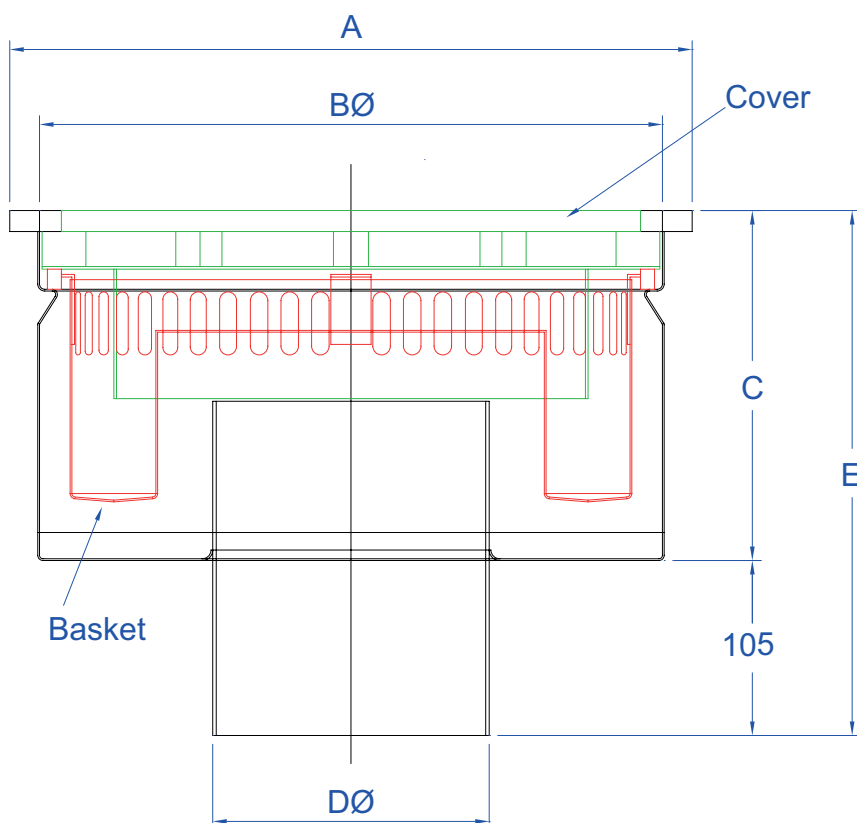
Suitable for hygienic environments accessed by heavy load factory traffic.

This Drain Gully is available in two outlet sizes to accommodate different flow rates.

Technical Specification

- > Body: made from 1.2mm stainless steel.
- > Top: made from 10mm stainless steel.
- > Square top Gully with smooth cover as standard.
- > Grade 304 stainless steel (British Standard 304S31, Euronorm 1.4301)

MODEL	REF	GULLY DIMENSIONS					FLOW RATES	FACTA LOAD CLASS
		A	B	C	D	E		
TIEHACK 110 LARGE	TGS110L	310	281	180	110	285	4.0 Ltr/Sec	
TIEHACK 160 LARGE	TGS160L	405	355	190	160	295	8.0 - 9.0 Ltr/Sec	



All dimensions in mm.



+44 (0)115 986 6321
 aspen@canalengineering.co.uk
 www.aspen.eu.com

ASPEN Tiehack Large Square Top Drain Gully

Load Class up to FACTA C250



ASPEN Stainless hardworking stainless steel products for hardwearing environments:
British engineered with a lifetime guarantee.

ASPEN Drainage System

As the UK based designer and manufacturer of all ASPEN Stainless, Canal Engineering is able to offer a full range of products to complete your drainage system and can customize any of its Units or manufacture complete bespoke drainage systems.

Key Benefits

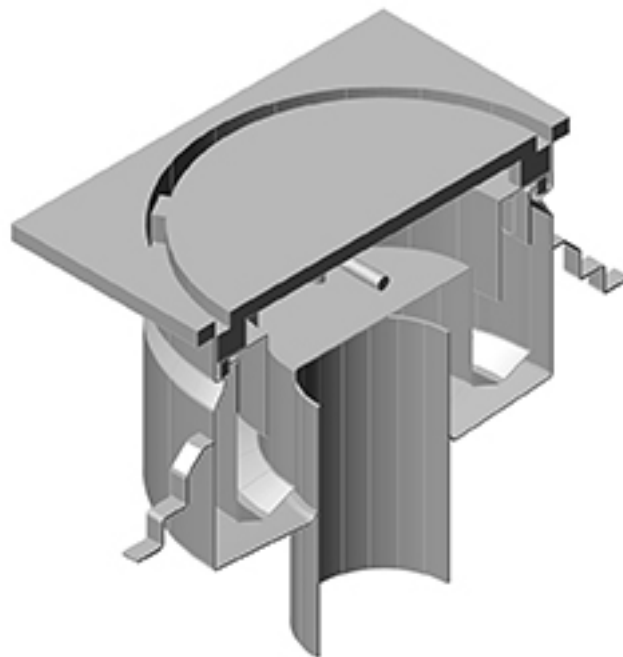
A large, versatile and popular gully for use in any area utilising a solid and well established design to provide maximum drainage and good filtration of solids in heavily trafficked areas.

Maintenance

Stainless steel equipment should be occasionally thoroughly checked for retained deposits and concentrated fluid build up that causes corrosion.

Cleaning

Many factors affect the choice of cleaning method and frequency of its application. Suitable methods for stainless steel are: water and steam; mechanical non abrasive scrubbing; organic solvents and mild detergents.



Tiehack Large Square Top 3D Cut Through Render

ASPEN Drainage Installation

Canal Engineering offer supply only or full installation, with fully welded and polished joints, and commissioning. Canal Engineering also offer on-going annual inspection and maintenance contracts.

For advice regarding the most suitable ASPEN Stainless for you please contact our technical sales team today to discuss your requirements.

ASPEN Drainage Options

- > Available in grade 316 stainless steel (British Standard 316S31, Euronorm 1.4401).
- > A range of Gully Covers.
- > Locking Gully Cover.
- > Gully Membrane Flange.
- > Gully Cover lifting tools.
- > Variable filtration mesh hole size.

ASPEN Round Top Pancake Tiehack Gully

Load Class up to FACTA C250



ASPEN Stainless hardworking stainless steel products for hardwearing environments:
British engineered with a lifetime guarantee.

Product Description


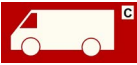
The Standard Pancake Tiehack Gully has a reduced height for shallow inverts, which is bead blasted with easy access for Rodding.

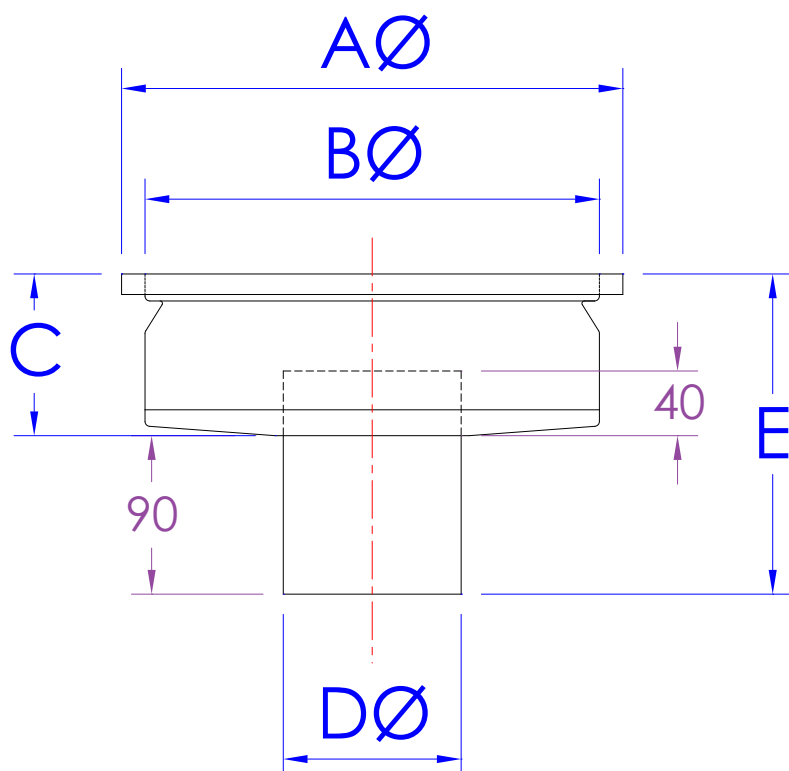
Suitable for hygienic environments accessed by medium load factory traffic.

The Pancake Gully is available in two sizes to accommodate different flow rates.

Technical Specification

- > Body: made from 1.2mm stainless steel.
- > Top: made from 10mm stainless steel.
- > Round top Gully with smooth cover.
- > Minimum 40mm water trap.
- > Grade 304 stainless steel (British Standard 304S31, Euronorm 1.4301)

MODEL	REF	GULLY DIMENSIONS					FLOW RATES	FACTA LOAD CLASS
		A	B	C	D	E		
PANCAKE 110	PGR110	310	281	100	110	190	4.0 - 5.0 Ltr/Sec	
PANCAKE 160	PGR160	310	281	100	160	190	8.0 Ltr/Sec	



The blue measurements indicate the variable dimensions shown in the chart above. All dimensions in mm.



+44 (0)115 986 6321
 aspen@canalengineering.co.uk
 www.aspen.eu.com

ASPEN Round Top Pancake Tiehack Gully

Load Class up to FACTA C250



ASPEN Stainless hardworking stainless steel products for hardwearing environments:
British engineered with a lifetime guarantee.

ASPEN Drainage System

As the UK based designer and manufacturer of all ASPEN Stainless, Canal Engineering is able to offer a full range of products to complete your drainage system and can customize any of its Units or manufacture complete bespoke drainage systems.

Key Benefits

A versatile and popular gully with a smaller body for use in shallow invert positions for use in any area utilising a solid and well established design to provide maximum drainage and good filtration of solids.

Maintenance

Stainless steel equipment should be occasionally thoroughly checked for retained deposits and concentrated fluid build up that causes corrosion.

Cleaning

Many factors affect the choice of cleaning method and frequency of its application. Suitable methods for stainless steel are: water and steam; mechanical non abrasive scrubbing; organic solvents and mild detergents.



Round Top Pancake Tiehack Gully Sample

ASPEN Drainage Installation

Canal Engineering offer supply only or full installation, with fully welded and polished joints, and commissioning. Canal Engineering also offer on-going annual inspection and maintenance contracts.

For advice regarding the most suitable ASPEN Stainless for you please contact our technical sales team today to discuss your requirements.

ASPEN Drainage Options

- > Available in grade 316 stainless steel (British Standard 316S31, Euronorm 1.4401).
- > A range of Gully Covers (see TD35).
- > Locking Gully Cover.
- > Gully Membrane Flange (see TD66).
- > Gully Cover lifting tools.
- > Variable filtration mesh hole size.

ASPEN Square Top Pancake Tiehack Gully

Load Class up to FACTA C250

ASPEN

Stainless

ASPEN Stainless hardworking stainless steel products for hardwearing environments:
British engineered with a lifetime guarantee.

Product Description



The Standard Pancake Tiehack Gully has a reduced height for shallow inverts, which is bead blasted with easy access for Rodding.

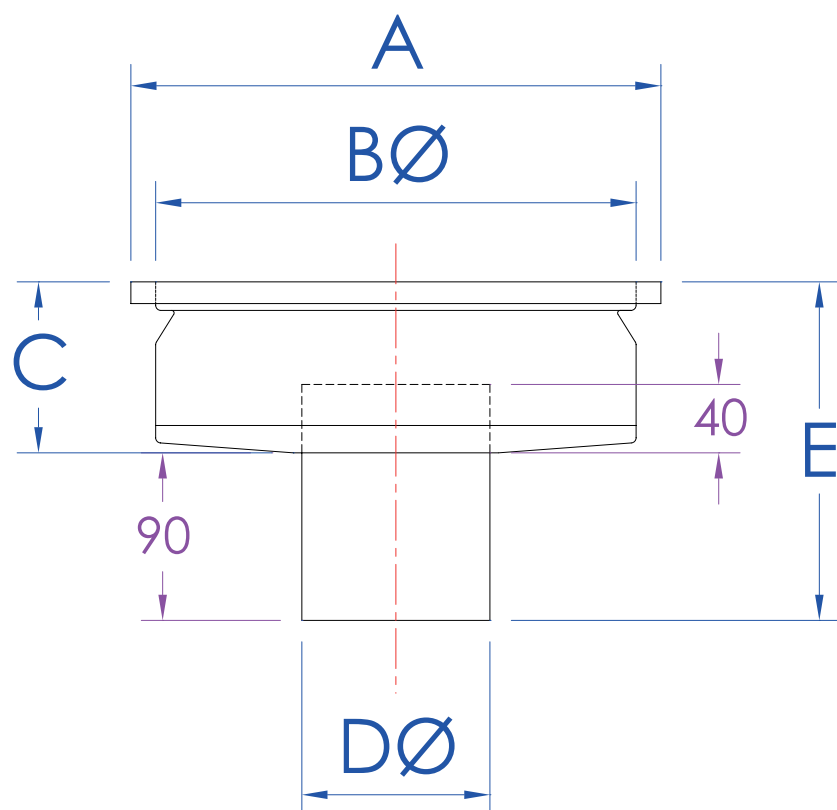
Suitable for hygienic environments accessed by medium load factory traffic.

The Pancake Gully is available in two sizes to accommodate different flow rates.

Technical Specification

- > Body: made from 1.2mm stainless steel.
- > Top: made from 10mm stainless steel.
- > Square top Gully with smooth cover.
- > Minimum 40mm water trap.
- > Grade 304 stainless steel (British Standard 304S31, Euronorm 1.4301)

MODEL	REF	GULLY DIMENSIONS					FLOW RATES	FACTA LOAD CLASS
		A	B	C	D	E		
PANCAKE 110	PGS110	310	281	100	110	190	4.0 - 5.0 Ltr/Sec	
PANCAKE 160	PGS160	310	281	100	160	190	8.0 Ltr/Sec	



The blue measurements indicate the variable dimensions shown in the chart above. All dimensions in mm.



+44 (0)115 986 6321
 aspen@canalengineering.co.uk
 www.aspen.eu.com

ASPEN Square Top Pancake Tiehack Gully

Load Class up to FACTA C250



ASPEN Stainless hardworking stainless steel products for hardwearing environments:
British engineered with a lifetime guarantee.

ASPEN Drainage System

As the UK based designer and manufacturer of all ASPEN Stainless, Canal Engineering is able to offer a full range of products to complete your drainage system and can customize any of its Units or manufacture complete bespoke drainage systems.

Key Benefits

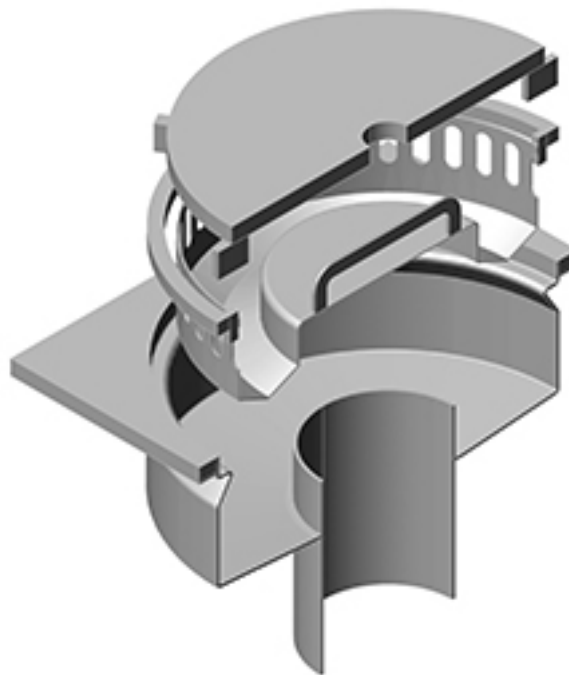
A versatile and popular gully with a smaller body for use in shallow invert positions for use in any area utilising a solid and well established design to provide maximum drainage and good filtration of solids.

Maintenance

Stainless steel equipment should be occasionally thoroughly checked for retained deposits and concentrated fluid build up that causes corrosion.

Cleaning

Many factors affect the choice of cleaning method and frequency of its application. Suitable methods for stainless steel are: water and steam; mechanical non abrasive scrubbing; organic solvents and mild detergents.



Square Top Pancake Tiehack Gully Sample

ASPEN Drainage Installation

Canal Engineering offer supply only or full installation, with fully welded and polished joints, and commissioning. Canal Engineering also offer on-going annual inspection and maintenance contracts.

For advice regarding the most suitable ASPEN Stainless for you please contact our technical sales team today to discuss your requirements.

ASPEN Drainage Options

- > Available in grade 316 stainless steel (British Standard 316S31, Euronorm 1.4401).
- > A range of Gully Covers (see TD35).
- > Locking Gully Cover.
- > Gully Membrane Flange (see TD66).
- > Gully Cover lifting tools.
- > Variable filtration mesh hole size.

ASPEN Round Top Side Outlet Tiehack Gully

Load Class up to FACTA C250



ASPEN Stainless hardworking stainless steel products for hardwearing environments:
British engineered with a lifetime guarantee.

Product Description


The Standard Side Outlet Tiehack Gully is bead blasted with easy access for Rodding.

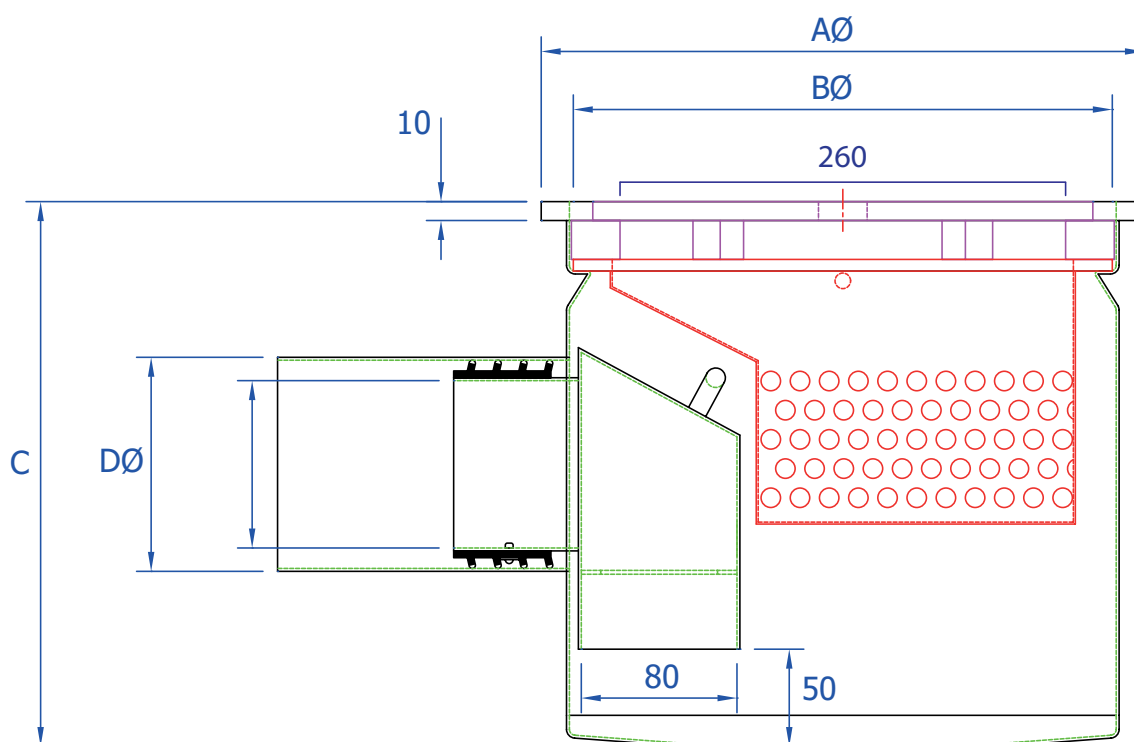
Suitable for hygienic environments accessed by medium load factory traffic.

The Side Outlet Tiehack Gully is available in two sizes to accommodate different flow rates.

Technical Specification

- > Body: made from 1.2mm stainless steel.
- > Top: made from 10mm stainless steel.
- > Round top Gully with smooth cover.
- > 50mm water trap.
- > Trash basket with 6mm holes.
- > Grade 304 stainless steel (British Standard 304S31, Euronorm 1.4301).

MODEL	REF	GULLY DIMENSIONS				FLOW RATES	FACTA LOAD CLASS
		A	B	C	D		
SIDE 110	TGSOR110	331	281	280	110	4.0 - 5.0 Ltr/Sec	



All dimensions in mm.



+44 (0) 115 986 6321
aspeng@canalengineering.co.uk
www.aspen.eu.com

ASPEN Round Top Side Outlet Tiehack Gully

Load Class up to FACTA C250



ASPEN Stainless hardworking stainless steel products for hardwearing environments:
British engineered with a lifetime guarantee.

ASPEN Drainage System

As the UK based designer and manufacturer of all ASPEN Stainless, Canal Engineering is able to offer a full range of products to complete your drainage system and can customize any of its Units or manufacture complete bespoke drainage systems.

Key Benefits

A versatile and popular gully for use in any area utilising a solid and well established design to provide maximum drainage and good filtration of solids.

The side outlet provides a simple connection in low invert environments.

Maintenance

Stainless steel equipment should be occasionally thoroughly checked for retained deposits and concentrated fluid build up that causes corrosion.

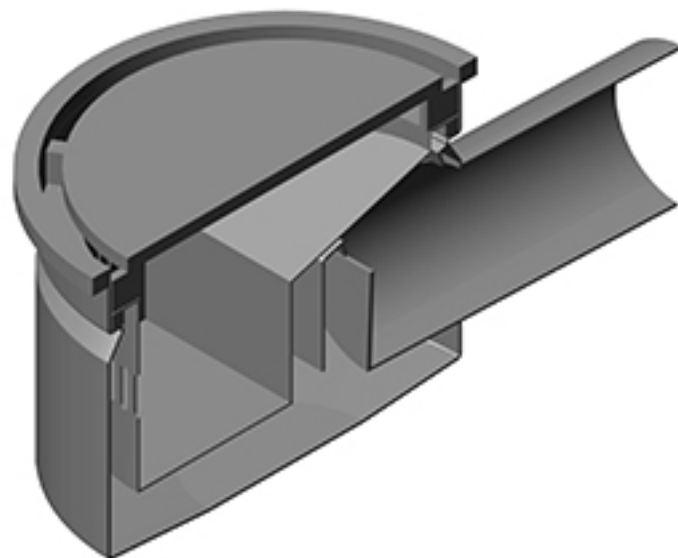
Cleaning

Many factors affect the choice of cleaning method and frequency of its application. Suitable methods for stainless steel are: water and steam; mechanical non abrasive scrubbing; organic solvents and mild detergents.

ASPEN Drainage Installation

Canal Engineering offer supply only or full installation, with fully welded and polished joints, and commissioning. Canal Engineering also offer on-going annual inspection and maintenance contracts.

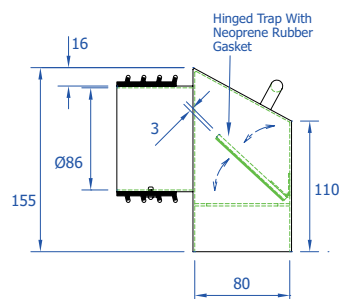
For advice regarding the most suitable ASPEN Stainless for you please contact our technical sales team today to discuss your requirements.



Round Top Side Outlet Tiehack Gully Sample

ASPEN Drainage Options

- > Available in grade 316 stainless steel (British Standard 316S31, Euronorm 1.4401).
- > A range of Gully Covers (see TD35).
- > Locking Gully Cover.
- > Gully Membrane Flange Disc (see TD66).
- > Gully Cover lifting tools.
- > Variable filtration mesh hole size.
- > Condense Pipe.
- > Anti Backflow Mushroom Gully Trap (see below).



Anti Backflow Mushroom Gully Trap Drawing.

ASPEN Square Top Side Outlet Tiehack Gully

Load Class up to FACTA C250



ASPEN Stainless hardworking stainless steel products for hardwearing environments:
British engineered with a lifetime guarantee.

Product Description

The Standard Side Outlet Tiehack Gully is bead blasted with easy access for Rodding.

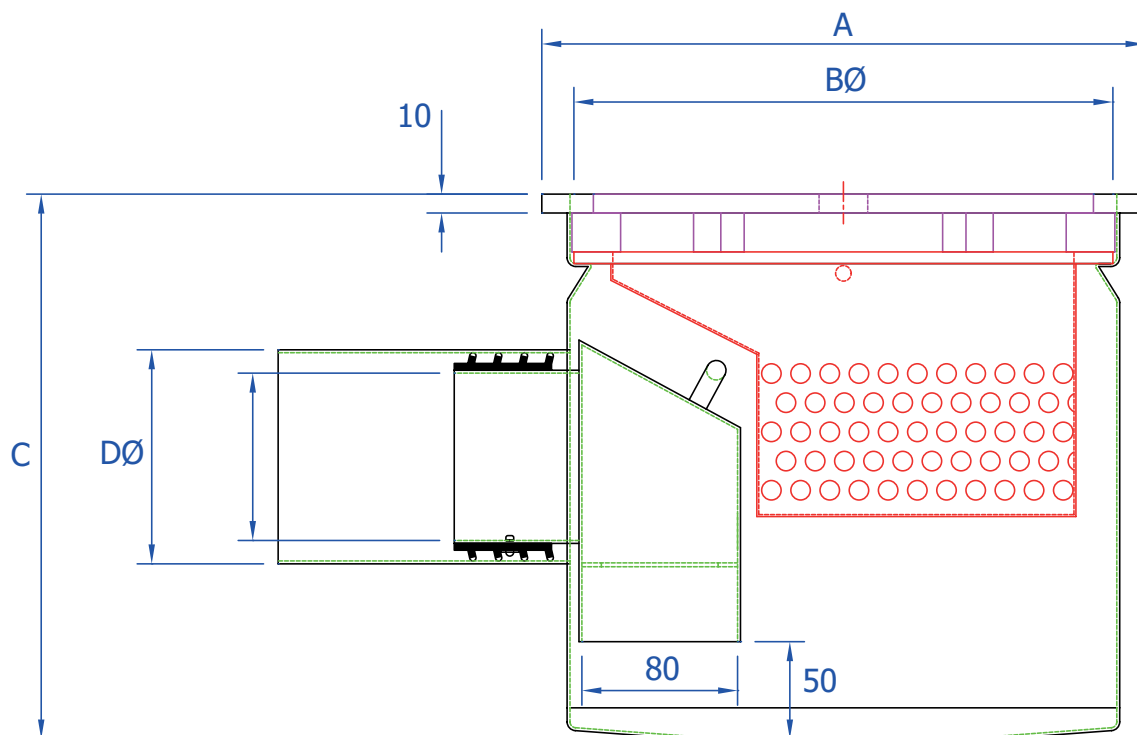
Suitable for hygienic environments accessed by medium load factory traffic.

The Side Outlet Tiehack Gully is available in two sizes to accommodate different flow rates.

Technical Specification

- > Body: made from 1.2mm stainless steel.
- > Top: made from 10mm stainless steel.
- > Square top Gully with smooth cover.
- > 50mm water trap.
- > Trash basket with 6mm holes.
- > Grade 304 stainless steel (British Standard 304S31, Euronorm 1.4301).

MODEL	REF	GULLY DIMENSIONS				FLOW RATES	FACTA LOAD CLASS
		A	B	C	D		
SIDE 110	TGSOS110	310	281	210	110	4.0 - 5.0 Ltr/Sec	
SIDE 160	TGSOS160	310	281	210	160	7.0 - 8.0 Ltr/Sec	



All dimensions in mm.



+44 (0) 115 986 6321
 aspen@canalengineering.co.uk
 www.aspen.eu.com

ASPEN Square Top Side Outlet Tiehack Gully

Load Class up to FACTA C250



ASPEN Stainless hardworking stainless steel products for hardwearing environments:
British engineered with a lifetime guarantee.

ASPEN Drainage System

As the UK based designer and manufacturer of all ASPEN Stainless, Canal Engineering is able to offer a full range of products to complete your drainage system and can customize any of its Units or manufacture complete bespoke drainage systems.

Key Benefits

A versatile and popular gully for use in any area utilising a solid and well established design to provide maximum drainage and good filtration of solids.

The side outlet provides a simple connection in low invert environments.

Maintenance

Stainless steel equipment should be occasionally thoroughly checked for retained deposits and concentrated fluid build up that causes corrosion.

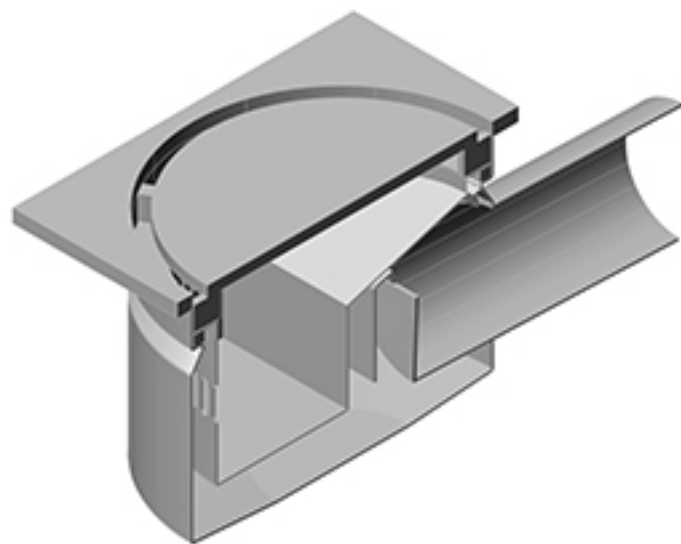
Cleaning

Many factors affect the choice of cleaning method and frequency of its application. Suitable methods for stainless steel are: water and steam; mechanical non abrasive scrubbing; organic solvents and mild detergents.

ASPEN Drainage Installation

Canal Engineering offer supply only or full installation, with fully welded and polished joints, and commissioning. Canal Engineering also offer on-going annual inspection and maintenance contracts.

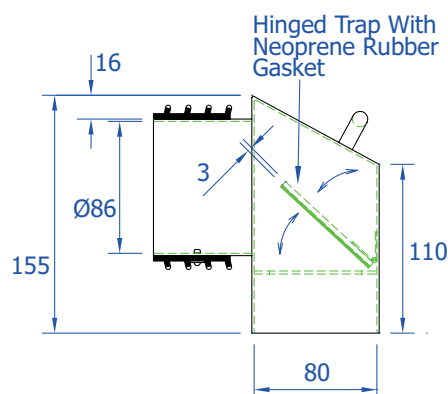
For advice regarding the most suitable ASPEN Stainless for you please contact our technical sales team today to discuss your requirements.



Square Top Side Outlet Tiehack Gully Sample

ASPEN Drainage Options

- > Available in grade 316 stainless steel (British Standard 316S31, Euronorm 1.4401).
- > A range of Gully Covers (see TD35).
- > Locking Gully Cover.
- > Gully Membrane Flange Disc (see TD66).
- > Gully Cover lifting tools.
- > Variable filtration mesh hole size.
- > Condense Pipe.
- > Anti Backflow Mushroom Gully Trap (see below).



Anti Backflow Mushroom Gully Trap Drawing.

ASPEN Round Top Anti Backflow Tiehack Gully

Load Class up to FACTA C250

ASPEN

Stainless

ASPEN Stainless hardworking stainless steel products for hardwearing environments:
British engineered with a lifetime guarantee.

Product Description



The Standard Anti Backflow Tiehack Gully is designed to close off the outlet if a drain should block to prevent foul water and debris returning into the gully or room. The Gully is bead blasted with easy access for Rodding.

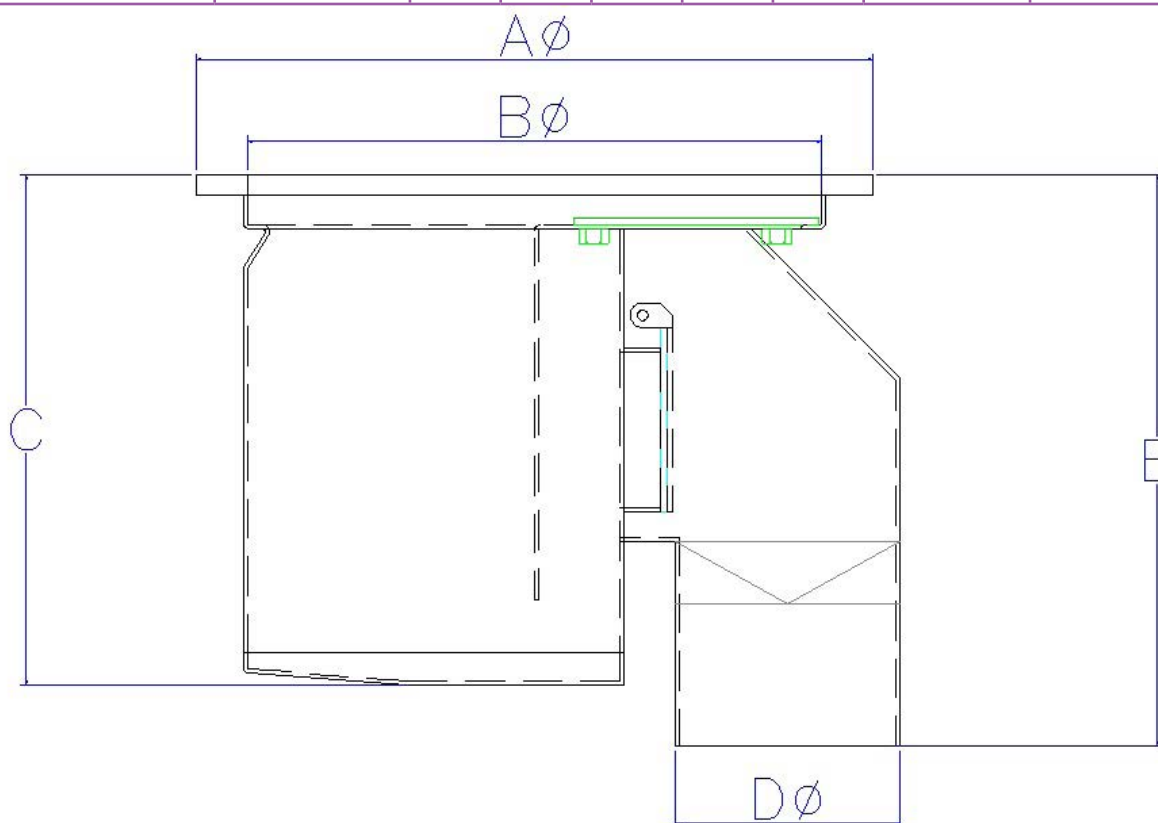
Suitable for hygienic environments accessed by medium load factory traffic.

The Anti Backflow Tiehack Gully is available in two sizes to accommodate different flow rates.

Technical Specification

- > Stainless steel of various thicknesses.
- > Bottom Outlet
- > Round top with smooth cover.
- > Grade 304 stainless steel (British Standard 304S31, Euronorm 1.4301).

MODEL	REF	GULLY DIMENSIONS					FLOW RATES	FACTA LOAD CLASS
		A	B	C	D	E		
ANTI BACKFLOW 110	TGABR110	170	280	250	110	280	4.0 Ltr/Sec	
ANTI BACKFLOW 160	TGABR160	481	409	250	160	339	9.0 Ltr/Sec	



The blue measurements indicate the variable dimensions shown in the chart above. All dimensions in mm.

ASPEN Round Top Anti Backflow Tiehack Gully

Load Class up to FACTA C250



ASPEN Stainless hardworking stainless steel products for hardwearing environments:
British engineered with a lifetime guarantee.

ASPEN Drainage System

As the UK based designer and manufacturer of all ASPEN Stainless, Canal Engineering is able to offer a full range of products to complete your drainage system and can customize any of its Units or manufacture complete bespoke drainage systems.

Key Benefits

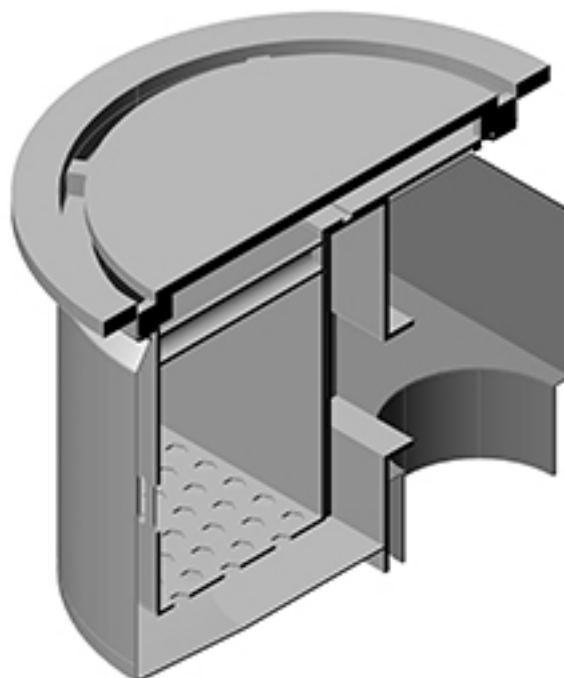
The Gully is designed to eliminate the backflow of foul water and debris into the Gully or room.

Maintenance

Stainless steel equipment should be occasionally thoroughly checked for retained deposits and concentrated fluid build up that causes corrosion.

Cleaning

Many factors affect the choice of cleaning method and frequency of its application. Suitable methods for stainless steel are: water and steam; mechanical non abrasive scrubbing; organic solvents and mild detergents.



Round Top Anti Backflow Tiehack Gully Sample

ASPEN Drainage Installation

Canal Engineering offer supply only or full installation, with fully welded and polished joints, and commissioning. Canal Engineering also offer on-going annual inspection and maintenance contracts.

For advice regarding the most suitable ASPEN Stainless for you please contact our technical sales team today to discuss your requirements.

ASPEN Drainage Options

- > Available in grade 316 stainless steel (British Standard 316S31, Euronorm 1.4401).
- > A range of Gully Covers (see TD35).
- > Locking Gully Cover.
- > Gully Membrane Flange Disc (see TD66).
- > Gully Cover lifting tools.
- > Variable filtration mesh hole size.
- > Available with a side outlet.

ASPEN Square Top Anti Backflow Tiehack Gully

Load Class up to FACTA C250

ASPEN

Stainless

ASPEN Stainless hardworking stainless steel products for hardwearing environments:
British engineered with a lifetime guarantee.

Product Description



The Standard Anti Backflow Tiehack Gully is designed to close off the outlet if a drain should block to prevent foul water and debris returning into the gully or room. The Gully is bead blasted with easy access for Rodding.

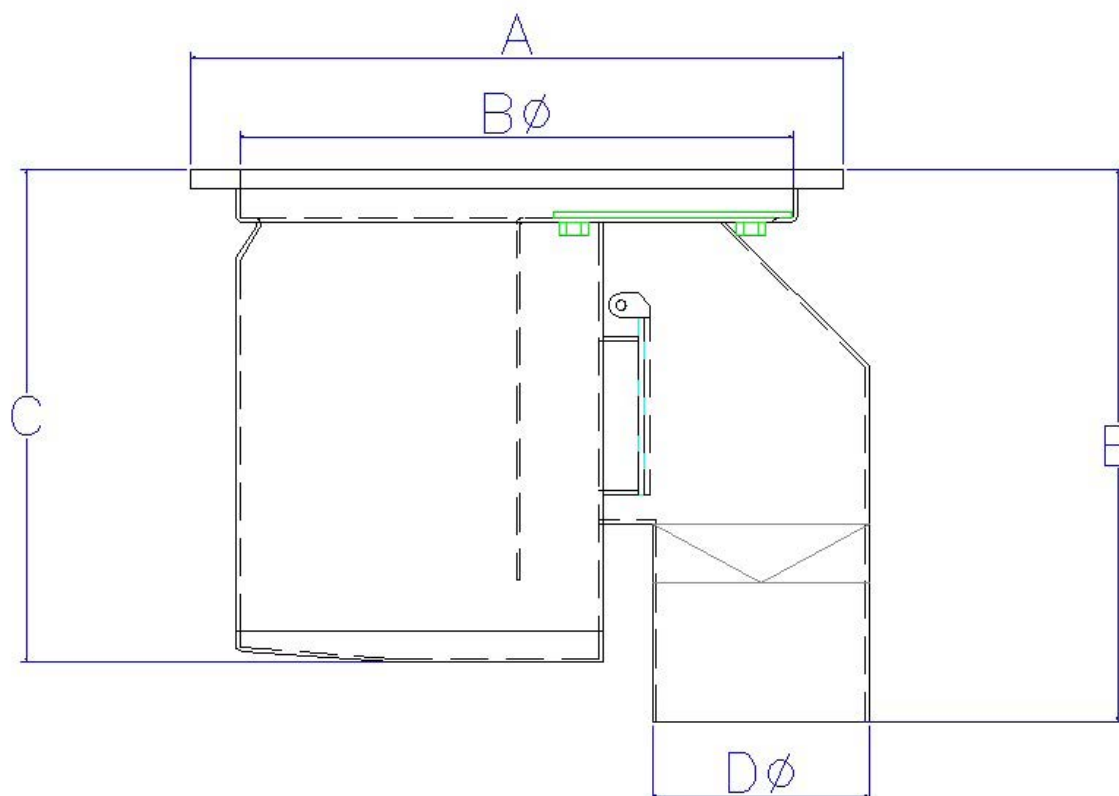
Suitable for hygienic environments accessed by medium load factory traffic.

The Anti Backflow Tiehack Gully is available in two sizes to accommodate different flow rates.

Technical Specification

- > Stainless steel of various thicknesses.
- > Bottom Outlet
- > Square top with smooth cover.
- > Grade 304 stainless steel (British Standard 304S31, Euronorm 1.4301).

MODEL	REF	GULLY DIMENSIONS					FLOW RATES	FACTA LOAD CLASS
		A	B	C	D	E		
ANTI BACKFLOW 110	TGABS110	170	280	250	110	280	4.0 Ltr/Sec	
ANTI BACKFLOW 160	TGABS160	481	409	250	160	339	9.0 Ltr/Sec	



The blue measurements indicate the variable dimensions shown in the chart above. All dimensions in mm.



+44 (0)115 986 6321
 aspen@canalengineering.co.uk
 www.aspen.eu.com

ASPEN Square Top Anti Backflow Tiehack Gully

Load Class up to FACTA C250



ASPEN Stainless hardworking stainless steel products for hardwearing environments:
British engineered with a lifetime guarantee.

ASPEN Drainage System

As the UK based designer and manufacturer of all ASPEN Stainless, Canal Engineering is able to offer a full range of products to complete your drainage system and can customize any of its Units or manufacture complete bespoke drainage systems.

Key Benefits

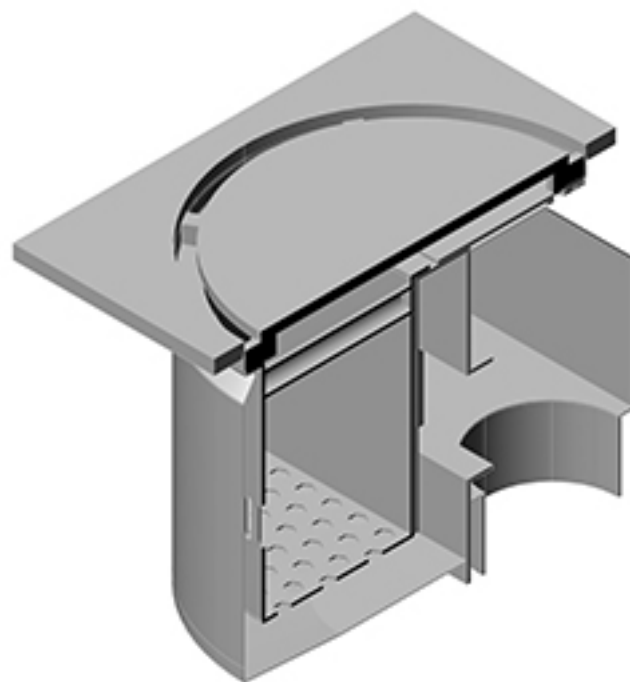
The Gully is designed to eliminate the backflow of foul water and debris into the Gully or room.

Maintenance

Stainless steel equipment should be occasionally thoroughly checked for retained deposits and concentrated fluid build up that causes corrosion.

Cleaning

Many factors affect the choice of cleaning method and frequency of its application. Suitable methods for stainless steel are: water and steam; mechanical non abrasive scrubbing; organic solvents and mild detergents.



Square Top Anti Backflow Tiehack Gully Sample

ASPEN Drainage Installation

Canal Engineering offer supply only or full installation, with fully welded and polished joints, and commissioning. Canal Engineering also offer on-going annual inspection and maintenance contracts.

For advice regarding the most suitable ASPEN Stainless for you please contact our technical sales team today to discuss your requirements.

ASPEN Drainage Options

- > Available in grade 316 stainless steel (British Standard 316S31, Euronorm 1.4401).
- > A range of Gully Covers (see TD35).
- > Locking Gully Cover.
- > Gully Membrane Flange Disc (see TD66).
- > Gully Cover lifting tools.
- > Variable filtration mesh hole size.
- > Available with a side outlet.

ASPEN Round Top Summit Gully

Load Class up to FACTA C250



Stainless

ASPEN Stainless hardworking stainless steel products for hardwearing environments:
British engineered with a lifetime guarantee.

Product Description




The Standard Summit Gully is a general purpose Gully designed for use in most areas, which is bead blasted with easy access for Rodding.

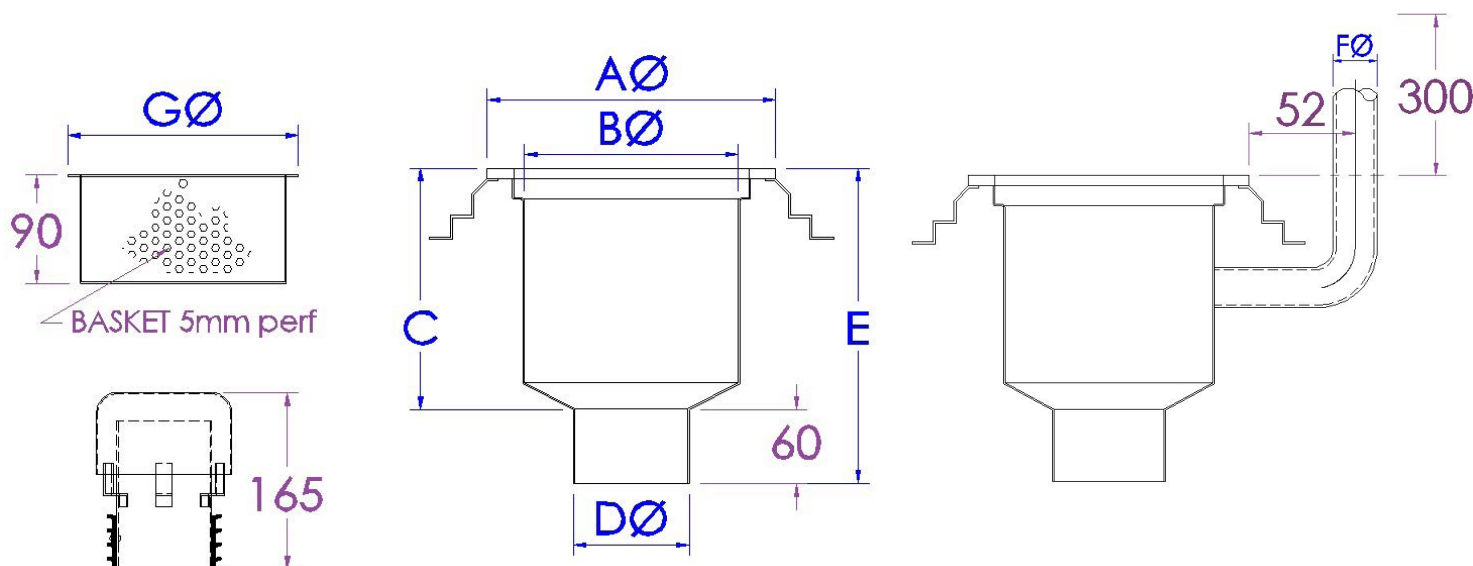
Suitable for hygienic environments accessed by medium load factory traffic.

The Summit Gully is available in two sizes to accommodate different flow rates.

Technical Specification

- > Stainless steel of various thicknesses.
- > 50mm water trap.
- > Round opening with smooth cover.
- > Grade 304 stainless steel (British Standard 304S31, Euronorm 1.4301).

MODEL	REF	GULLY DIMENSIONS							FLOW RATES	FACTA LOAD CLASS
		A	B	C	D	E	Fø	G		
SUMMIT 110	SGR110	270	200	235	110	295	NA	218	3.0 Ltr/Sec	
SUMMIT & CON 110	SGR110C	270	200	235	110	295	38/42/50	218	3.0 Ltr/Sec	
SUMMIT 160	SGR160	317	250	280	160	368	NA	265	6.0 - 7.0 Ltr/Sec	



The blue measurements indicate the variable dimensions shown in the chart above. All dimensions in mm.



+44 (0)115 986 6321
 aspen@canalengineering.co.uk
 www.aspen.eu.com

ASPEN Round Top Summit Gully

Load Class up to FACTA C250



ASPEN Stainless hardworking stainless steel products for hardwearing environments:
British engineered with a lifetime guarantee.

ASPEN Drainage System

As the UK based designer and manufacturer of all ASPEN Stainless, Canal Engineering is able to offer a full range of products to complete your drainage system and can customize any of its Units or manufacture complete bespoke drainage systems.

Key Benefits

The Summit Gully is manufactured with a drainable 50mm water trap and removable trash basket.

Maintenance

Stainless steel equipment should be occasionally thoroughly checked for retained deposits and concentrated fluid build up that causes corrosion.

Cleaning

Many factors affect the choice of cleaning method and frequency of its application. Suitable methods for stainless steel are: water and steam; mechanical non abrasive scrubbing; organic solvents and mild detergents.

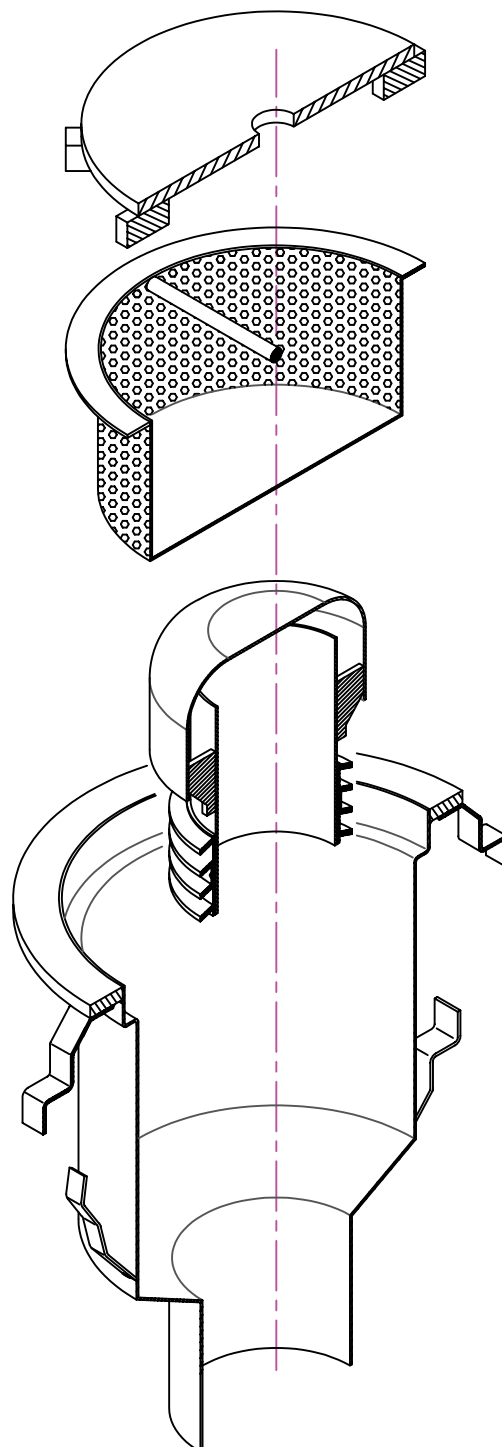
ASPEN Drainage Installation

Canal Engineering offer supply only or full installation, with fully welded and polished joints, and commissioning. Canal Engineering also offer on-going annual inspection and maintenance contracts.

For advice regarding the most suitable ASPEN Stainless for you please contact our technical sales team today to discuss your requirements.

ASPEN Drainage Options

- > Available in grade 316 stainless steel (British Standard 316S31, Euronorm 1.4401).
- > A range of Gully Covers (see TD35).
- > Gully Membrane Flange (see TD66).
- > Gully Basket.
- > Condense.
- > Locking Gully Cover.
- > Gully Cover lifting tools.
- > Variable filtration mesh hole size.



ASPEN Square Top Summit Gully

Load Class up to FACTA C250



Stainless

ASPEN Stainless hardworking stainless steel products for hardwearing environments:

British engineered with a lifetime guarantee.

Product Description




The Standard Summit Gully is a general purpose Gully designed for use in most areas, which is bead blasted with easy access for Rodding.

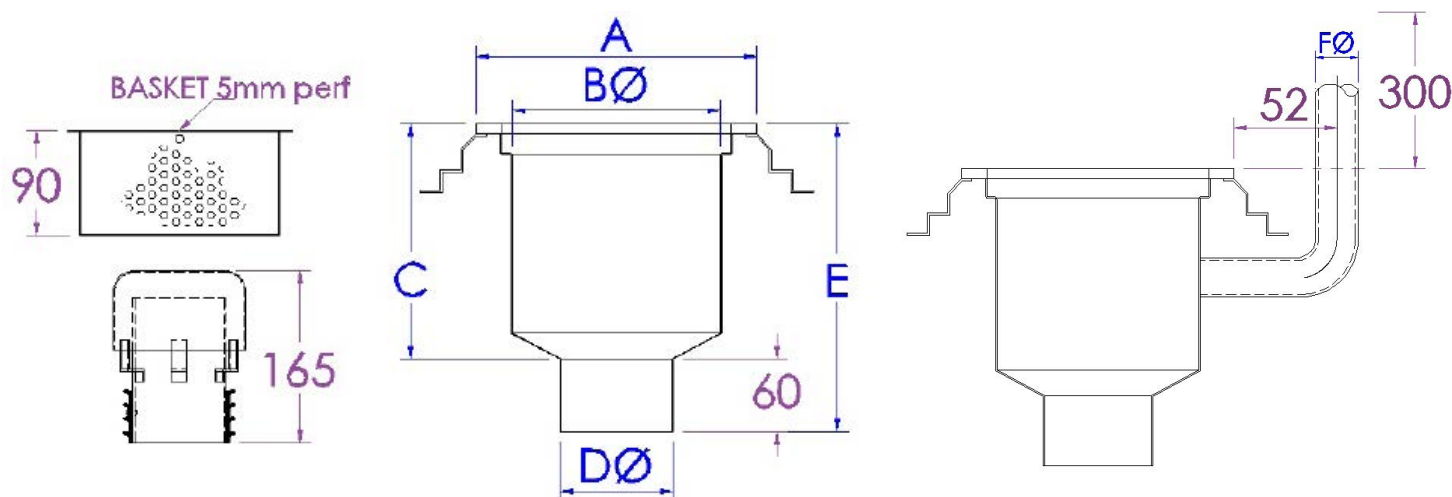
Suitable for hygienic environments accessed by medium load factory traffic.

The Summit Gully is available in two sizes to accommodate different flow rates.

Technical Specification

- > Stainless steel of various thicknesses.
- > 50mm water trap.
- > Square opening with smooth cover.
- > Grade 304 stainless steel (British Standard 304S31, Euronorm 1.4301).

MODEL	REF	GULLY DIMENSIONS							FLOW RATES	FACTA LOAD CLASS
		A	B	C	D	E	Fø	G		
SUMMIT 110	SGS110	270	200	235	110	295	NA	218	3.0 Ltr/Sec	
SUMMIT & CON 110	SGS110C	270	200	235	110	295	38/42/50	218	3.0 Ltr/Sec	
SUMMIT 160	SGS160	317	250	280	160	368	NA	265	6.0 - 7.0 Ltr/Sec	



The blue measurements indicate the variable dimensions shown in the chart above. All dimensions in mm.



+44 (0)115 986 6321
 aspen@canalengineering.co.uk
 www.aspen.eu.com

ASPEN Square Top Summit Gully

Load Class up to FACTA C250



ASPEN Stainless hardworking stainless steel products for hardwearing environments:
British engineered with a lifetime guarantee.

ASPEN Drainage System

As the UK based designer and manufacturer of all ASPEN Stainless, Canal Engineering is able to offer a full range of products to complete your drainage system and can customize any of its Units or manufacture complete bespoke drainage systems.

Key Benefits

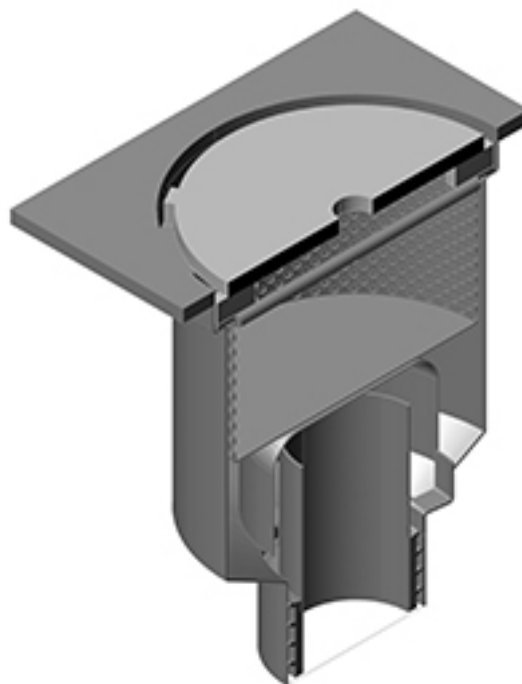
The Summit Gully is manufactured with a drainable 50mm water trap and removable trash basket.

Maintenance

Stainless steel equipment should be occasionally thoroughly checked for retained deposits and concentrated fluid build up that causes corrosion.

Cleaning

Many factors affect the choice of cleaning method and frequency of its application. Suitable methods for stainless steel are: water and steam; mechanical non abrasive scrubbing; organic solvents and mild detergents.



Square Top Summit Gully Sample

ASPEN Drainage Installation

Canal Engineering offer supply only or full installation, with fully welded and polished joints, and commissioning. Canal Engineering also offer on-going annual inspection and maintenance contracts.

For advice regarding the most suitable ASPEN Stainless for you please contact our technical sales team today to discuss your requirements.

ASPEN Drainage Options

- > Available in grade 316 stainless steel (British Standard 316S31, Euronorm 1.4401).
- > A range of Gully Covers (see TD35).
- > Gully Membrane Flange (see TD66).
- > Gully Basket.
- > Condense.
- > Locking Gully Cover.
- > Gully Cover lifting tools.
- > Variable filtration mesh hole size.

ASPEN Round Top Side Outlet Summit Gully

Load Class up to FACTA C250



ASPEN Stainless hardworking stainless steel products for hardwearing environments:
British engineered with a lifetime guarantee.

Product Description




The Standard Side Outlet Summit Gully is a general purpose Gully designed for use in most areas, which is bead blasted with easy access for Rodding.

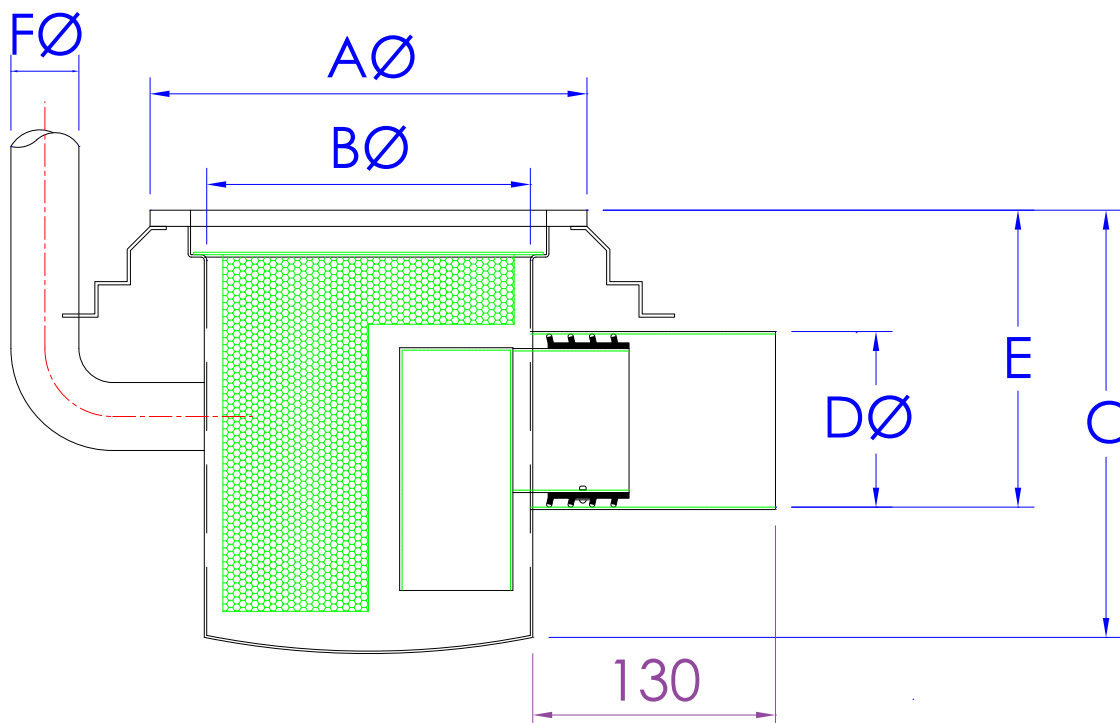
Suitable for hygienic environments accessed by medium load factory traffic.

The Side Outlet Summit Gully is available in two sizes to accommodate different flow rates.

Technical Specification

- > Stainless steel of various thicknesses.
- > 50mm water trap.
- > Round opening with smooth cover.
- > Grade 304 stainless steel (British Standard 304S31, Euronorm 1.4301).

MODEL	REF	GULLY DIMENSIONS						FLOW RATES	FACTA LOAD CLASS
		A	B	C	D	E	Fø		
SUMMIT 110	SGSOR110	270	200	280	110	185	NA	3.0 Ltr/Sec	
SUMMIT & CON 110	SGSOR110C	270	200	280	110	185	38/42	3.0 Ltr/Sec	
SUMMIT 160	SGSOR160	317	250	330	160	244	NA	6.0 - 7.0 Ltr/Sec	



The blue measurements indicate the variable dimensions shown in the chart above. All dimensions in mm.



+44 (0) 115 986 6321
aspen@canalengineering.co.uk
www.aspen.eu.com

ASPEN Round Top Side Outlet Summit Gully

Load Class up to FACTA C250



ASPEN Stainless hardworking stainless steel products for hardwearing environments:
British engineered with a lifetime guarantee.

ASPEN Drainage System

As the UK based designer and manufacturer of all ASPEN Stainless, Canal Engineering is able to offer a full range of products to complete your drainage system and can customize any of its Units or manufacture complete bespoke drainage systems.

Key Benefits

The Summit Gully is manufactured with a drainable 50mm water trap and removable trash basket.

Maintenance

Stainless steel equipment should be occasionally thoroughly checked for retained deposits and concentrated fluid build up that causes corrosion.

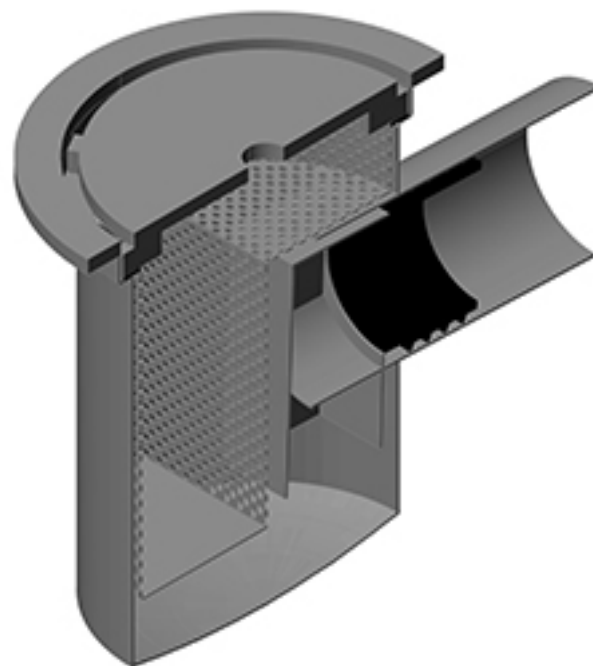
Cleaning

Many factors affect the choice of cleaning method and frequency of its application. Suitable methods for stainless steel are: water and steam; mechanical non abrasive scrubbing; organic solvents and mild detergents.

ASPEN Drainage Installation

Canal Engineering offer supply only or full installation, with fully welded and polished joints, and commissioning. Canal Engineering also offer on-going annual inspection and maintenance contracts.

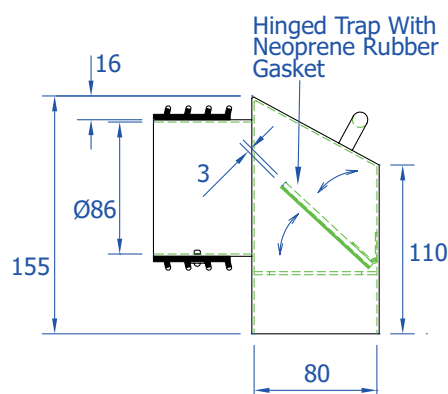
For advice regarding the most suitable ASPEN Stainless for you please contact our technical sales team today to discuss your requirements.



Round Top Side Outlet Summit Gully Sample

ASPEN Drainage Options

- > Available in grade 316 stainless steel (British Standard 316S31, Euronorm 1.4401).
- > A range of Gully Covers (see TD35).
- > Locking Gully Cover.
- > Gully Membrane Flange Disc (see TD66).
- > Gully Cover lifting tools.
- > Variable filtration mesh hole size.
- > Back inlet pipe available in three different sizes.
- > Anti Backflow Mushroom Gully Trap (see below).



Anti Backflow Mushroom Gully Trap Drawing.

ASPEN Side Outlet Delta Gully

Load Class up to FACTA B125



ASPEN Stainless hardworking stainless steel products for hardwearing environments:
British engineered with a lifetime guarantee.

Product Description



The Standard Side Outlet Delta Gully is generally used against walls for collecting sink and condense waste, which has a bead blasted finish with easy access for Rodding.

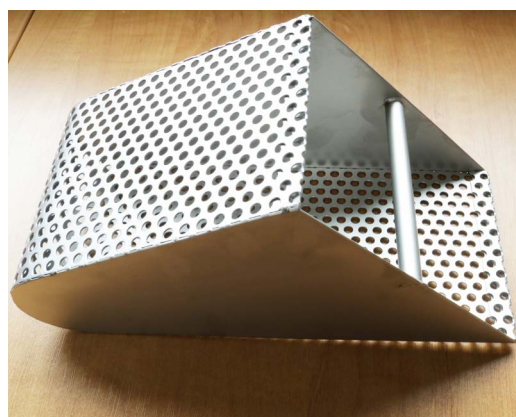
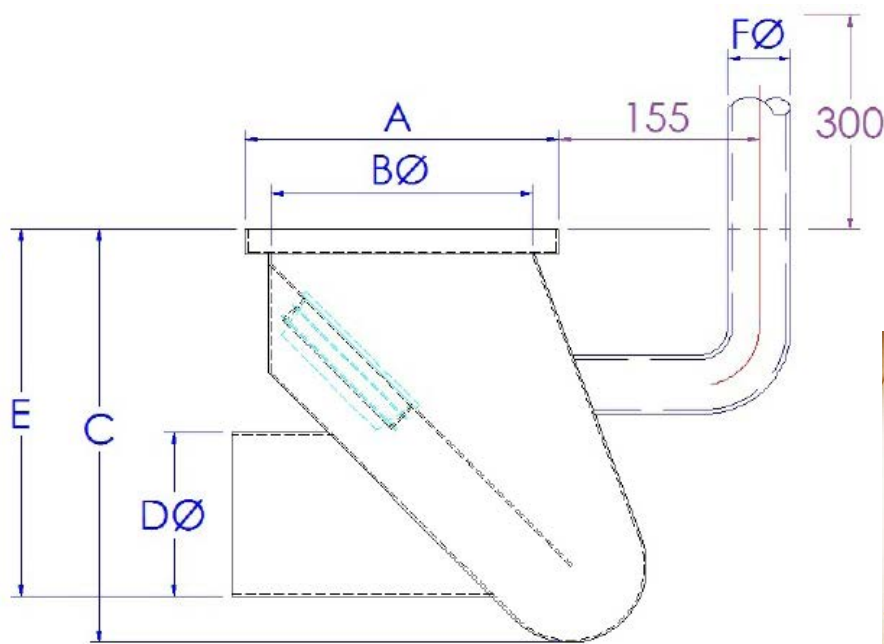
Suitable for hygienic environments accessed by light load factory traffic.

The Side Outlet Delta Gully is available in two sizes to accommodate different flow rates.

Technical Specification

- > Stainless steel plate in 1.5mm and 2mm.
- > 50mm water trap.
- > Square top Gully with slotted cover.
- > Grade 304 stainless steel (British Standard 304S31, Euronorm 1.4301)

MODEL	REF	GULLY DIMENSIONS						FLOW RATES	FACTA LOAD CLASS
		A	B	C	D	E	Fø		
DELTA 110	DGSO110	210	172	276	110	217	NA	3.0 Ltr/Sec	
DELTA & CON 110	DGSO110C	210	172	276	110	217	38/42/50	3.0 Ltr/Sec	



The blue measurements indicate the variable dimensions shown in the chart above. All dimensions in mm.



+44 (0)115 986 6321
aspen@canalengineering.co.uk
www.aspen.eu.com

ASPEN Side Outlet Delta Gully

Load Class up to FACTA B125



ASPEN Stainless hardworking stainless steel products for hardwearing environments:
British engineered with a lifetime guarantee.

ASPEN Drainage System

As the UK based designer and manufacturer of all ASPEN Stainless, Canal Engineering is able to offer a full range of products to complete your drainage system and can customize any of its Units or manufacture complete bespoke drainage systems.

Key Benefits

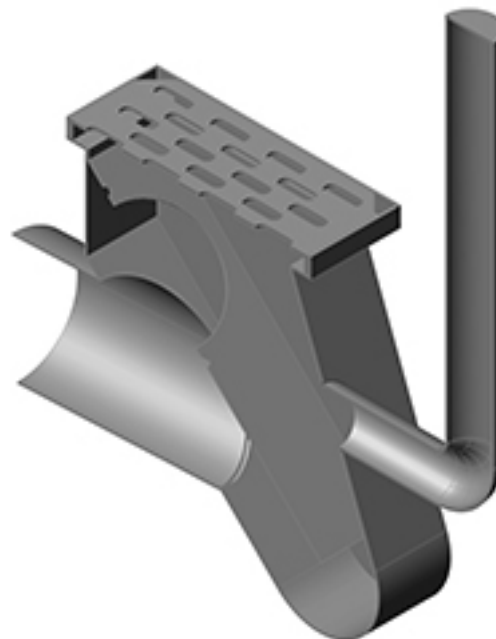
The Delta gully is a direct replacement for the traditional pot or clay road gully therefore utilising traditional design with modern materials.

Maintenance

Stainless steel equipment should be occasionally thoroughly checked for retained deposits and concentrated fluid build up that causes corrosion.

Cleaning

Many factors affect the choice of cleaning method and frequency of its application. Suitable methods for stainless steel are: water and steam; mechanical non abrasive scrubbing; organic solvents and mild detergents.



Side Outlet Delta Gully Sample

ASPEN Drainage Installation

Canal Engineering offer supply only or full installation, with fully welded and polished joints, and commissioning. Canal Engineering also offer on-going annual inspection and maintenance contracts.

For advice regarding the most suitable ASPEN Stainless for you please contact our technical sales team today to discuss your requirements.

ASPEN Drainage Options

- > Available in grade 316 stainless steel (British Standard 316S31, Euronorm 1.4401).
- > A range of Gully Covers (see TD35).
- > Locking Gully Cover.
- > Gully Membrane Flange Disc (see TD66).
- > Gully Cover lifting tools.
- > Variable filtration mesh hole size.
- > Back inlet pipe available in three different sizes.
- > Gully basket.

ASPEN Side Outlet Delta Gully

Load Class up to FACTA B125



ASPEN Stainless hardworking stainless steel products for hardwearing environments:
British engineered with a lifetime guarantee.

Product Description



The Standard Side Outlet Delta Gully is generally used against walls for collecting sink and condense waste, which has a bead blasted finish with easy access for Rodding.

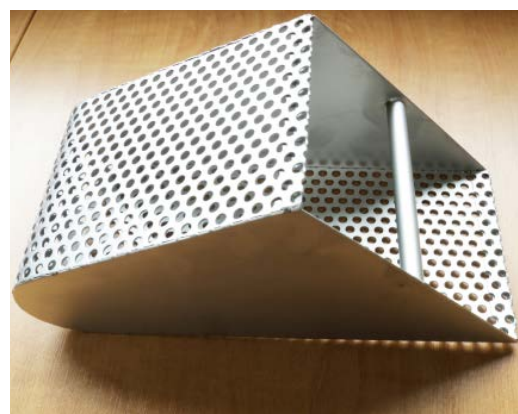
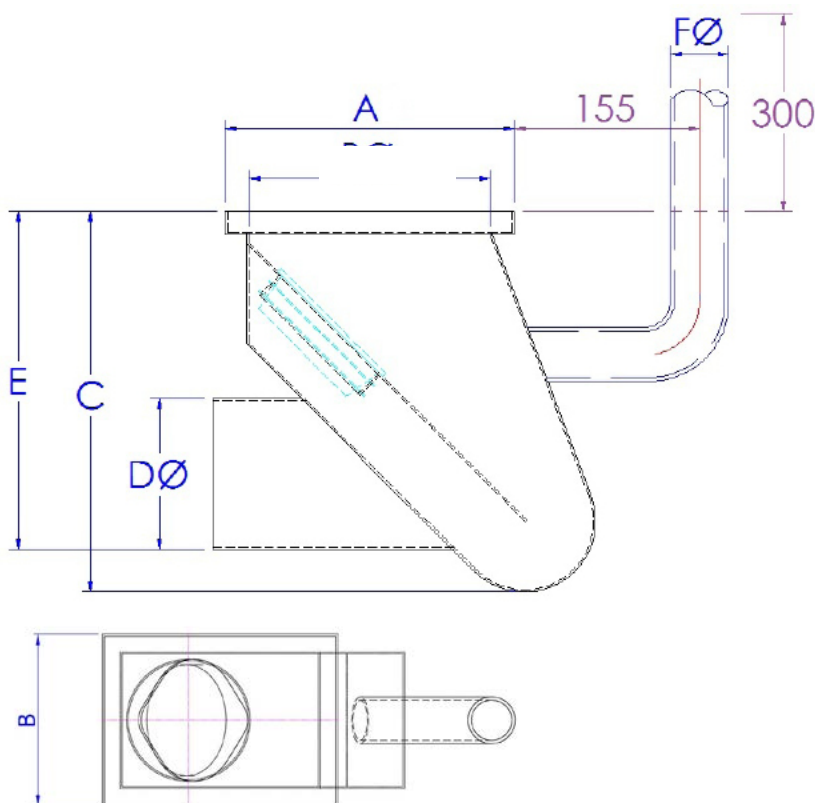
Suitable for hygienic environments accessed by light load factory traffic.

The Side Outlet Delta Gully is available in two sizes to accommodate different flow rates.

Technical Specification

- > Stainless steel plate in 1.5mm and 2mm.
- > 50mm water trap.
- > Square top Gully with slotted cover.
- > Grade 304 stainless steel (British Standard 304S31, Euronorm 1.4301)

MODEL	REF	GULLY DIMENSIONS						FLOW RATES	FACTA LOAD CLASS
		A	B	C	D	E	Fø		
DELTA 110	DGSO110	210	155	276	110	206	NA	3.0 Ltr/Sec	
DELTA & CON 110	DGSO110C	210	155	276	110	206	38/42/50	3.0 Ltr/Sec	



The blue measurements indicate the variable dimensions shown in the chart above. All dimensions in mm.



+44 (0)115 986 6321
aspen@canalengineering.co.uk
www.aspen.eu.com

ASPEN Side Outlet Delta Gully

Load Class up to FACTA B125



Stainless

ASPEN Stainless hardworking stainless steel products for hardwearing environments:
British engineered with a lifetime guarantee.

ASPEN Drainage System

As the UK based designer and manufacturer of all ASPEN Stainless, Canal Engineering is able to offer a full range of products to complete your drainage system and can customize any of its Units or manufacture complete bespoke drainage systems.

Key Benefits

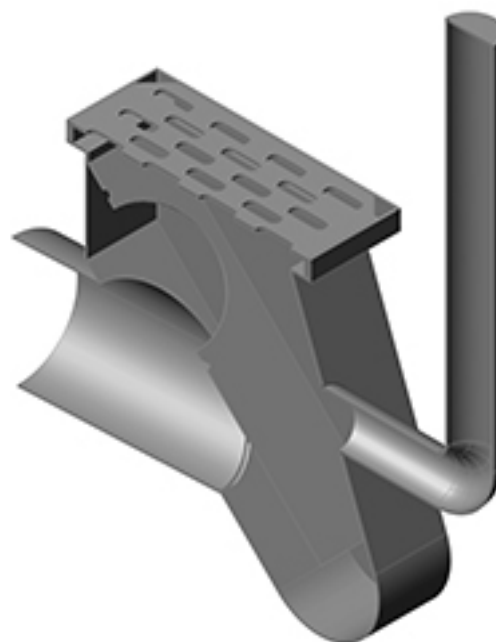
The Delta gully is a direct replacement for the traditional pot or clay road gully therefore utilising traditional design with modern materials.

Maintenance

Stainless steel equipment should be occasionally thoroughly checked for retained deposits and concentrated fluid build up that causes corrosion.

Cleaning

Many factors affect the choice of cleaning method and frequency of its application. Suitable methods for stainless steel are: water and steam; mechanical non abrasive scrubbing; organic solvents and mild detergents.



Side Outlet Delta Gully Sample

ASPEN Drainage Installation

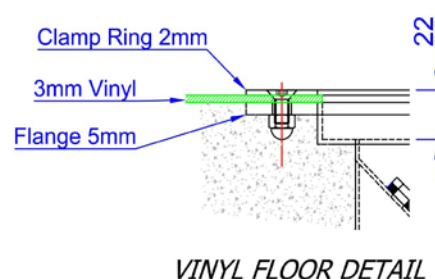
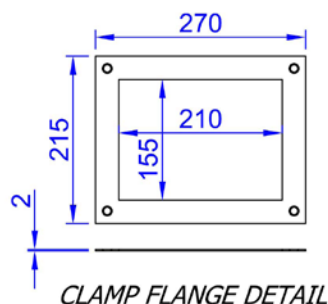
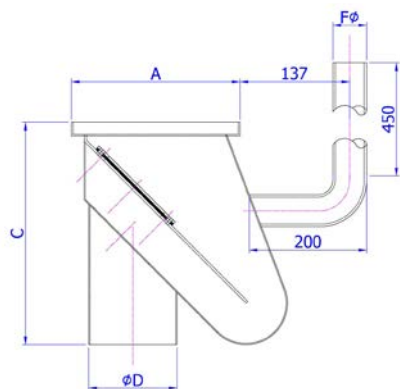
Canal Engineering offer supply only or full installation, with fully welded and polished joints, and commissioning. Canal Engineering also offer on-going annual inspection and maintenance contracts.

For advice regarding the most suitable ASPEN Stainless for you please contact our technical sales team today to discuss your requirements.

ASPEN Drainage Options

- > Available in grade 316 stainless steel (British Standard 316S31, Euronorm 1.4401).
- > A range of Gully Covers (see TD35).
- > Locking Gully Cover.
- > Gully Membrane Flange Disc (see TD66).
- > Gully Cover lifting tools.
- > Variable filtration mesh hole size.
- > Back inlet pipe available in three different sizes.
- > Gully basket.

Option For Vinyl



ASPEN Bottom Outlet Delta Gully

Load Class up to FACTA B125

ASPEN

Stainless

ASPEN Stainless hardworking stainless steel products for hardwearing environments:
British engineered with a lifetime guarantee.

Product Description



The Standard Bottom Outlet Delta Gully is generally used against walls for collecting sink and condense waste, which has a bead blasted finish with easy access for Rodding.

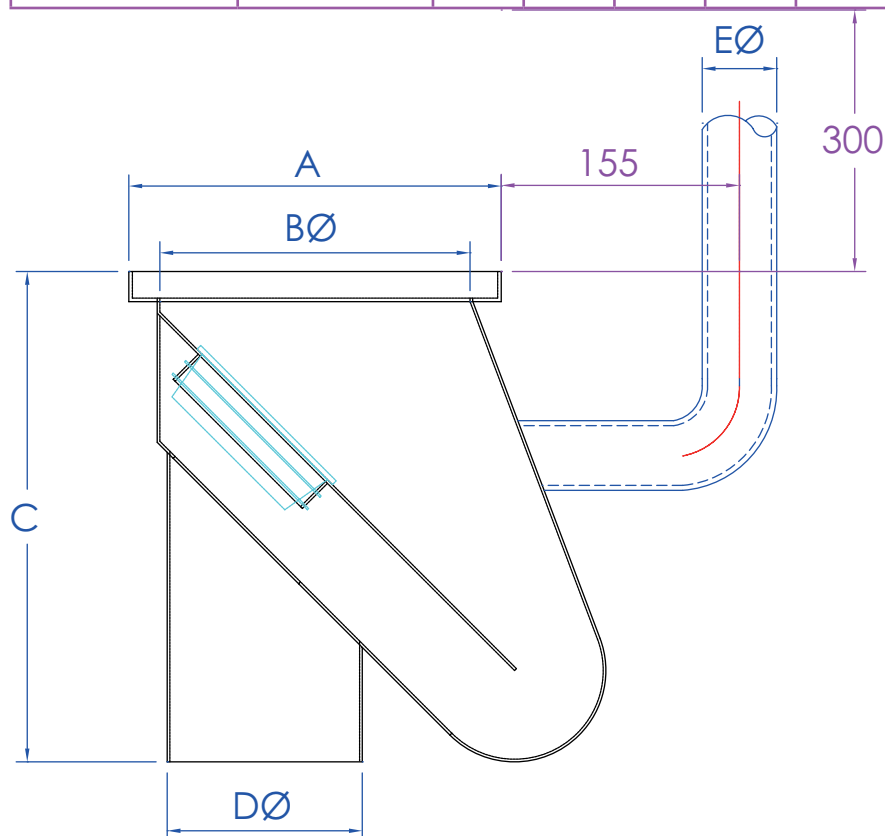
Suitable for hygienic environments accessed by light load factory traffic.

The Bottom Outlet Delta Gully is available in two sizes to accommodate different flow rates.

Technical Specification

- > Stainless steel plate in 1.5mm and 2mm.
- > 50mm water trap.
- > Square top Gully with slotted cover.
- > Grade 304 stainless steel (British Standard 304S31, Euronorm 1.4301)

MODEL	REF	GULLY DIMENSIONS					FLOW RATES	FACTA LOAD CLASS
		A	B	C	D	Eø		
DELTA 110	DGBO110	210	172	276	110	NA	3.0 Ltr/Sec	
DELTA & CON 110	DGBO110C	210	172	276	110	38/42/50	3.0 Ltr/Sec	



All dimensions in mm.



+44 (0)115 986 6321
 aspen@canalengineering.co.uk
 www.aspen.eu.com

ASPEN Bottom Outlet Delta Gully

Load Class up to FACTA B125



ASPEN Stainless hardworking stainless steel products for hardwearing environments:
British engineered with a lifetime guarantee.

ASPEN Drainage System

As the UK based designer and manufacturer of all ASPEN Stainless, Canal Engineering is able to offer a full range of products to complete your drainage system and can customize any of its Units or manufacture complete bespoke drainage systems.

Key Benefits

The Delta gully is a direct replacement for the traditional pot or clay road gully therefore utilising traditional design with modern materials.

Maintenance

Stainless steel equipment should be occasionally thoroughly checked for retained deposits and concentrated fluid build up that causes corrosion.

Cleaning

Many factors affect the choice of cleaning method and frequency of its application. Suitable methods for stainless steel are: water and steam; mechanical non abrasive scrubbing; organic solvents and mild detergents.



Bottom Outlet Delta Gully Sample

ASPEN Drainage Installation

Canal Engineering offer supply only or full installation, with fully welded and polished joints, and commissioning. Canal Engineering also offer on-going annual inspection and maintenance contracts.

For advice regarding the most suitable ASPEN Stainless for you please contact our technical sales team today to discuss your requirements.

ASPEN Drainage Options

- > Available in grade 316 stainless steel (British Standard 316S31, Euronorm 1.4401).
- > A range of Gully Covers (see TD35).
- > Locking Gully Cover.
- > Gully Membrane Flange Disc (see TD66).
- > Gully Cover lifting tools.
- > Variable filtration mesh hole size.
- > Back inlet pipe available in three different sizes.
- > Gully basket.

ASPEN Side Outlet Vail Gully | Square Top Only

Load Class up to FACTA C250



ASPEN Stainless hardworking stainless steel products for hardwearing environments:
British engineered with a lifetime guarantee.

Product Description



The Standard Side Outlet Vail Gully is a large format Gully ideal for areas of high flow rates and where invert levels are close to the surface. The Gully is bead blasted with easy access for Rodding.

Suitable for hygienic environments accessed by medium load factory traffic.

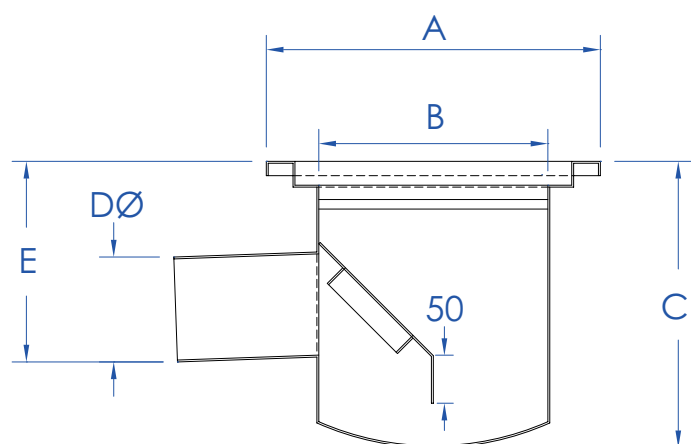
The Side Outlet Vail Gully is available in two sizes to accommodate different flow rates.

Technical Specification

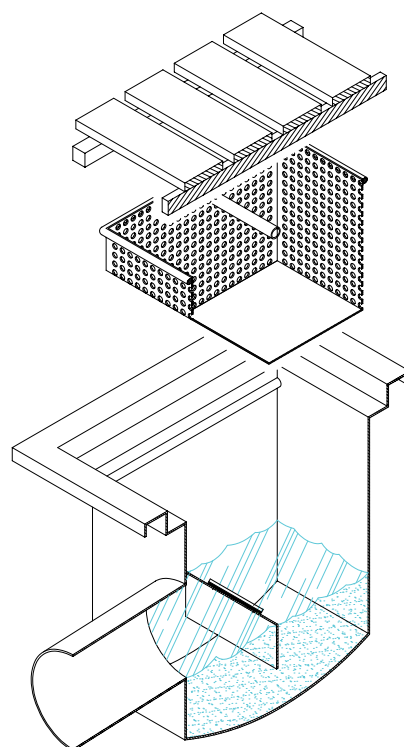
- > Stainless steel of various thicknesses.
- > 50mm water trap.
- > Square opening with 4 bar drain cover.
- > Trash basket with 6mm holes.
- > Grade 304 stainless steel (British Standard 304S31, Euronorm 1.4301).

MODEL	REF	GULLY DIMENSIONS					FLOW RATES	FACTA LOAD CLASS
		A	B	C	D	E		
VAIL 110	VGSO110	350	240	300	110	190	5.0 Ltr/Sec	
VAIL 160	VGSO160	350	240	386	160	258	10.0 Ltr/Sec	

SIDE VIEW



EXPANDED VIEW



All dimensions in mm.



+44 (0) 115 986 6321
 aspen@canalengineering.co.uk
 www.aspen.eu.com

ASPEN Side Outlet Vail Gully | Square Top Only

Load Class up to facta C250



ASPEN Stainless hardworking stainless steel products for hardwearing environments:
British engineered with a lifetime guarantee.

ASPEN Drainage System

As the UK based designer and manufacturer of all ASPEN Stainless, Canal Engineering is able to offer a full range of products to complete your drainage system and can customize any of its Units or manufacture complete bespoke drainage systems.

Key Benefits

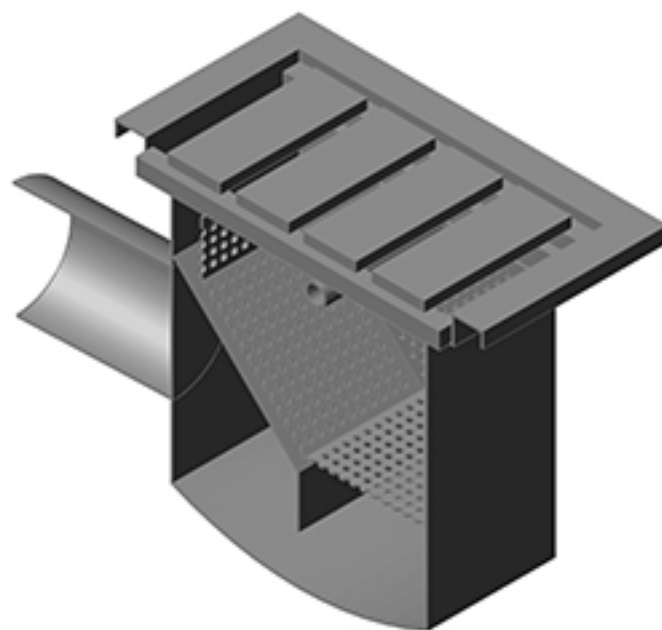
The Gully is manufactured for use in areas of high flow rates with a minimum 50mm water trap and trash basket. Trash basket can be resized to suit.

Maintenance

Stainless steel equipment should be occasionally thoroughly checked for retained deposits and concentrated fluid build up that causes corrosion.

Cleaning

Many factors affect the choice of cleaning method and frequency of its application. Suitable methods for stainless steel are: water and steam; mechanical non abrasive scrubbing; organic solvents and mild detergents.



Side Outlet Vail Gully Sample

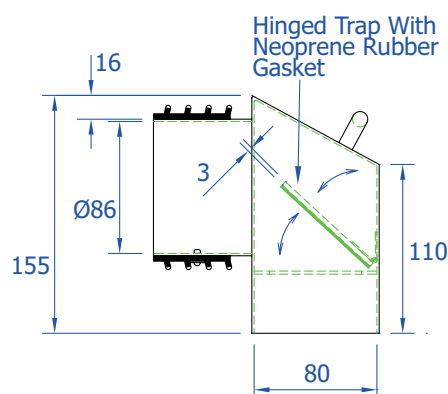
ASPEN Drainage Installation

Canal Engineering offer supply only or full installation, with fully welded and polished joints, and commissioning. Canal Engineering also offer on-going annual inspection and maintenance contracts.

For advice regarding the most suitable ASPEN Stainless for you please contact our technical sales team today to discuss your requirements.

ASPEN Drainage Options

- > Available in grade 316 stainless steel (British Standard 316S31, Euronorm 1.4401).
- > A range of Gully Covers (see TD35).
- > Locking Gully Cover.
- > Gully Membrane Flange Disc (see TD66).
- > Gully Cover lifting tools.
- > Variable filtration mesh hole size.
- > Anti Backflow Mushroom Gully Trap (see below).



Anti Backflow Mushroom Gully Trap Drawing.

ASPEN Flaine Gully

Load Class up to FACTA A15



ASPEN Stainless hardworking stainless steel products for hardwearing environments:
British engineered with a lifetime guarantee.

Product Description



The Standard Flaine Gully is usually used for sink waste and where shallow pipe inverts occur. The Gully is bead blasted with easy access for Rodding.

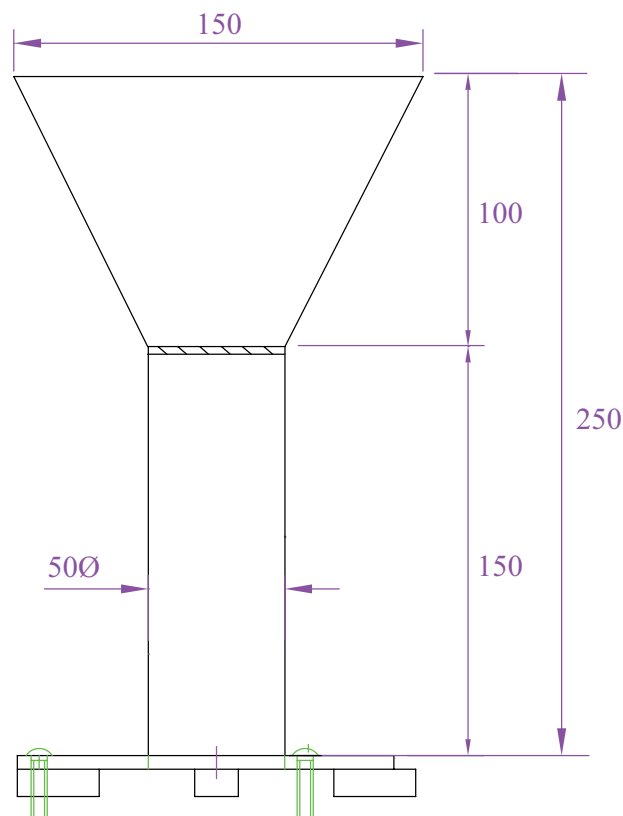
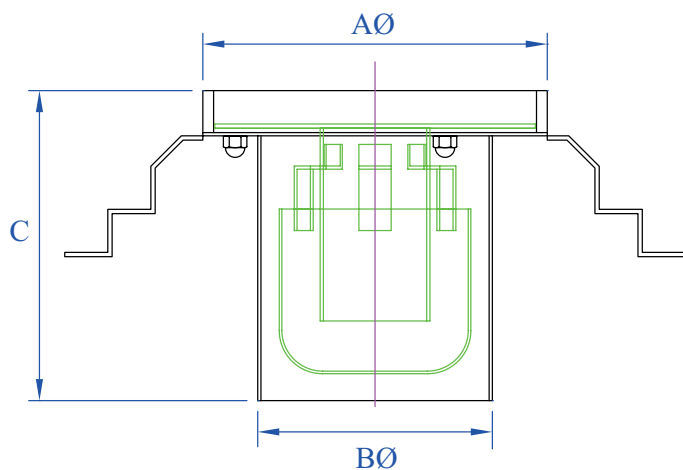
Suitable for hygienic environments accessed by pedestrian factory traffic.

The Flaine Gully is available in one size.

Technical Specification

- > Body: made from 1.5mm stainless steel.
- > 1.5mm stainless steel trap.
- > Round top Gully with smooth cover.
- > Grade 304 stainless steel (British Standard 304S31, Euronorm 1.4301).

MODEL	REF	GULLY DIMENSIONS			FLOW RATES	FACTA LOAD CLASS
		A	B	C		
FLAINE 110	FG110	160	110	145	2.0 Ltr/Sec	
FLAINE 110 & TUNDISH	FG110TD	160	110	145	2.0 Ltr/Sec	



All dimensions in mm.



+44 (0)115 986 6321
aspen@canalengineering.co.uk
www.aspen.eu.com

ASPEN Flaine Gully

Load Class up to FACTA A15



ASPEN Stainless hardworking stainless steel products for hardwearing environments:
British engineered with a lifetime guarantee.

ASPEN Drainage System

As the UK based designer and manufacturer of all ASPEN Stainless, Canal Engineering is able to offer a full range of products to complete your drainage system and can customize any of its Units or manufacture complete bespoke drainage systems.

Key Benefits

The Flaine Gully comes complete with a debris catcher and an optional Tundish top. The debris catcher prevents blockages and is fully removable for cleaning the collected debris.

The body of the gully connects directly to the sub terrain drainage pipe.

Maintenance

Stainless steel equipment should be occasionally thoroughly checked for retained deposits and concentrated fluid build up that causes corrosion.

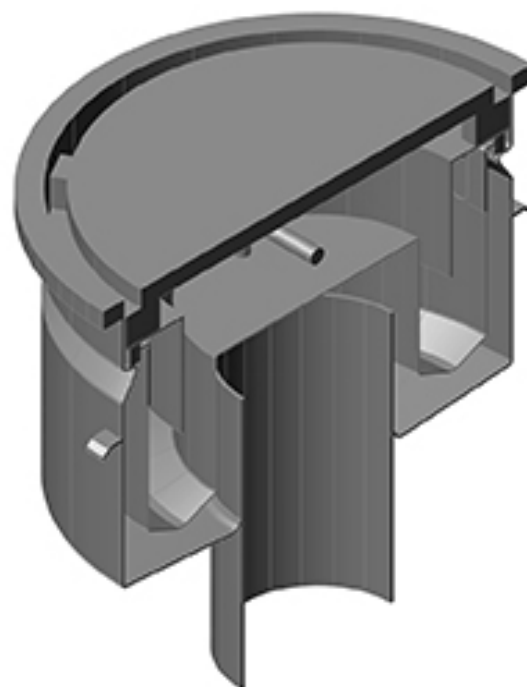
Cleaning

Many factors affect the choice of cleaning method and frequency of its application. Suitable methods for stainless steel are: water and steam; mechanical non abrasive scrubbing; organic solvents and mild detergents.

ASPEN Drainage Installation

Canal Engineering offer supply only or full installation, with fully welded and polished joints, and commissioning. Canal Engineering also offer on-going annual inspection and maintenance contracts.

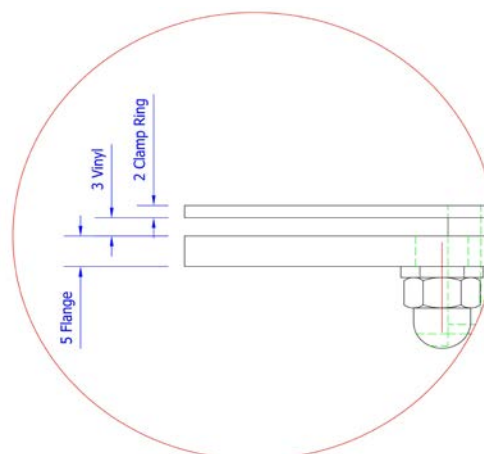
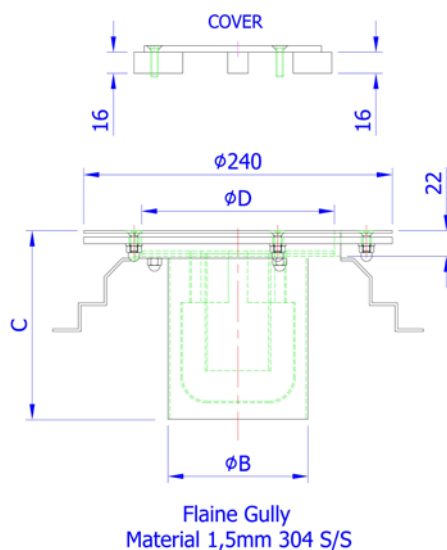
For advice regarding the most suitable ASPEN Stainless for you please contact our technical sales team today to discuss your requirements.



Flaine Gully Cross Section

ASPEN Drainage Options

- > Available in grade 316 stainless steel (British Standard 316S31, Euronorm 1.4401).
- > Square top plate for tiling.
- > A range of Gully Covers (see TD35).
- > Locking Gully Cover.
- > Gully Membrane Flange Disc (see TD66).
- > Smooth Cover and Tundish (see TD120).
- > Gully Cover lifting tools.
- > Variable filtration mesh hole size.



ASPEN Stainless hardworking stainless steel products for hardwearing environments:
British engineered with a lifetime guarantee.

Product Description

The Standard Membrane Flange is added to a Gully or Outlet at various positions to act as a second drainage source to prevent water reaching the filled concrete, which is bead blasted with easy access for Rodding.

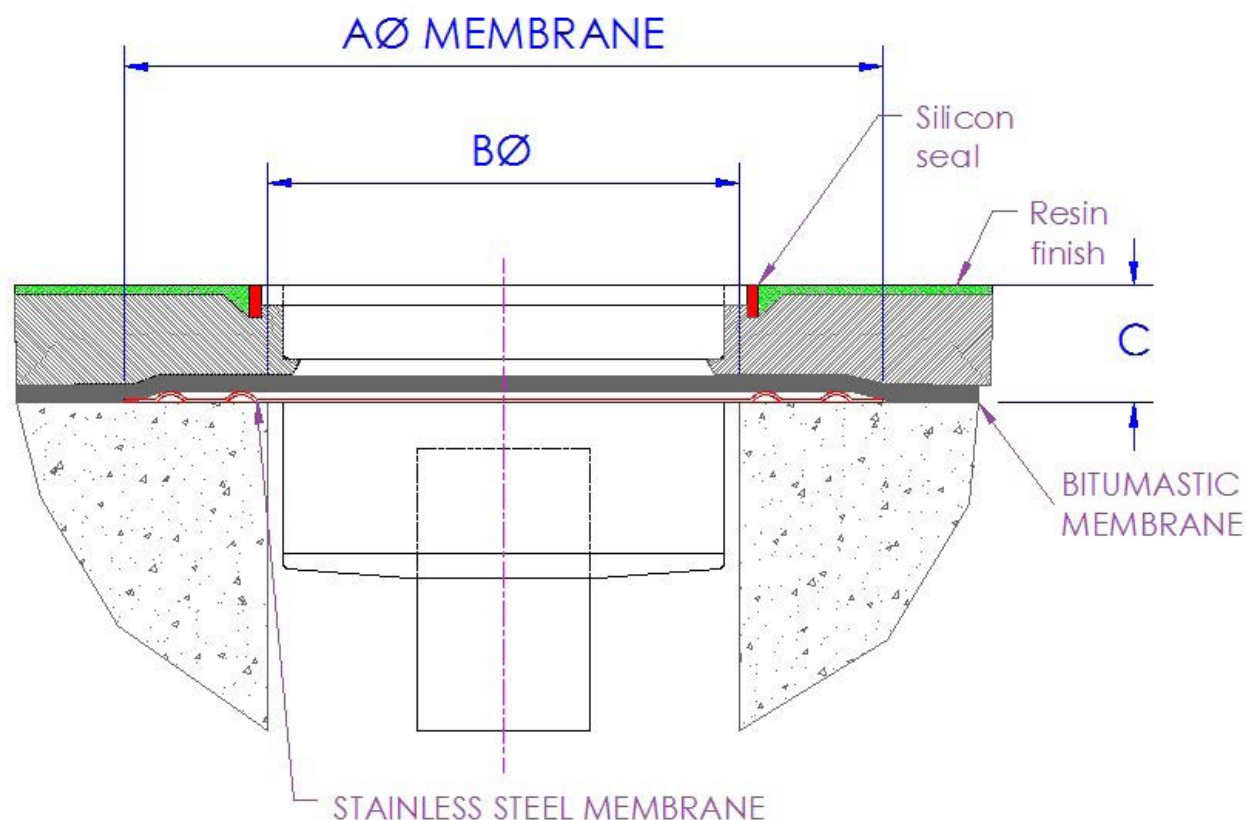
Suitable for hygienic environments.

The Membrane Flange is variable in size and available to use with the ASPEN Gully and Outlet range.

Technical Specification

- > 1.5mm stainless steel.
- > Suitable for round and square openings.
- > Grade 304 stainless steel (British Standard 304S31, Euronorm 1.4301).

MODEL	REF	MEMBRANE DIMENSIONS		
		A	B	C
GULLY	GMEMFLG	485	VARIABLE	VARIABLE
OUTLET	OMEMFLG	485	VARIABLE	VARIABLE



The blue measurements indicate the variable dimensions shown in the chart above. All dimensions in mm.

ASPEN Membrane Flange



ASPEN Stainless hardworking stainless steel products for hardwearing environments:
British engineered with a lifetime guarantee.

ASPEN Drainage System

As the UK based designer and manufacturer of all ASPEN Stainless, Canal Engineering is able to offer a full range of products to complete your drainage system and can customize any of its Units or manufacture complete bespoke drainage systems.

Key Benefits

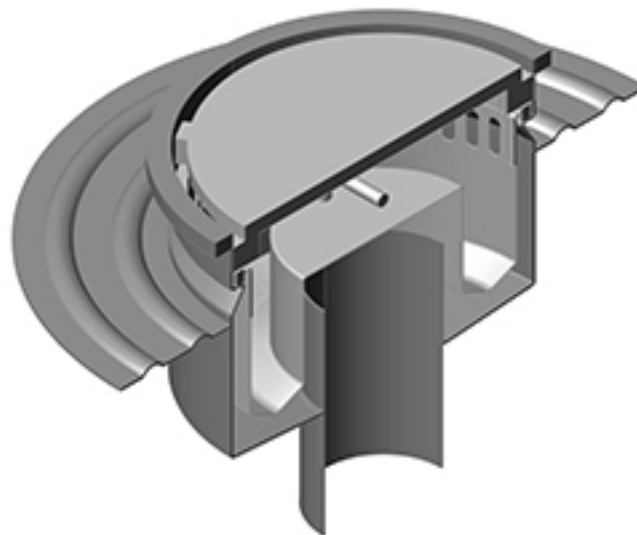
Membrane flange option can be added to the ASPEN Gully or Outlet range providing further drainage and prolonging the surrounding area.

Maintenance

Stainless steel equipment should be occasionally thoroughly checked for retained deposits and concentrated fluid build up that causes corrosion.

Cleaning

Many factors affect the choice of cleaning method and frequency of its application. Suitable methods for stainless steel are: water and steam; mechanical non abrasive scrubbing; organic solvents and mild detergents.



Membrane Flange Sample

ASPEN Drainage Installation

Canal Engineering offer supply only or full installation, with fully welded and polished joints, and commissioning. Canal Engineering also offer on-going annual inspection and maintenance contracts.

For advice regarding the most suitable ASPEN Stainless for you please contact our technical sales team today to discuss your requirements.

ASPEN Drainage Options

- > Available in grade 316 stainless steel (British Standard 316S31, Euronorm 1.4401).
- > A range of Gully Covers (see TD35).
- > Locking Gully Cover.
- > Gully Cover lifting tools.
- > Variable filtration mesh hole size.

ASPEN Anti Backflow Valve

Load Class up to FACTA C250



ASPEN Stainless hardworking stainless steel products for hardwearing environments:
British engineered with a lifetime guarantee.

Product Description

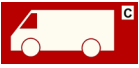

The Standard Anti Backflow Valve is designed to close off the outlet to prevent foul water and debris returning into a gully or room.

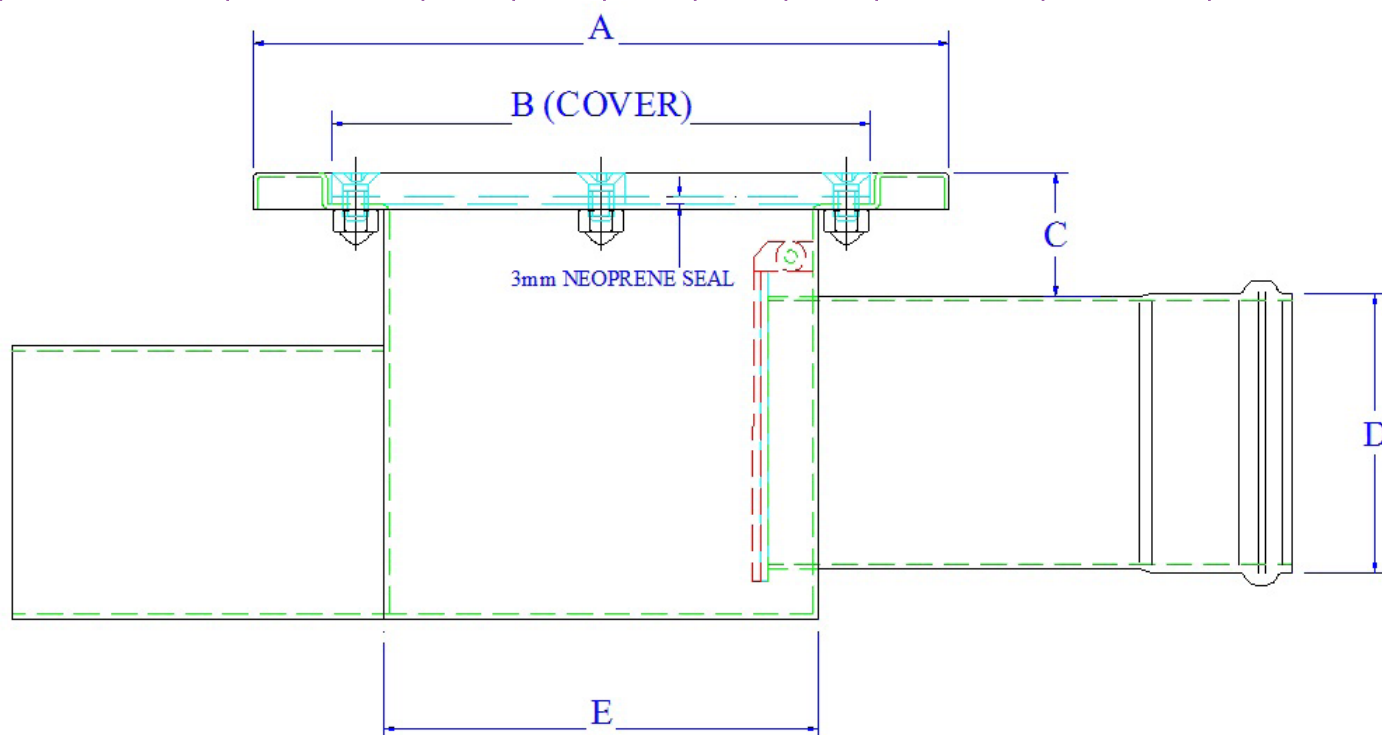
Suitable for hygienic environments accessed by medium load factory traffic.

The Anti Backflow Valve is available in two sizes to accommodate different flow rates.

Technical Specification

- > Square top.
- > 3mm neoprene seal.
- > Grade 304 stainless steel (British Standard 304S31, Euronorm 1.4301).

MODEL	REF	VALVE DIMENSIONS					FLOW RATES	FACTA LOAD CLASS
		A	B	C	D	E		
VALVE 110	ABV110	281	217	58	110	175	4.0 Ltr/Sec	
VALVE 160	ABV160	331	267	58	160	225	9.0 Ltr/Sec	



The blue measurements indicate the variable dimensions shown in the chart above. All dimensions in mm.



ASPEN Anti Backflow Valve

Load Class up to FACTA C250



ASPEN Stainless hardworking stainless steel products for hardwearing environments:
British engineered with a lifetime guarantee.

ASPEN Drainage System

As the UK based designer and manufacturer of all ASPEN Stainless, Canal Engineering is able to offer a full range of products to complete your drainage system and can customize any of its Units or manufacture complete bespoke drainage systems.

Key Benefits

The Valve is designed to eliminate the backflow of foul water and debris into a Gully or room.

Maintenance

Stainless steel equipment should be occasionally thoroughly checked for retained deposits and concentrated fluid build up that causes corrosion.

Cleaning

Many factors affect the choice of cleaning method and frequency of its application. Suitable methods for stainless steel are: water and steam; mechanical non abrasive scrubbing; organic solvents and mild detergents.



Anti Backflow Valve Sample

ASPEN Drainage Installation

Canal Engineering offer supply only or full installation, with fully welded and polished joints, and commissioning. Canal Engineering also offer on-going annual inspection and maintenance contracts.

For advice regarding the most suitable ASPEN Stainless for you please contact our technical sales team today to discuss your requirements.

ASPEN Drainage Options

- > Available in grade 316 stainless steel (British Standard 316S31, Euronorm 1.4401).
- > Suited for the ASPEN Gullies.

ASPEN Anti Backflow Valve

Load Class up to FACTA C250

ASPEN

Stainless

ASPEN Stainless hardworking stainless steel products for hardwearing environments:
British engineered with a lifetime guarantee.

Product Description



The Standard Anti Backflow Valve is designed to close off the outlet to prevent foul water and debris returning into a gully or room.

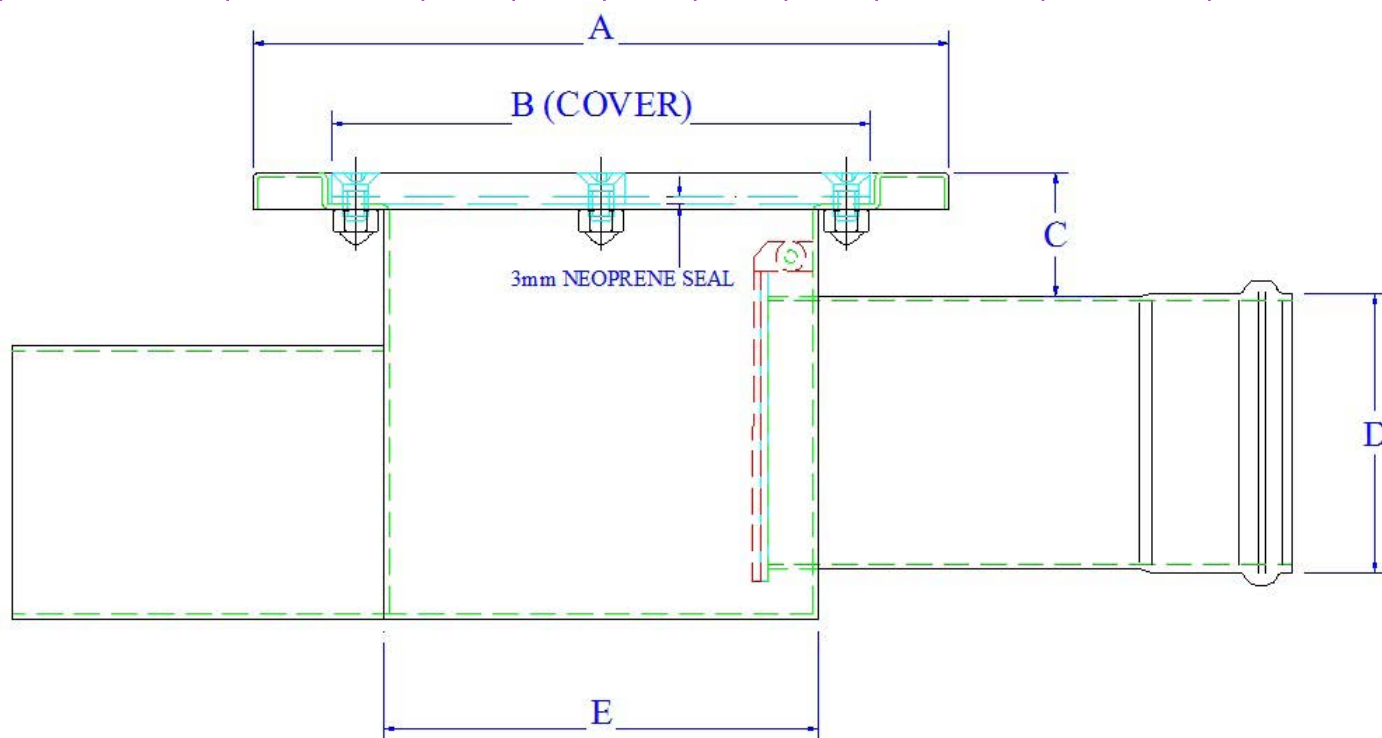
Suitable for hygienic environments accessed by medium load factory traffic.

The Anti Backflow Valve is available in two sizes to accommodate different flow rates.

Technical Specification

- > Square top.
- > 3mm neoprene seal.
- > Grade 304 stainless steel (British Standard 304S31, Euronorm 1.4301).

MODEL	REF	VALVE DIMENSIONS					FLOW RATES	FACTA LOAD CLASS
		A	B	C	D	E		
VALVE 110	ABV110	281	217	58	110	175	4.0 Ltr/Sec	
VALVE 160	ABV160	331	267	58	160	225	9.0 Ltr/Sec	



The blue measurements indicate the variable dimensions shown in the chart above. All dimensions in mm.



+44 (0)115 986 6321
aspen@canalengineering.co.uk
www.aspen.eu.com

ASPEN Anti Backflow Valve

Load Class up to FACTA C250



ASPEN Stainless hardworking stainless steel products for hardwearing environments:
British engineered with a lifetime guarantee.

ASPEN Drainage System

As the UK based designer and manufacturer of all ASPEN Stainless, Canal Engineering is able to offer a full range of products to complete your drainage system and can customize any of its Units or manufacture complete bespoke drainage systems.

Key Benefits

The Valve is designed to eliminate the backflow of foul water and debris into a Gully or room.

Maintenance

Stainless steel equipment should be occasionally thoroughly checked for retained deposits and concentrated fluid build up that causes corrosion.

Cleaning

Many factors affect the choice of cleaning method and frequency of its application. Suitable methods for stainless steel are: water and steam; mechanical non abrasive scrubbing; organic solvents and mild detergents.



Anti Backflow Valve Sample

ASPEN Drainage Installation

Canal Engineering offer supply only or full installation, with fully welded and polished joints, and commissioning. Canal Engineering also offer on-going annual inspection and maintenance contracts.

For advice regarding the most suitable ASPEN Stainless for you please contact our technical sales team today to discuss your requirements.

ASPEN Drainage Options

- > Available in grade 316 stainless steel (British Standard 316S31, Euronorm 1.4401).
- > Suited for the ASPEN Gullies.

ASPEN Summit Gully 'Catch Pot'

Load Class up to FACTA C250



Stainless

ASPEN Stainless hardworking stainless steel products for hardwearing environments:
British engineered with a lifetime guarantee.


Product Description

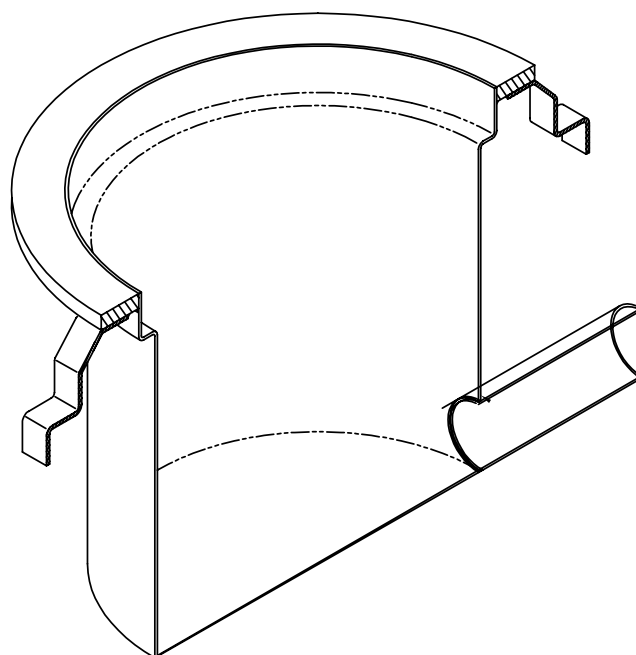
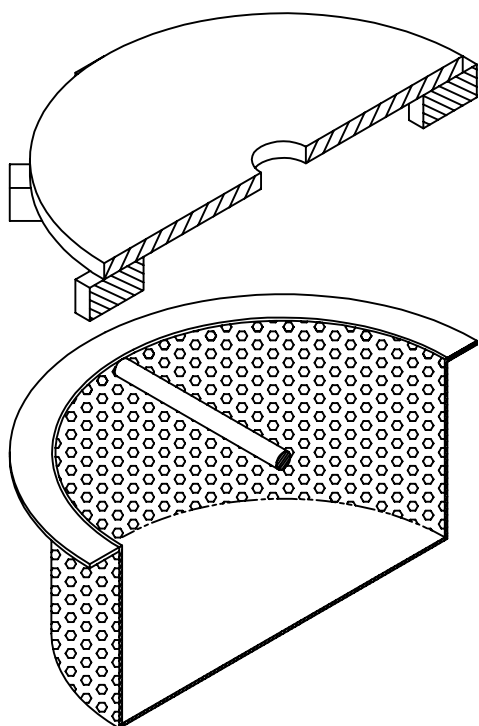
The Standard Summit Gully 'Catch Pot' for bespoke drainage application designed for use in most areas, bead blasted finish.

Suitable for hygienic environments accessed by medium load factory traffic.

Technical Specification

- > Stainless steel of various thicknesses.
- > Round opening with smooth cover.
- > Grade 304 stainless steel (British Standard 304S31, Euronorm 1.4301).

MODEL	REF	GULLY DIMENSIONS					FACTA LOAD CLASS
		A	B	C	D	E	
SUMMIT 110	SGR110	270	200	113	38/50	295	



The blue measurements indicate the variable dimensions shown in the chart above. All dimensions in mm.



+44 (0)115 986 6321
aspen@canalengineering.co.uk
www.aspen.eu.com

ASPEN Summit Gully 'Catch Pot'

Load Class up to FACTA C250



ASPEN Stainless hardworking stainless steel products for hardwearing environments:
British engineered with a lifetime guarantee.

ASPEN Drainage System

As the UK based designer and manufacturer of all ASPEN Stainless, Canal Engineering is able to offer a full range of products to complete your drainage system and can customize any of its Units or manufacture complete bespoke drainage systems.

Key Benefits

The Summit Gully is manufactured with a drainable 50mm water trap and removable trash basket.

Maintenance

Stainless steel equipment should be occasionally thoroughly checked for retained deposits and concentrated fluid build up that causes corrosion.

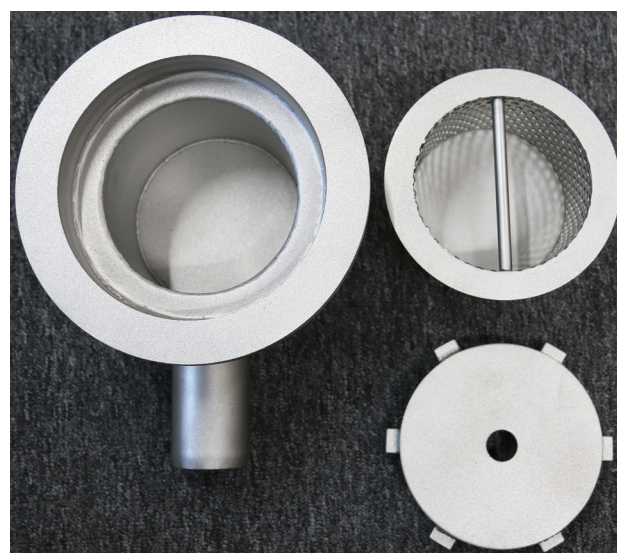
Cleaning

Many factors affect the choice of cleaning method and frequency of its application. Suitable methods for stainless steel are: water and steam; mechanical non abrasive scrubbing; organic solvents and mild detergents.

ASPEN Drainage Installation

Canal Engineering offer supply only or full installation, with fully welded and polished joints, and commissioning. Canal Engineering also offer on-going annual inspection and maintenance contracts.

For advice regarding the most suitable ASPEN Stainless for you please contact our technical sales team today to discuss your requirements.



Different Sized Summit Gully 'Catch Pot' Samples

ASPEN Drainage Options

- > Available in grade 316 stainless steel (British Standard 316S31, Euronorm 1.4401).
- > A range of Gully Covers (see TD35).
- > Gully Membrane Flange (see TD66).
- > Gully Basket.
- > Condense.
- > Locking Gully Cover.
- > Gully Cover lifting tools.
- > Variable filtration mesh hole size.

ASPEN Summit Gully 'Catch Pot'

Load Class up to FACTA C250



Stainless

ASPEN Stainless hardworking stainless steel products for hardwearing environments:
British engineered with a lifetime guarantee.


Product Description

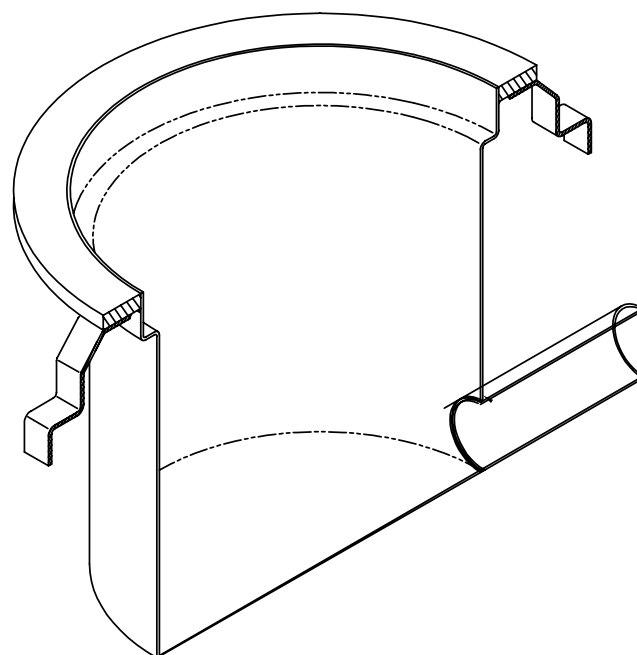
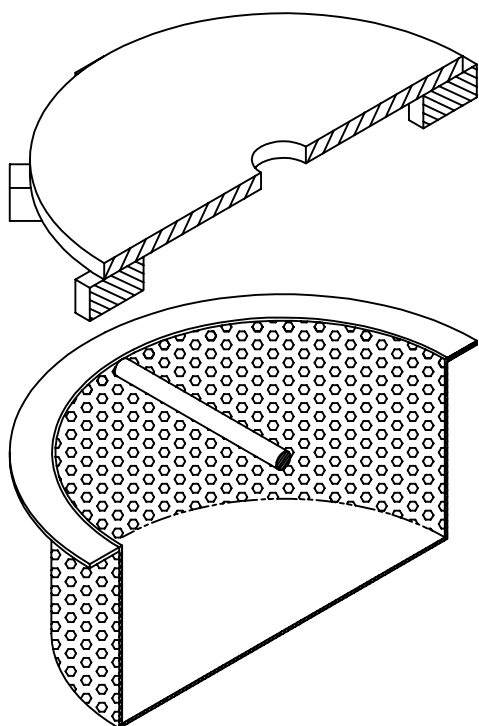
The Standard Summit Gully 'Catch Pot' for bespoke drainage application designed for use in most areas, bead blasted finish.

Suitable for hygienic environments accessed by medium load factory traffic.

Technical Specification

- > Stainless steel of various thicknesses.
- > Round opening with smooth cover.
- > Grade 304 stainless steel (British Standard 304S31, Euronorm 1.4301).

MODEL	REF	GULLY DIMENSIONS					FACTA LOAD CLASS
		A	B	C	D	E	
SUMMIT 110	SGR110	270	200	113	38/50	295	



The blue measurements indicate the variable dimensions shown in the chart above. All dimensions in mm.



+44 (0)115 986 6321
aspen@canalengineering.co.uk
www.aspen.eu.com

ASPEN Summit Gully 'Catch Pot'

Load Class up to FACTA C250



ASPEN Stainless hardworking stainless steel products for hardwearing environments:
British engineered with a lifetime guarantee.

ASPEN Drainage System

As the UK based designer and manufacturer of all ASPEN Stainless, Canal Engineering is able to offer a full range of products to complete your drainage system and can customize any of its Units or manufacture complete bespoke drainage systems.

Key Benefits

The Summit Gully is manufactured with a drainable 50mm water trap and removable trash basket.

Maintenance

Stainless steel equipment should be occasionally thoroughly checked for retained deposits and concentrated fluid build up that causes corrosion.

Cleaning

Many factors affect the choice of cleaning method and frequency of its application. Suitable methods for stainless steel are: water and steam; mechanical non abrasive scrubbing; organic solvents and mild detergents.

ASPEN Drainage Installation

Canal Engineering offer supply only or full installation, with fully welded and polished joints, and commissioning. Canal Engineering also offer on-going annual inspection and maintenance contracts.

For advice regarding the most suitable ASPEN Stainless for you please contact our technical sales team today to discuss your requirements.



Summit Gully 'Catch Pot' Sample

ASPEN Drainage Options

- > Available in grade 316 stainless steel (British Standard 316S31, Euronorm 1.4401).
- > A range of Gully Covers (see TD35).
- > Gully Membrane Flange (see TD66).
- > Gully Basket.
- > Condense.
- > Locking Gully Cover.
- > Gully Cover lifting tools.
- > Variable filtration mesh hole size.

ASPEN Summit Gully Round Top For Vinyl Floor

Load Class up to FACTA C250



ASPEN Stainless hardworking stainless steel products for hardwearing environments:
British engineered with a lifetime guarantee.

Product Description



The Standard Summit Gully is a general purpose Gully designed for use in most areas, which has a bead blasted finish with easy access for Rodding.

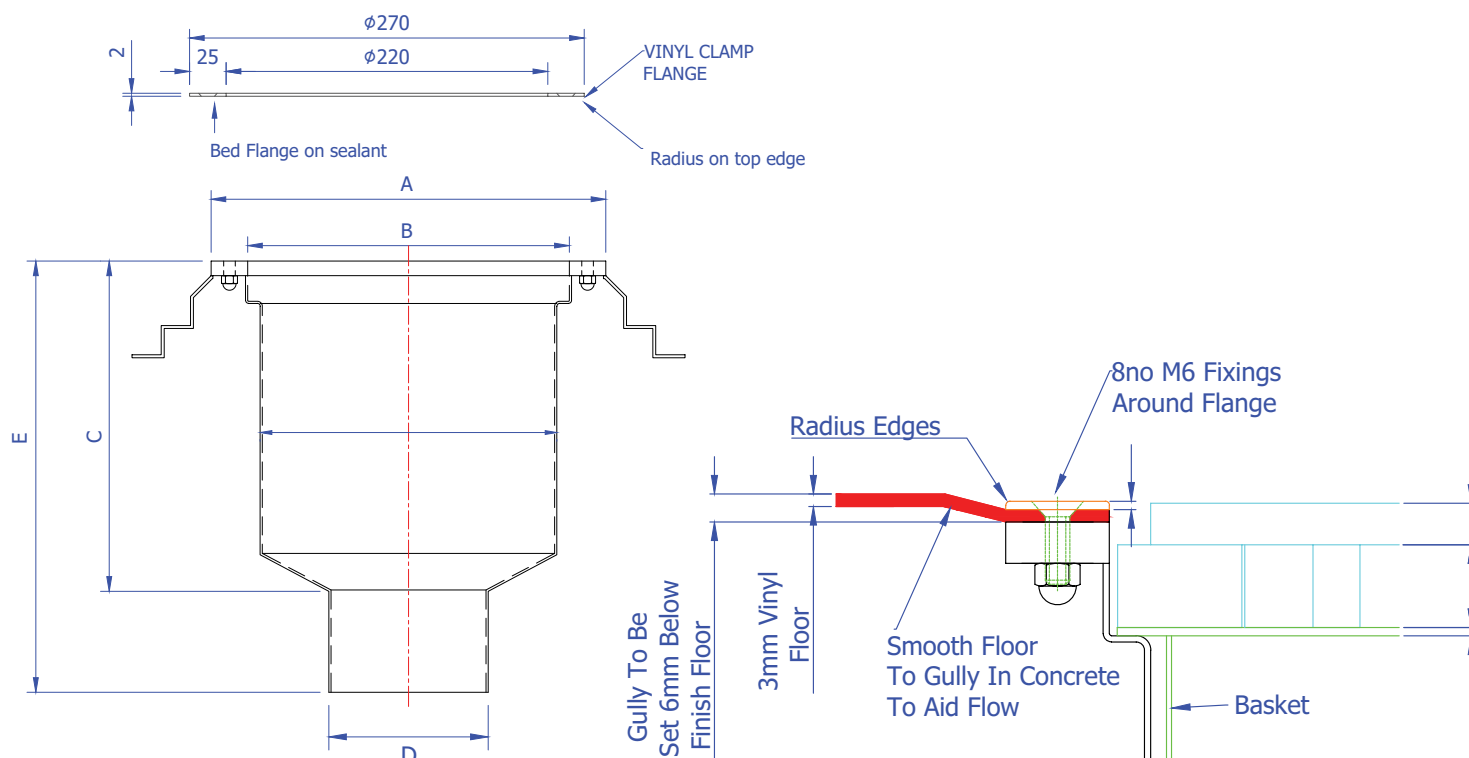
Suitable for hygienic environments accessed by medium load factory traffic.

The gully here is adapted for use with a vinyl floor and sandwich's the floor between the gully and separate top flange, for use with 3mm flooring, other sizes on request.

Technical Specification

- > Stainless steel of various thicknesses.
- > 50mm water trap.
- > Round opening with smooth cover.
- > Grade 304 stainless steel (British Standard 304S31, Euronorm 1.4301).

MODEL	REF	GULLY DIMENSIONS					FLOW RATES	FACTA LOAD CLASS
		A	B	C	D	E		
SUMMIT 110	SGR110	270	200	235	110	295	3.0 Ltr/Sec	
SUMMIT & CON 110	SGR110C	270	200	235	110	295	3.0 Ltr/Sec	



The blue measurements indicate the variable dimensions shown in the chart above. All dimensions in mm.



+44 (0)115 986 6321
 aspen@canalengineering.co.uk
 www.aspen.eu.com

ASPEN Summit Gully Round Top For Vinyl Floor

Load Class up to FACTA C250



Stainless

ASPEN Stainless hardworking stainless steel products for hardwearing environments:
British engineered with a lifetime guarantee.

ASPEN Drainage System

As the UK based designer and manufacturer of all ASPEN Stainless, Canal Engineering is able to offer a full range of products to complete your drainage system and can customize any of its Units or manufacture complete bespoke drainage systems.

Key Benefits

The Summit Gully is manufactured with a drainable 50mm water trap and removable trash basket.

Maintenance

Stainless steel equipment should be occasionally thoroughly checked for retained deposits and concentrated fluid build up that causes corrosion.

Cleaning

Many factors affect the choice of cleaning method and frequency of its application. Suitable methods for stainless steel are: water and steam; mechanical non abrasive scrubbing; organic solvents and mild detergents.

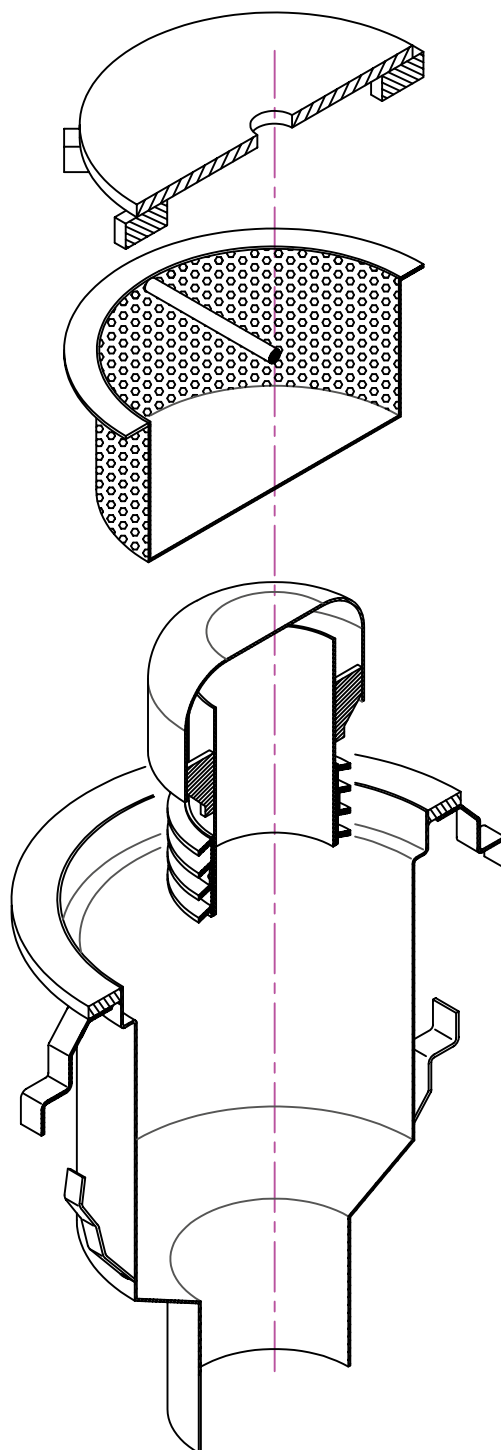
ASPEN Drainage Installation

Canal Engineering offer supply only or full installation, with fully welded and polished joints, and commissioning. Canal Engineering also offer on-going annual inspection and maintenance contracts.

For advice regarding the most suitable ASPEN Stainless for you please contact our technical sales team today to discuss your requirements.

ASPEN Drainage Options

- > Available in grade 316 stainless steel (British Standard 316S31, Euronorm 1.4401).
- > A range of Gully Covers (see TD35).
- > Gully Membrane Flange (see TD66).
- > Gully Basket.
- > Condense.
- > Locking Gully Cover.
- > Gully Cover lifting tools.
- > Variable filtration mesh hole size.
- > For use with vinyl floors.



ASPEN Square Vinyl Floor Side Outlet Gully

Load Class up to FACTA B125



ASPEN Stainless hardworking stainless steel products for hardwearing environments:
British engineered with a lifetime guarantee.


Product Description

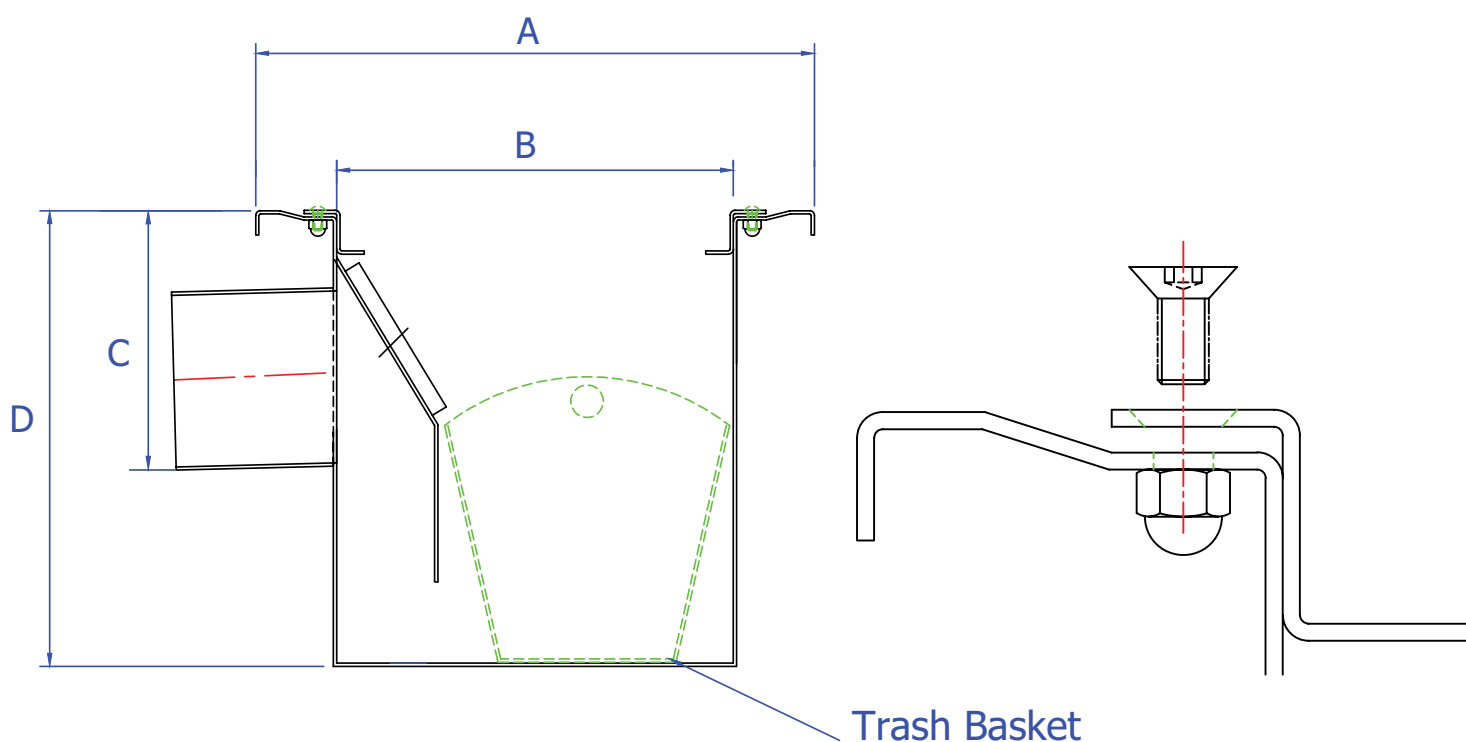
This Square Vinyl Floor Side Outlet Gully is generally used for small volumes of water collecting sink and condense waste, and has a bead blasted finish with easy access for Rodding.

Suitable for hygienic environments accessed by light load factory traffic.

Technical Specification

- > Stainless steel plate in 1.5mm and 2mm.
- > 50mm water trap.
- > Square top Gully with slotted cover.
- > Grade 304 stainless steel (British Standard 304S31, Euronorm 1.4301)

MODEL	REF	GULLY DIMENSIONS				FACTA LOAD CLASS
		A	B	C	D	
SIDE OUTLET	DGBO110	345	245	180	282	 B



All dimensions in mm.



+44 (0)115 986 6321
aspen@canalengineering.co.uk
www.aspen.eu.com

ASPEN Square Vinyl Floor Side Outlet Gully

Load Class up to FACTA B125



ASPEN Stainless hardworking stainless steel products for hardwearing environments:
British engineered with a lifetime guarantee.

ASPEN Drainage System

As the UK based designer and manufacturer of all ASPEN Stainless, Canal Engineering is able to offer a full range of products to complete your drainage system and can customize any of its Units or manufacture complete bespoke drainage systems.

Key Benefits

The Delta gully is a direct replacement for the traditional pot or clay road gully therefore utilising traditional design with modern materials.

Maintenance

Stainless steel equipment should be occasionally thoroughly checked for retained deposits and concentrated fluid build up that causes corrosion.

Cleaning

Many factors affect the choice of cleaning method and frequency of its application. Suitable methods for stainless steel are: water and steam; mechanical non abrasive scrubbing; organic solvents and mild detergents.

ASPEN Drainage Installation

Canal Engineering offer supply only or full installation, with fully welded and polished joints, and commissioning. Canal Engineering also offer on-going annual inspection and maintenance contracts.

For advice regarding the most suitable ASPEN Stainless for you please contact our technical sales team today to discuss your requirements.

ASPEN Drainage Options

- > Available in grade 316 stainless steel (British Standard 316S31, Euronorm 1.4401).
- > A range of Gully Covers (see TD35).
- > Locking Gully Cover.
- > Gully Membrane Flange Disc (see TD66).
- > Gully Cover lifting tools.
- > Variable filtration mesh hole size.
- > Back inlet pipe available in three different sizes.
- > Gully basket.

ASPEN Round Vinyl Floor Flaine Gully

Load Class up to FACTA B125



ASPEN Stainless hardworking stainless steel products for hardwearing environments:
British engineered with a lifetime guarantee.


Product Description

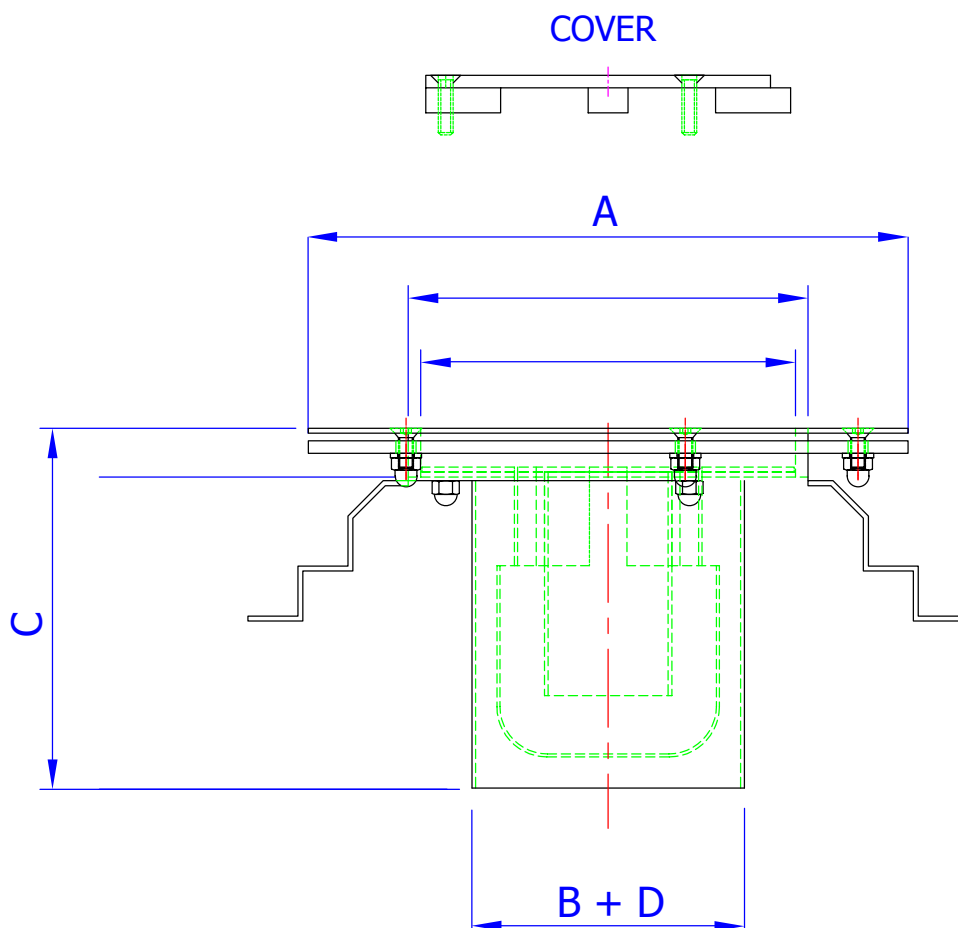
This Round Vinyl Floor Bottom Outlet Gully is generally used for small volumes of water collecting sink and condense waste, and has a bead blasted finish with easy access for Rodding.

Suitable for hygienic environments accessed by light load factory traffic.

Technical Specification

- > Stainless steel plate in 1.5mm and 2mm.
- > 50mm water trap.
- > Round top Gully with slotted cover.
- > Grade 304 stainless steel (British Standard 304S31, Euronorm 1.4301)

MODEL	REF	GULLY DIMENSIONS				FACTA LOAD CLASS
		A	B	C	D	
SIDE OUTLET	DGBO110	240	110	145	110	



All dimensions in mm.



+44 (0)115 986 6321
aspen@canalengineering.co.uk
www.aspen.eu.com

ASPEN Round Vinyl Floor Flaine Gully

Load Class up to FACTA B125



ASPEN Stainless hardworking stainless steel products for hardwearing environments:
British engineered with a lifetime guarantee.

ASPEN Drainage System

As the UK based designer and manufacturer of all ASPEN Stainless, Canal Engineering is able to offer a full range of products to complete your drainage system and can customize any of its Units or manufacture complete bespoke drainage systems.

Key Benefits

The Delta gully is a direct replacement for the traditional pot or clay road gully therefore utilising traditional design with modern materials.

Maintenance

Stainless steel equipment should be occasionally thoroughly checked for retained deposits and concentrated fluid build up that causes corrosion.

Cleaning

Many factors affect the choice of cleaning method and frequency of its application. Suitable methods for stainless steel are: water and steam; mechanical non abrasive scrubbing; organic solvents and mild detergents.

ASPEN Drainage Installation

Canal Engineering offer supply only or full installation, with fully welded and polished joints, and commissioning. Canal Engineering also offer on-going annual inspection and maintenance contracts.

For advice regarding the most suitable ASPEN Stainless for you please contact our technical sales team today to discuss your requirements.

ASPEN Drainage Options

- > Available in grade 316 stainless steel (British Standard 316S31, Euronorm 1.4401).
- > A range of Gully Covers (see TD35).
- > Locking Gully Cover.
- > Gully Membrane Flange Disc (see TD66).
- > Gully Cover lifting tools.
- > Variable filtration mesh hole size.
- > Back inlet pipe available in three different sizes.
- > Gully basket.



ASPEN Tundish for Condense Pipes



ASPEN Stainless hardworking stainless steel products for hardwearing environments:
British engineered with a lifetime guarantee.

Product Description

The standard Tundish is used for condense or sink waste air breaks between the outlet Gully and the feed pipe. Rodent Mesh is added as a safe guard.

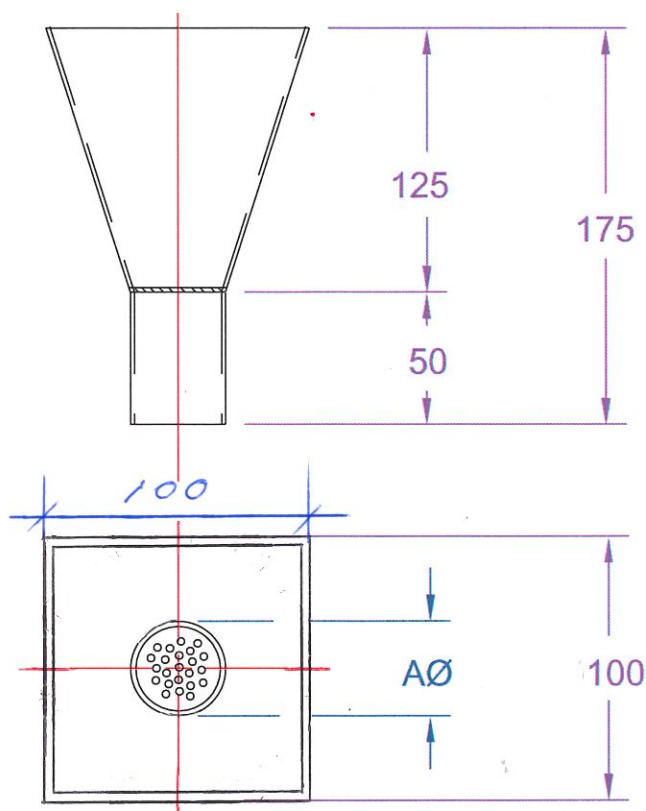
Suitable for hygienic environments.

Technical Specification

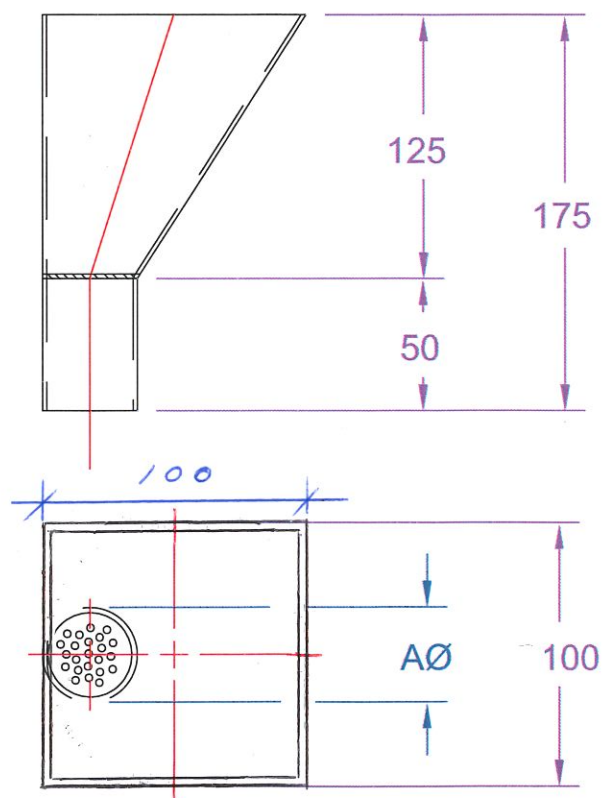
- > 32 or 42mm stainless steel pipe.
- > Straight or angled stainless steel funnel opening.
- > Stainless steel Rodent Mesh 6mm holes.
- > Grade 304 stainless steel (British Standard 304S31, Euronorm 1.4301)

MODEL	REF	TUNDISH DIMENSIONS
		A
STRAIGHT	TDISHS CP	32/42ø
ANGLED	TDISHA CP	32/42ø

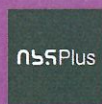
STRAIGHT TUNDISH



ANGLED TUNDISH



All dimensions in mm.



+44 (0)115 986 6321
 aspen@canalengineering.co.uk
 www.aspen.eu.com

ASPEN Tundish for Condense Pipes



ASPEN Stainless hardworking stainless steel products for hardwearing environments:
British engineered with a lifetime guarantee.

Product Description

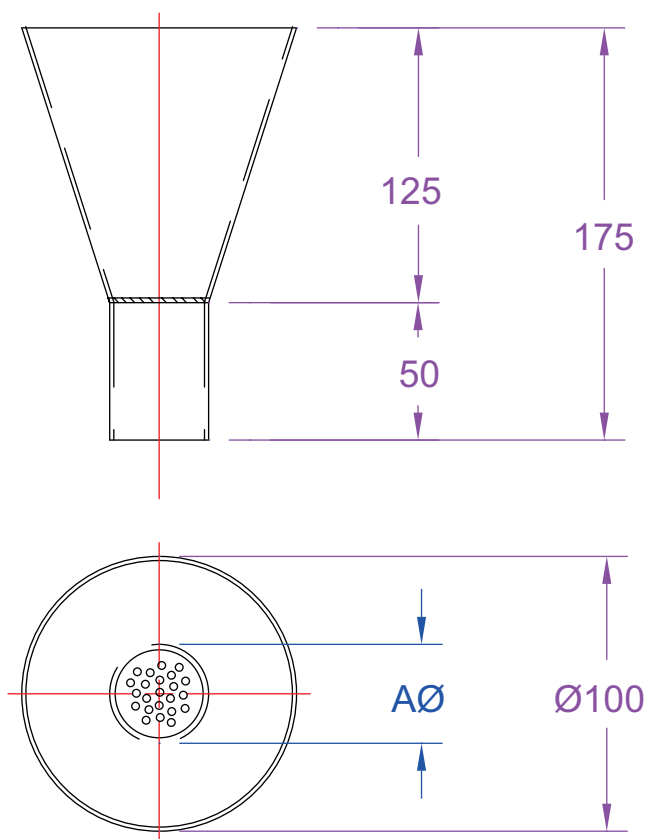
The standard Tundish is used for condense or sink waste air breaks between the outlet Gully and the feed pipe.
Rodent Mesh is added as a safe guard.
Suitable for hygienic environments.

Technical Specification

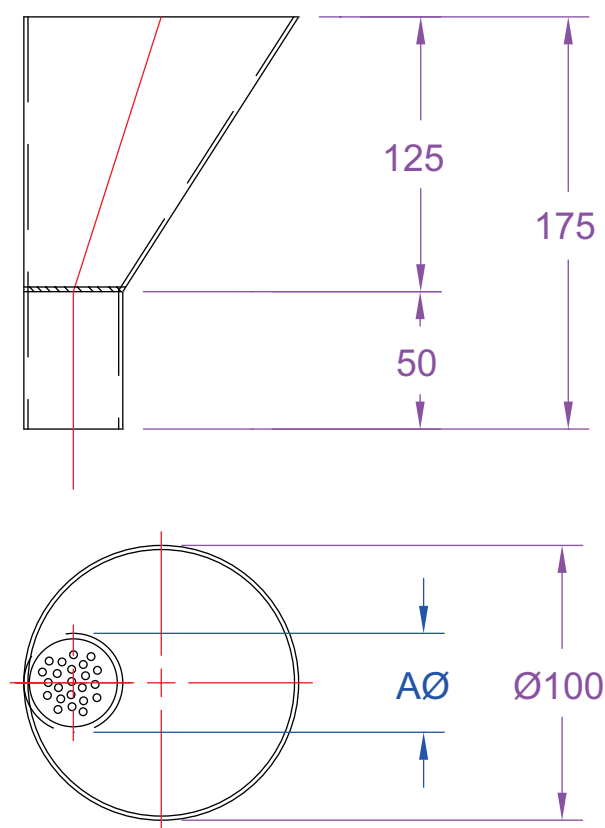
- > 32 or 42ømm stainless steel pipe.
- > Straight or angled stainless steel funnel opening.
- > Stainless steel Rodent Mesh 6ømm holes.
- > Grade 304 stainless steel (British Standard 304S31, Euronorm 1.4301)

MODEL	REF	TUNDISH DIMENSIONS
		A
STRAIGHT	TDISHS CP	32/42ø
ANGLED	TDISHA CP	32/42ø

STRAIGHT TUNDISH



ANGLED TUNDISH



All dimensions in mm.



+44 (0)115 986 6321
aspen@canalengineering.co.uk
www.aspen.eu.com

ASPEN Tundish for Condense Pipes



ASPEN Stainless hardworking stainless steel products for hardwearing environments:
British engineered with a lifetime guarantee.

ASPEN Drainage System

As the UK based designer and manufacturer of all ASPEN Stainless, Canal Engineering is able to offer a full range of products to complete your drainage system and can customize any of its Units or manufacture complete bespoke drainage systems.

Key Benefits

This design is ideal for easy clean and maintenance and compliments the total ASPEN drainage package.

Maintenance

Stainless steel equipment should be occasionally thoroughly checked for retained deposits and concentrated fluid build up that causes corrosion.

Cleaning

Many factors affect the choice of cleaning method and frequency of its application. Suitable methods for stainless steel are: water and steam; mechanical non abrasive scrubbing; organic solvents and mild detergents.

ASPEN Drainage Installation

Canal Engineering offer supply only or full installation, with fully welded and polished joints, and commissioning. Canal Engineering also offer on-going annual inspection and maintenance contracts.

For advice regarding the most suitable ASPEN Stainless for you please contact our technical sales team today to discuss your requirements.



Tundish Sample

ASPEN Drainage Options

> Available in grade 316 stainless steel (British Standard 316S31, Euronorm 1.4401).

ASPEN Vertical Anti Backflow Valve

Load Class up to FACTA C250

ASPEN

Stainless

ASPEN Stainless hardworking stainless steel products for hardwearing environments:

British engineered with a lifetime guarantee.

Product Description

The Standard Anti Backflow Valve is designed to close off the outlet to prevent foul water and debris returning into a gully or room.

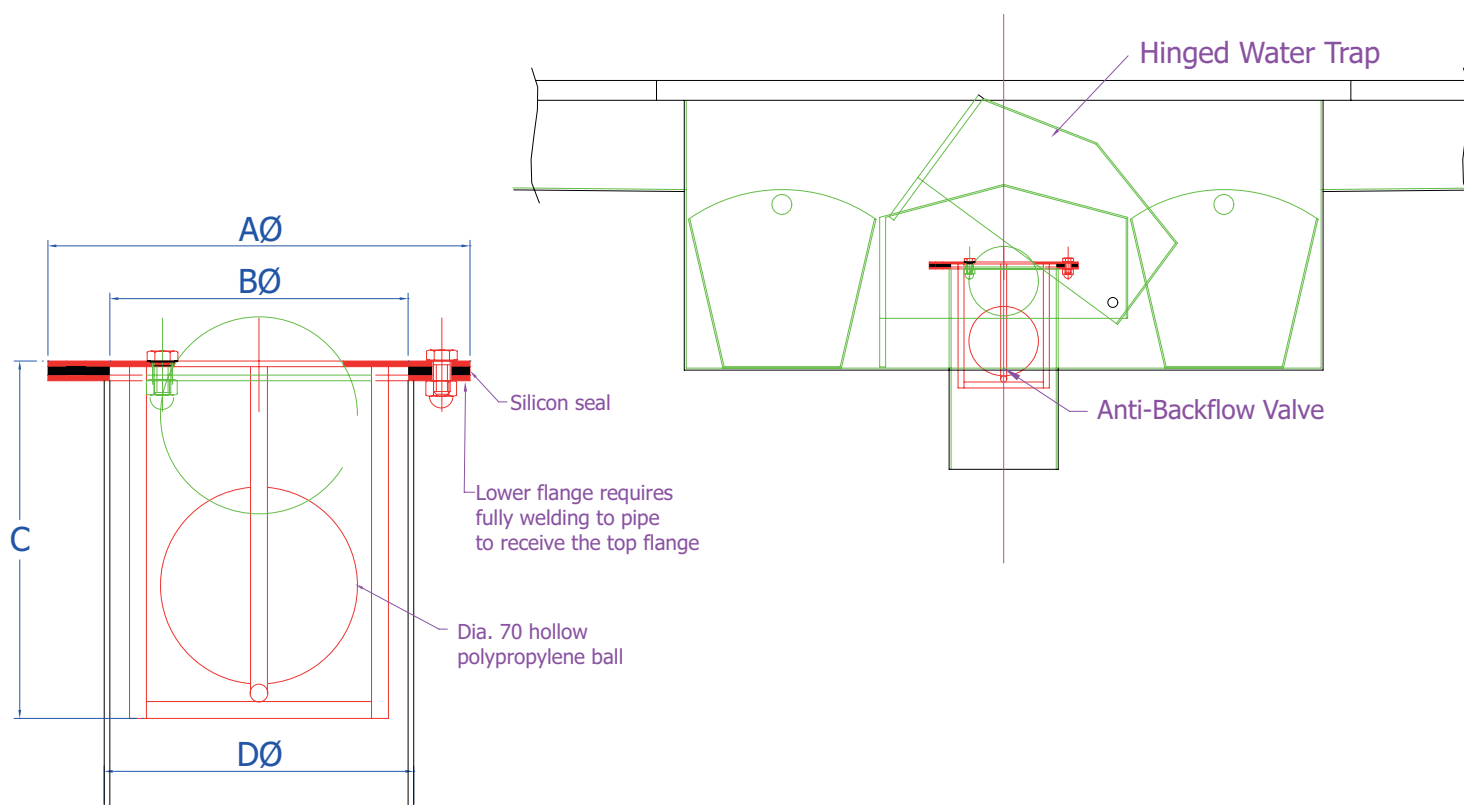
Suitable for hygienic environments accessed by medium load factory traffic.

The Anti Backflow Valve is available in two sizes to accommodate different flow rates.

Technical Specification

- > 2mm stainless steel top plate.
- > 6mm stainless steel cage.
- > 3mm silicon seal.
- > 70mm diameter hollow polypropylene ball.
- > Grade 304 stainless steel (British Standard 304S31, Euronorm 1.4301).

MODEL	REF	VALVE DIMENSIONS				FLOW RATES
		A	B	C	D	
VALVE 110	ABV110V	150	106	127	110	4.0 Ltr/Sec
VALVE 160	ABV160V	200	156	127	160	9.0 Ltr/Sec



The blue measurements indicate the variable dimensions shown in the chart above. All dimensions in mm.

ASPEN Vertical Anti Backflow Valve

Load Class up to FACTA C250



ASPEN Stainless hardworking stainless steel products for hardwearing environments:
British engineered with a lifetime guarantee.

ASPEN Drainage System

As the UK based designer and manufacturer of all ASPEN Stainless, Canal Engineering is able to offer a full range of products to complete your drainage system and can customize any of its Units or manufacture complete bespoke drainage systems.

Key Benefits

The Valve is designed to eliminate the backflow of foul water and debris into a Gully or room.

Maintenance

Stainless steel equipment should be occasionally thoroughly checked for retained deposits and concentrated fluid build up that causes corrosion.

Cleaning

Many factors affect the choice of cleaning method and frequency of its application. Suitable methods for stainless steel are: water and steam; mechanical non abrasive scrubbing; organic solvents and mild detergents.



Vertical Anti Backflow Valve Sample

ASPEN Drainage Installation

Canal Engineering offer supply only or full installation, with fully welded and polished joints, and commissioning. Canal Engineering also offer on-going annual inspection and maintenance contracts.

For advice regarding the most suitable ASPEN Stainless for you please contact our technical sales team today to discuss your requirements.

ASPEN Drainage Options

- > Available in grade 316 stainless steel (British Standard 316S31, Euronorm 1.4401).
- > Suited for the ASPEN Gullies and Outlets

ASPEN Whistler Sealed Gully

Load Class up to FACTA A15



ASPEN Stainless hardworking stainless steel products for hardwearing environments:
British engineered with a lifetime guarantee.

Product Description


The Standard Whistler Gully is usually used for condense pipes, sink waste, and rodding access. The Gully has a bead blasted finish with or without a back inlet. The removable Gully cover is sealed and locked in place and can be in-filled to incorporate the colour, finish and functionality of the surrounding floor surface.

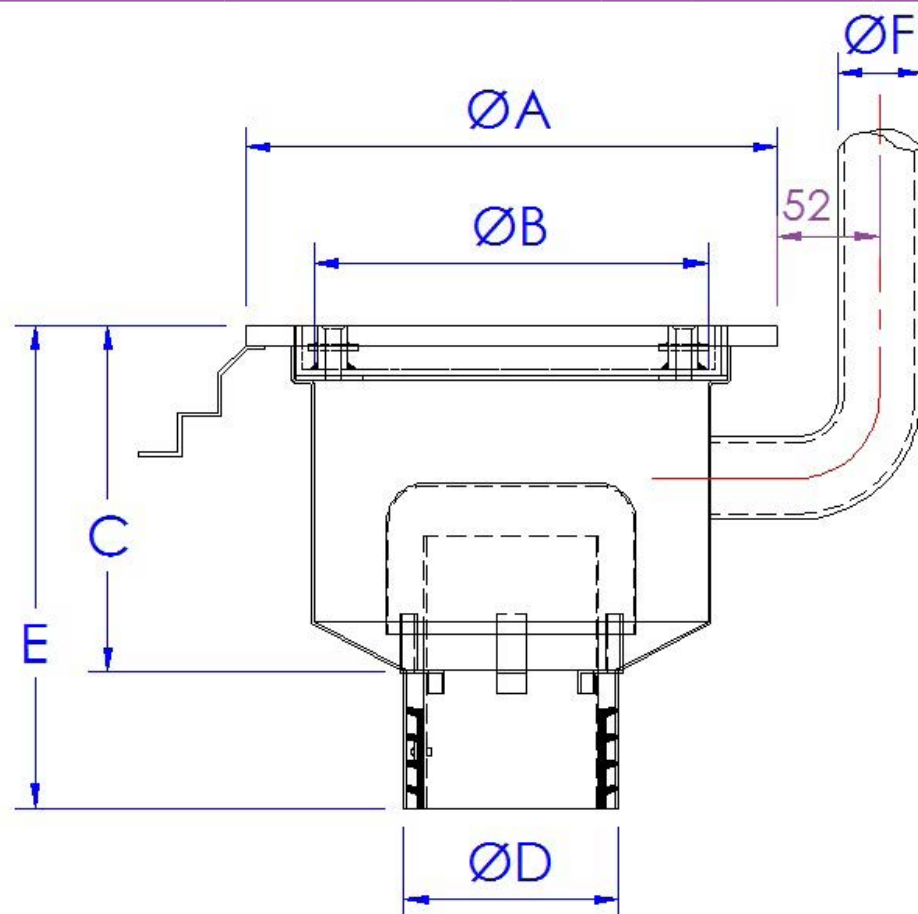
Suitable for hygienic environments accessed by pedestrian factory traffic.

The Whistler Gully is available in one outlet size.

Technical Specification

- > Body: made from 1.5mm stainless steel.
- > 1.5mm stainless steel trap.
- > Sealed cover.
- > Grade 304 stainless steel (British Standard 304S31, Euronorm 1.4301).

MODEL	REF	GULLY DIMENSIONS						FACTA LOAD CLASS
		A	B	C	D	E	Fø	
WHISTLER 110	WG110	270	200	175	110	235	38/42/50	



The blue measurements indicate the variable dimensions shown in the chart above. All dimensions in mm.



+44 (0)115 986 6321
aspen@canalengineering.co.uk
www.aspen.eu.com

ASPEN Whistler Sealed Gully

Load Class up to FACTA A15



ASPEN Stainless hardworking stainless steel products for hardwearing environments:
British engineered with a lifetime guarantee.

ASPEN Drainage System

As the UK based designer and manufacturer of all ASPEN Stainless, Canal Engineering is able to offer a full range of products to complete your drainage system and can customize any of its Units or manufacture complete bespoke drainage systems.

Key Benefits

The Whistler Gully has a sealed cover to prevent smells entering the room.

The body of the gully connects directly to the sub terrain drainage pipe.

Maintenance

Stainless steel equipment should be occasionally thoroughly checked for retained deposits and concentrated fluid build up that causes corrosion.

Cleaning

Many factors affect the choice of cleaning method and frequency of its application. Suitable methods for stainless steel are: water and steam; mechanical non abrasive scrubbing; organic solvents and mild detergents.

ASPEN Drainage Installation

Canal Engineering offer supply only or full installation, with fully welded and polished joints, and commissioning. Canal Engineering also offer on-going annual inspection and maintenance contracts.

For advice regarding the most suitable ASPEN Stainless for you please contact our technical sales team today to discuss your requirements.



Whistler Sealed Gully Sample

ASPEN Drainage Options

- > Available in grade 316 stainless steel (British Standard 316S31, Euronorm 1.4401).
- > Square top plate for tiling.
- > Gully Membrane Flange Disc (see TD66).

ASPEN Tiehack Heavy Duty Round Top Drain Gully

Load Class up to FACTA C250



ASPEN Stainless hardworking stainless steel products for hardwearing environments:
British engineered with a lifetime guarantee.

Product Description



The Standard Tiehack HD Drain Gully is the most popular heavy duty unit, which is bead blasted with easy access for Rodding.

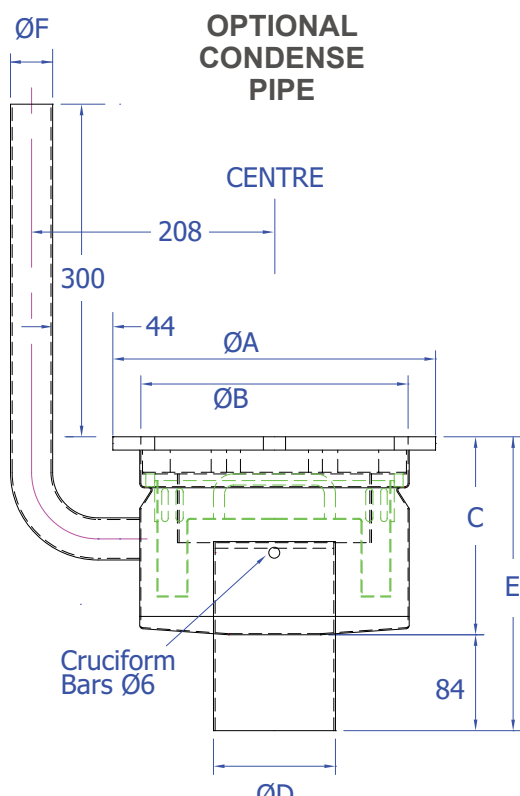
It has a robust construction suitable for hygienic environments accessed by heavy load factory traffic.

This Drain Gully is available in one outlet size with the option of a condense pipe.

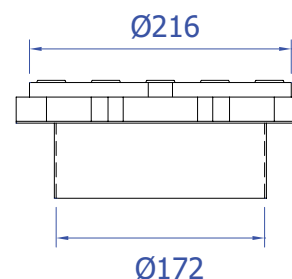
Technical Specification

- > Body: made from 1.2mm stainless steel.
- > Top: made from 8mm stainless steel Durbar.
- > Crucifix across the outlet.
- > Increased material guage on the trap.
- > Extra support blocks on the cover & trap.
- > Grade 304 stainless steel (British Standard 304S31, Euronorm 1.4301)

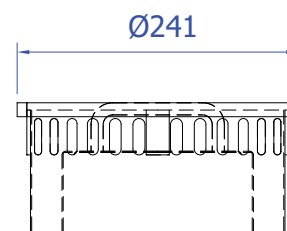
MODEL	REF	GULLY DIMENSIONS						FLOW RATES	FACTA LOAD CLASS
		A	B	C	D	E	F		
TIEHACK 110	TGR110HD	290	243	176	110	260	NA	4.0 Ltr/Sec	
TIEHACK 110 CONDENSE	TGR110HDC	290	243	176	110	260	38/42/50	4.0 Ltr/Sec	



COVER



BASKET



All dimensions in mm.



+44 (0)115 986 6321
 aspen@canalengineering.co.uk
 www.aspen.eu.com

ASPEN Tiehack Heavy Duty Round Top Drain Gully

Load Class up to FACTA C250



ASPEN Stainless hardworking stainless steel products for hardwearing environments:
British engineered with a lifetime guarantee.

ASPEN Drainage System

As the UK based designer and manufacturer of all ASPEN Stainless, Canal Engineering is able to offer a full range of products to complete your drainage system and can customize any of its Units or manufacture complete bespoke drainage systems.

Key Benefits

A versatile, robust and popular gully for use in any area utilising a solid and well established design to provide maximum drainage and good filtration of solids in heavily trafficked areas.

Maintenance

Stainless steel equipment should be occasionally thoroughly checked for retained deposits and concentrated fluid build up that causes corrosion.

Cleaning

Many factors affect the choice of cleaning method and frequency of its application. Suitable methods for stainless steel are: water and steam; mechanical non abrasive scrubbing; organic solvents and mild detergents.



Tiehack Heavy Duty Round Top Gully Expanded Sample

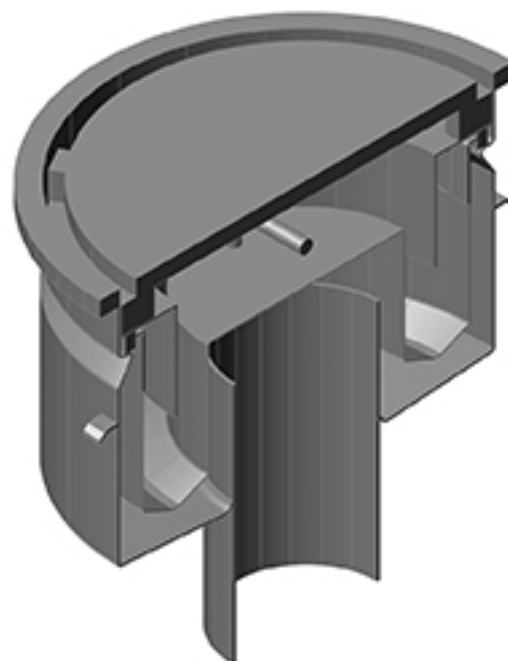
ASPEN Drainage Installation

Canal Engineering offer supply only or full installation, with fully welded and polished joints, and commissioning. Canal Engineering also offer on-going annual inspection and maintenance contracts.

For advice regarding the most suitable ASPEN Stainless for you please contact our technical sales team today to discuss your requirements.

ASPEN Drainage Options

- > Available in grade 316 stainless steel (British Standard 316S31, Euronorm 1.4401).
- > A range of different Gully Covers.
- > Locking Gully Cover.
- > Gully Membrane Flange.
- > Tundish



Tiehack Heavy Duty Round Top Gully 3D Render

ASPEN Tiehack Heavy Duty Square Top Drain Gully

Load Class up to FACTA C250



ASPEN Stainless hardworking stainless steel products for hardwearing environments:
British engineered with a lifetime guarantee.

Product Description



The Standard Tiehack HD Drain Gully is the most popular heavy duty unit, which is bead blasted with easy access for Rodding.

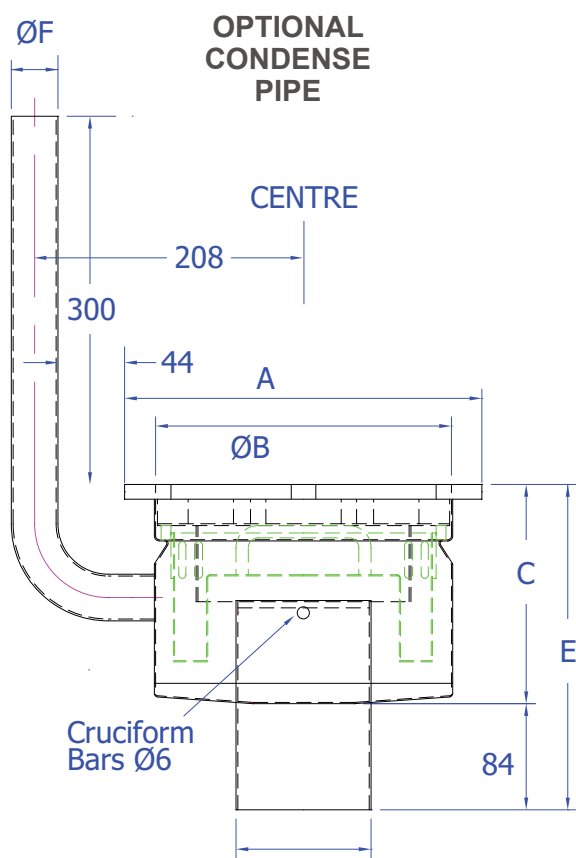
It has a robust construction suitable for hygienic environments accessed by heavy load factory traffic.

This Drain Gully is available in one outlet size with the option of a condense pipe.

Technical Specification

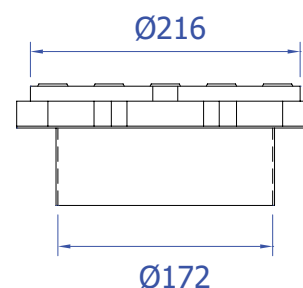
- > Body: made from 1.2mm stainless steel.
- > Top: made from 8mm stainless steel Durbar.
- > Crucifix across the outlet.
- > Increased material guage on the trap.
- > Extra support blocks on the cover & trap.
- > Grade 304 stainless steel (British Standard 304S31, Euronorm 1.4301)

MODEL	REF	GULLY DIMENSIONS						FLOW RATES	FACTA LOAD CLASS
		A	B	C	D	E	F		
TIEHACK 110	TGS110HD	290	243	176	110	260	NA	4.0 Ltr/Sec	
TIEHACK 110 CONDENSE	TGS110HDC	290	243	176	110	260	38/42/50	4.0 Ltr/Sec	

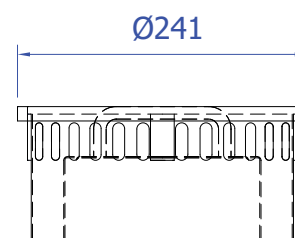


All dimensions in mm.

COVER



BASKET



+44 (0)115 986 6321
 aspen@canalengineering.co.uk
 www.aspen.eu.com

ASPEN Tiehack Heavy Duty Square Top Drain Gully

Load Class up to FACTA C250



ASPEN Stainless hardworking stainless steel products for hardwearing environments:
British engineered with a lifetime guarantee.

ASPEN Drainage System

As the UK based designer and manufacturer of all ASPEN Stainless, Canal Engineering is able to offer a full range of products to complete your drainage system and can customize any of its Units or manufacture complete bespoke drainage systems.

Key Benefits

A versatile, robust and popular gully for use in any area utilising a solid and well established design to provide maximum drainage and good filtration of solids in heavily trafficked areas.

Maintenance

Stainless steel equipment should be occasionally thoroughly checked for retained deposits and concentrated fluid build up that causes corrosion.

Cleaning

Many factors affect the choice of cleaning method and frequency of its application. Suitable methods for stainless steel are: water and steam; mechanical non abrasive scrubbing; organic solvents and mild detergents.



Tiehack Heavy Duty Round Top Gully Expanded Sample

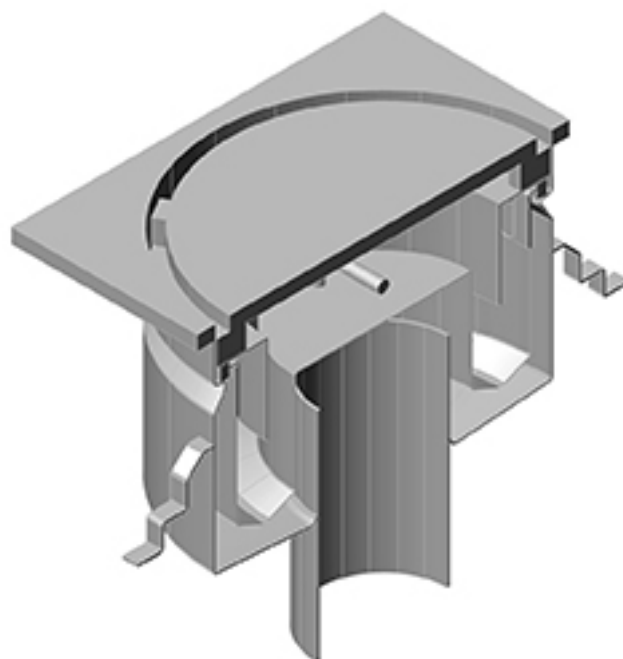
ASPEN Drainage Installation

Canal Engineering offer supply only or full installation, with fully welded and polished joints, and commissioning. Canal Engineering also offer on-going annual inspection and maintenance contracts.

For advice regarding the most suitable ASPEN Stainless for you please contact our technical sales team today to discuss your requirements.

ASPEN Drainage Options

- > Available in grade 316 stainless steel (British Standard 316S31, Euronorm 1.4401).
- > A range of Gully Covers.
- > Locking Gully Cover.
- > Gully Membrane Flange.
- > Tundish.



Tiehack Heavy Duty Square Top Gully 3D Render

ASPEN Tundish for Gullies



ASPEN Stainless hardworking stainless steel products for hardwearing environments:
British engineered with a lifetime guarantee.

Product Description

This standard Tundish is used on top of gully covers from the Aspen Stainless Drainage Range.

The Tundish provides a waste air break between the outlet Gully and the feed pipe.

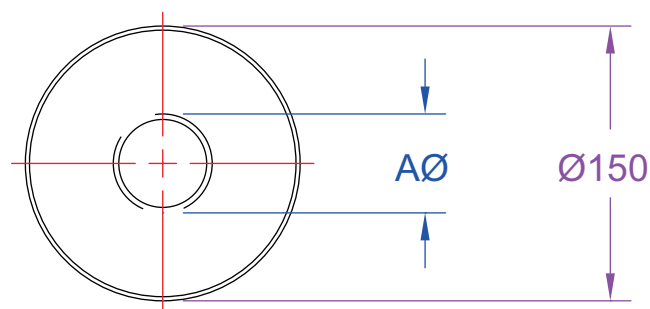
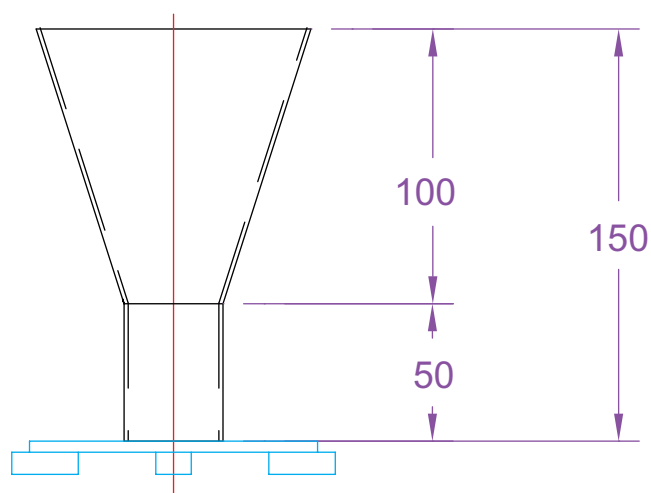
Suitable for hygienic environments.

The standard Tundish is available in one size and as a straight opening only.

Technical Specification

- > 50ømm stainless steel pipe.
- > Straight stainless steel funnel opening.
- > Grade 304 stainless steel (British Standard 304S31, Euronorm 1.4301)

MODEL	REF	TUNDISH DIMENSIONS
		A
STRAIGHT	TDISHS G	50ø



All dimensions in mm.



+44 (0)115 986 6321
aspen@canalengineering.co.uk
www.aspen.eu.com

ASPEN Tundish for Gullies



ASPEN Stainless hardworking stainless steel products for hardwearing environments:
British engineered with a lifetime guarantee.

ASPEN Drainage System

As the UK based designer and manufacturer of all ASPEN Stainless, Canal Engineering is able to offer a full range of products to complete your drainage system and can customize any of its Units or manufacture complete bespoke drainage systems.

Key Benefits

This design is ideal for easy clean and maintenance and compliments the total ASPEN drainage package.

Maintenance

Stainless steel equipment should be occasionally thoroughly checked for retained deposits and concentrated fluid build up that causes corrosion.

Cleaning

Many factors affect the choice of cleaning method and frequency of its application. Suitable methods for stainless steel are: water and steam; mechanical non abrasive scrubbing; organic solvents and mild detergents.



Tundish and gully cover sample

ASPEN Drainage Installation

Canal Engineering offer supply only or full installation, with fully welded and polished joints, and commissioning. Canal Engineering also offer on-going annual inspection and maintenance contracts.

For advice regarding the most suitable ASPEN Stainless for you please contact our technical sales team today to discuss your requirements.

ASPEN Drainage Options

> Available in grade 316 stainless steel (British Standard 316S31, Euronorm 1.4401).