



**Marshalls**  
*Creating Better Spaces*

# STRATIC COLLECTION

Landscape House, Premier Way,  
Lowfields Business Park,  
Elland HX5 9HT  
United Kingdom  
Tel: 0333 000 20 50  
[www.marshalls.co.uk/commercial](http://www.marshalls.co.uk/commercial)

Registered Office:  
Marshalls plc,  
Landscape House, Premier Way,  
Lowfields Business Park,  
Elland, HX5 9HT  
United Kingdom

  
**Marshalls**  
*Creating Better Spaces*





*...Bringing together the smooth lines and contours  
from the world of automotive design.*





## RANGE OVERVIEW

Introducing the new Stratic Collection from Marshalls, a modern and dynamic range of products that mimic the finishes, smooth lines and contours of the automotive industry.

A combination of materials including Accoya timber, cast aluminum, steel and stainless steel provides an extremely durable and low maintenance solution, offered in a choice of contemporary colour options.

Choose from a range of 6 individual elements to suit the landscape, then select your preferred timber stain and finally complement with a metallic powder coat from the options available.

## CONCEPT DESIGN

The concept design of Stratic evolved from a close partnership with De Montfort University. Working closely with students from the Product and Furniture design course, we challenged them to look at the changing needs of social spaces and the durability of products that sit within them.

We understand the challenges faced by architects and wanted to ensure premium design and high quality materials were combined with reduced maintenance cycles, all at competitive pricing to suit a range of projects.

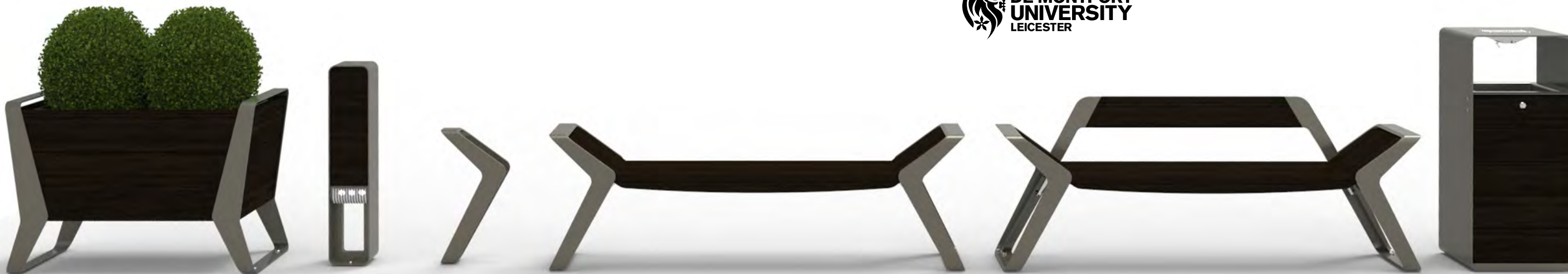


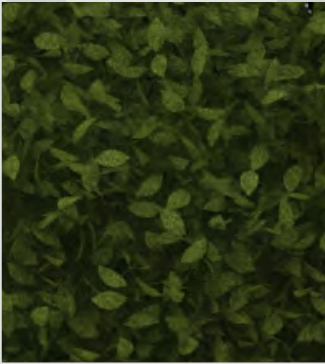
Timber Stain - Onyx

Timber Stain - Copper

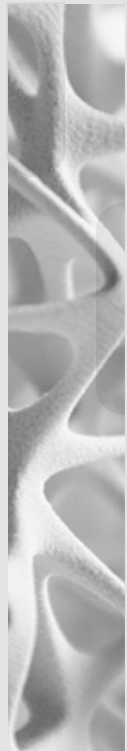
Powder Coat - Quartz

Powder Coat - Carbon





  
**Marshall's**  
*Creating Better Spaces*



Recommended Colour Combinations



## SEATING OVERVIEW

The Stratic seating range consists of a seat and bench and combines elegant design with great flexibility. Smooth angles and polished finishes are possible due to a combination of defined aluminium castings, coated Accoya timber and metallic powder coating. The choice of robust and durable materials ensures that Stratic is suitable for both high and low trafficked areas.

Quick and easy surface mount installation means the products can be installed quickly, and moved easily if needed as well. The high design, sleek finish, lightweight structure and ease of installation make Stratic an ideal choice for courtyard spaces, atriums or retail settings.

### Recommended Colour Combinations



**Belly Detailing** –  
Wider timber section design detail



**End Profile** –  
Angled, contoured design  
taking inspiration from  
automotive design



**Aluminium Castings** –  
Consistent high quality & finish



**Wide Timber Slats** –  
Striking wide slats add to the  
design detail



**Design Coordination** – design  
language consistency  
between seating elements and  
other items in the range



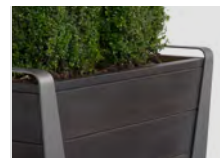
## PLANTER

Flexibility and coordination are at the core of the Stratic Collection. All elements in the wider range seamlessly mirror the design language of the seating, allowing you to pick the right items for the right project.

The wider Stratic range consists of a planter, litter bin, cycle stand and LED marker.

With an estimated 2.5 billion of the world's population living in urban environments by 2050, more and more spaces are being designed with the user's wellbeing in mind. One key factor to a person's wellbeing is their access to nature, and the positive impact this can have on health, productivity and mood. The Stratic Planter at 206 litres can allow for larger areas of greening to be incorporated into urban environments, and with a built in irrigation system little maintenance would be required.

### Recommended Colour Combinations



**Integrated Irrigation System** -  
capillary action to feed the plants  
where it needs water the most -  
the roots. 100% water efficiency  
and reduced watering frequency.



**Durable Frame**-  
Robust steel frame for  
added strength

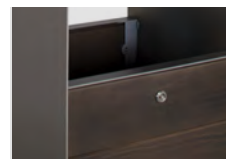


## LITTER BIN

The demands on Street Furniture and an increasing population have put pressure on maintenance cycles and costs.

The Stratic Litter Bin is available as a standard bin or mixed recycling version, with an 85 litre capacity. A galvanised steel liner is provided for ease of maintenance when waste is collected.

### Recommended Colour Combinations



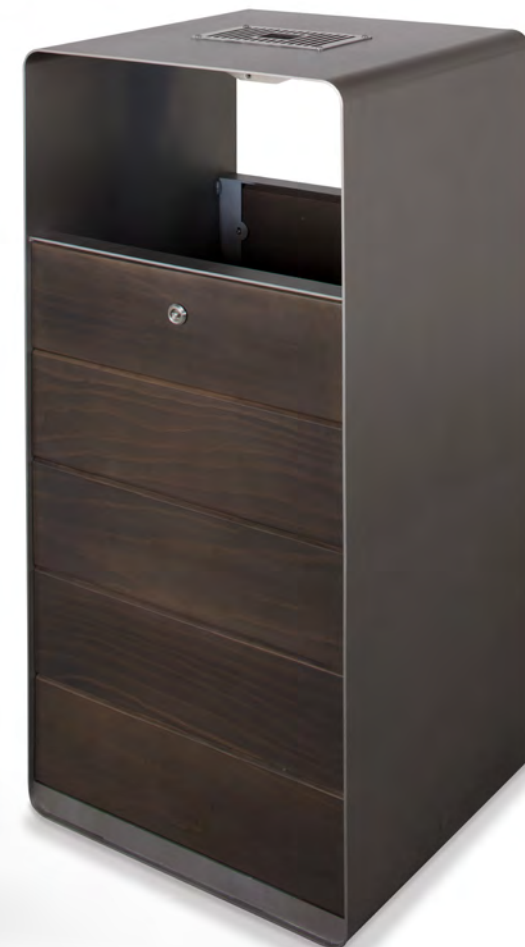
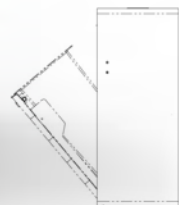
### Ease of Maintenance -

A front tilting mechanism with integrated lock, allows for ease of opening and waste removal.



### Top of Bin-

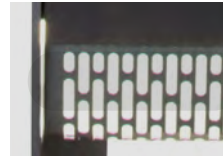
Options: Integrated ash & gum tray.



## CYCLE STAND & LED MARKER

Increased travel costs and concern for the environment mean cycling has never been more popular. The slim and lightweight profile of the Stratic Cycle Stand mirrors that of the profiles of the seat & bench to ensure a consistent design language on the scheme.

Integrated lighting can add another dimension to a landscape, creating bustling 24 hour spaces. The LED marker is the ideal tool for guidance and demarcation within schemes and adds design details.



### LED Marker -

Decorative grille with integrated dimmable LED to help with demarcation and aesthetic



### Cycle stand -

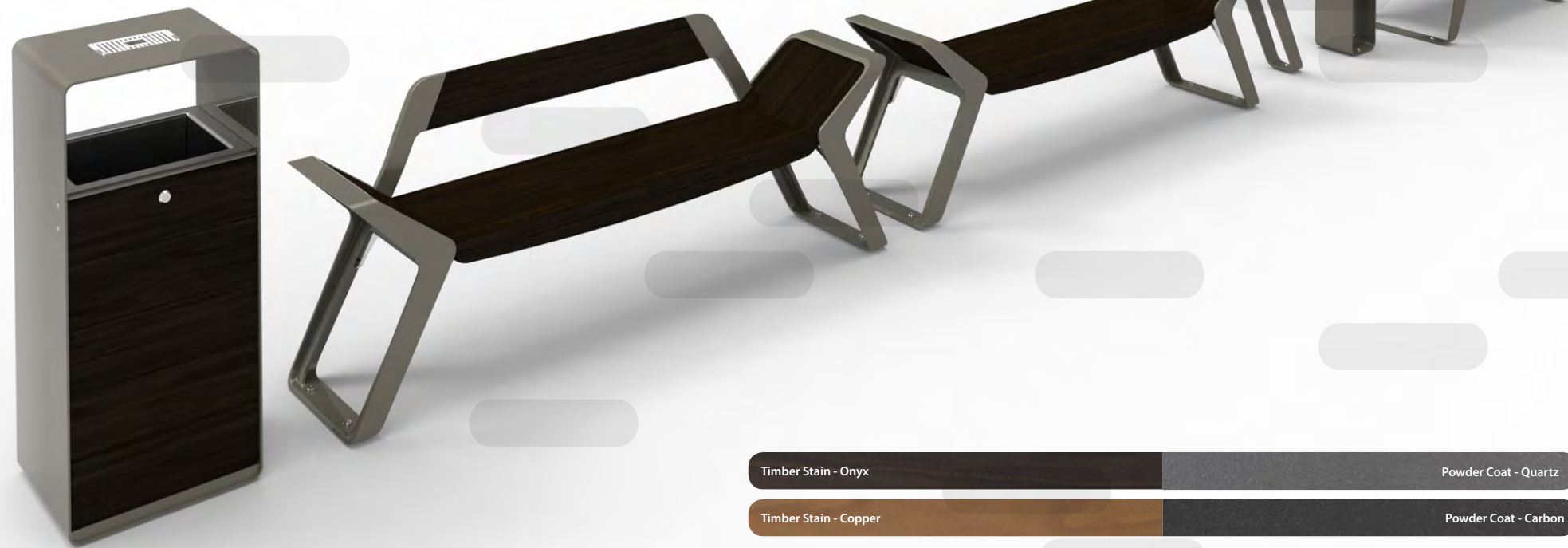
Aluminium castings - slim and lightweight profile

### Recommended Colour Combinations





Bringing together the **smooth lines** and **contours**  
from the world of automotive design.



Timber Stain - Onyx

Powder Coat - Quartz

Timber Stain - Copper

Powder Coat - Carbon

