

HIGH PERFORMANCE ANTISLIP ANTIWEAR CAST METAL STAIR NOSING

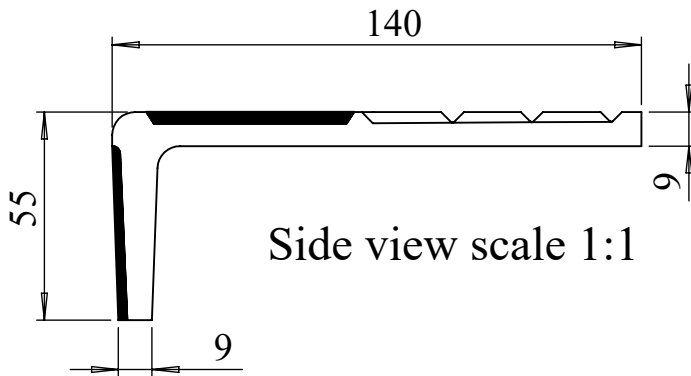
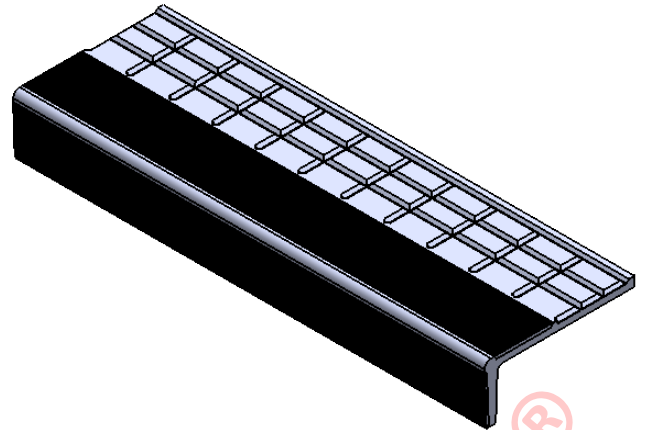


DATA SHEET: SN293/WL/140 [®]	
DATE: Sept 2019	ISSUE: 2
ITEM: Stair Nosing	

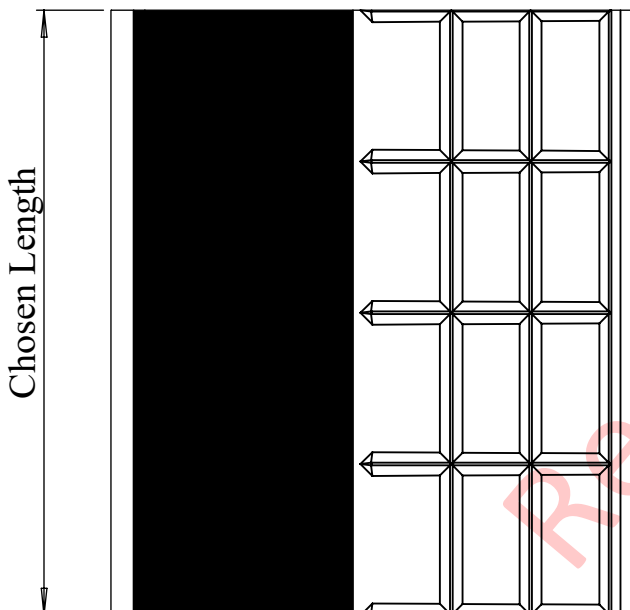
Item: AATi™ type SN293/WL/140[®] - Wideline™ - stair nosing with silicon carbide granules cast into the metal matrix of the wearing surface. The front edge is defined by coloured abrasive inserts and a continuous coloured line along the riser face.

Application: For heavily used public stairways requiring high performance, extended life stair nosing of attractive appearance. Unique tapered surface grooves and cast in silicon carbide particles ensure safe performance in wet or dry conditions.

Materials: Nickel Bronze, Gunmetal, Aluminium. Safety Black inserts supplied as standard, other colours are available on request.



This is a registered design and complies with BS:8300 Document M.



Special attention should be given to installation & drainage of this product. For further advice please speak to a member of AATi's technical department. Dimensions shown are nominal and subject to AATi manufacturing tolerances.