

Interpon D2525 Structura : Super Durable Powder Coatings



Powder Coatings for Metal Architecture



Structura is a range for use on exterior architectural metal components.

The fine texture aspect shown on this card is made with AkzoNobel's Interpon D2525 technology. **Interpon D2525** is a Super Durable powder coating that offers significantly higher gloss retention and resistance to colour change than standard durability powders, it meets the demanding weathering requirements of the leading industry specifications Qualicoat class 2, GSB Master, and AAMA 2604, as well as BS EN 12206.

Structura, thanks to its high toughness compared to smooth coatings, means your design will be long-lasting, keeping its stylish look for many years to come. When specifying or ordering, ensure you include the full product designation.

e.g.

Product: [Interpon D2525 Structura](#)
Shade: [RAL 6005](#)
Product code: [YK305F](#)

Structura est une gamme de peintures en poudre destinée au revêtement d'éléments métalliques pour l'architecture extérieure.

L'aspect fine texture présenté sur ce nuancier est issu de la technologie Haute Durabilité Interpon D2525 d'AkzoNobel. **Interpon D2525** est une gamme de peinture en poudre Super Durable qui offre une excellente rétention de brillance et résistance au changement de couleur dans le temps, les revêtements Interpon D2525 satisfont parfaitement aux exigences des principales normes européennes pour l'architecture, parmi lesquelles Qualicoat Classe 2 ; GSB Master, AAMA 2604 et BS EN 12206.

La gamme Structura, grâce à sa dureté nettement supérieure aux aspects lisses, garantit à vos projets une conception durable qui gardera son esthétique pendant de nombreuses années. Lors de la prescription ou la commande d'un produit de la gamme Structura, assurez-vous de bien mentionner la désignation complète du produit.

Par exemple

Produit : [Interpon D2525 Structura](#)
Teinte : [RAL 6005](#)
Code produit : [YK305F](#)



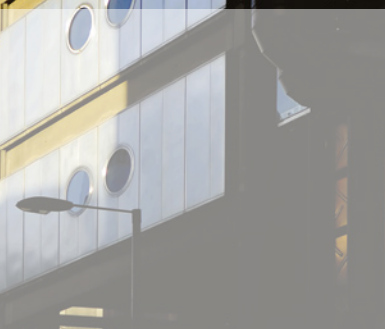
Interpon D2525 Structura

All of the powder coatings presented in this color card have been optimized to give the highest consistency of finish during the application processes.

However, slight variations could appear depending on the actual application specification or application of the powder. Our Technical support team is at your disposal.

Toutes les peintures en poudre de ce nuancier ont été étudiées pour apporter la meilleure reproduction d'aspect lors de la mise en œuvre. Toutefois, de légères nuances d'aspect peuvent être constatées en fonction des conditions d'application.

Consulter notre documentation avant préconisation ou mise en œuvre. Notre support technique est à votre disposition.



For more information or to request a sample speak to your local representative or visit www.interpon.com

Natural and dense shades

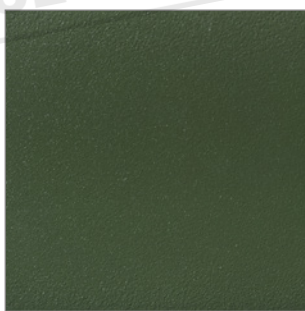


COLORS ARE REPRESENTATIVE ONLY
PLEASE REQUEST A SAMPLE



RAL 7034

YL334F



RAL 6003

YK303F



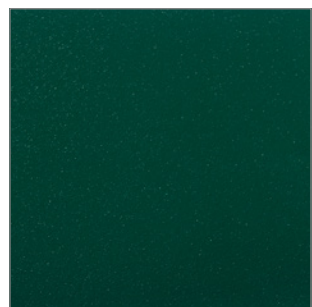
RAL 9005

YN305F



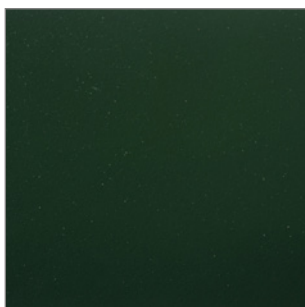
RAL 7024

YL324F



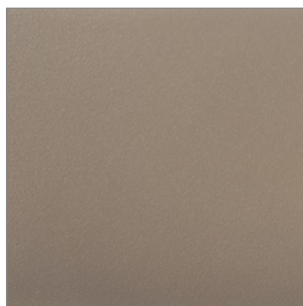
RAL 6005

YK305F



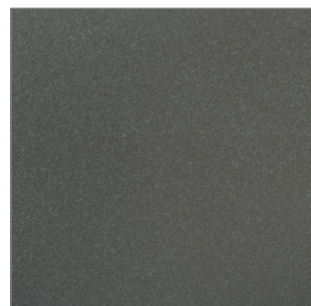
RAL 6009

YK309F



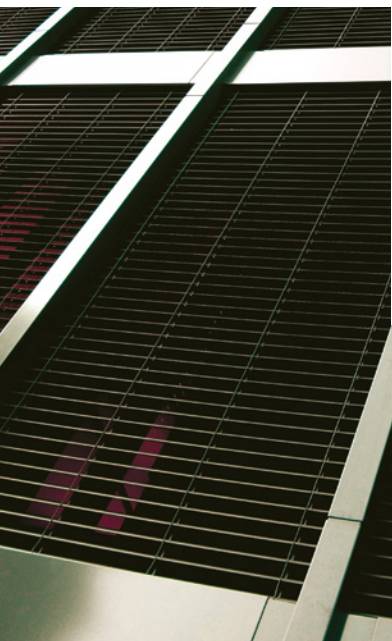
RAL 7006

YL306F

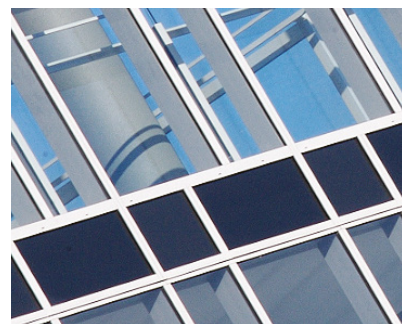


RAL 7022

YL322F



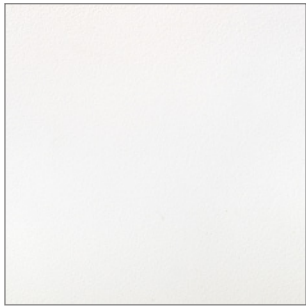
Other colors are available.
For more information or to
request a sample speak to your
local representative or visit
www.interpon.com



Fresh and light shades

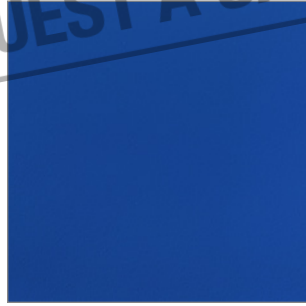


**COLORS ARE REPRESENTATIVE ONLY
PLEASE REQUEST A SAMPLE**



RAL 9016

YA316F



RAL 5010

YJ310F



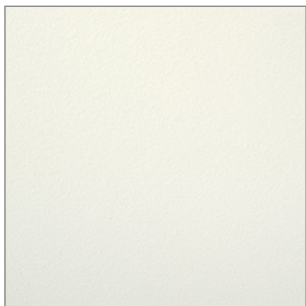
RAL 5023

YJ323F



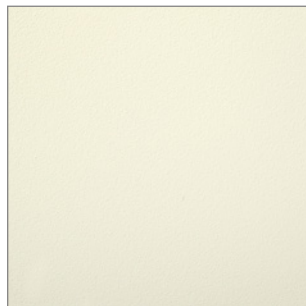
RAL 5024

YJ324F



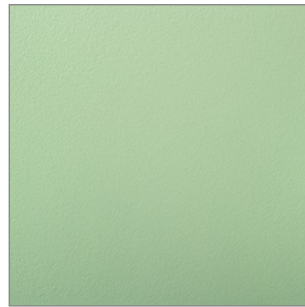
RAL 1013

YD313F



RAL 1015

YD315F



RAL 6021

YK321F



RAL 6017

YK317F



Neutral and strong shades



COLORS ARE REPRESENTATIVE ONLY
PLEASE REQUEST A SAMPLE



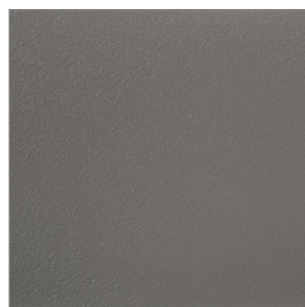
RAL 6029

YK329F



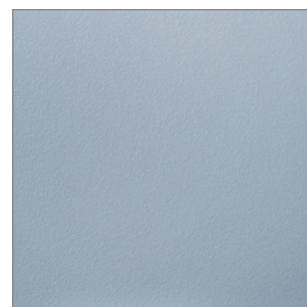
RAL 9010

YA310F



RAL 7039

YL339F



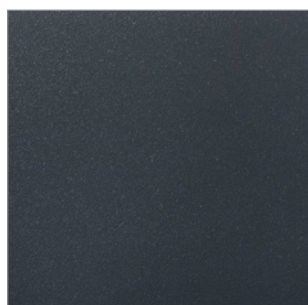
RAL 7040

YL340F



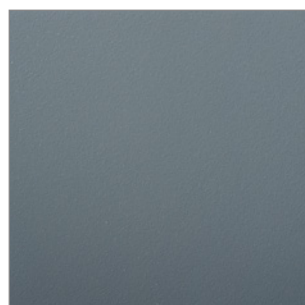
RAL 3004

YG304F



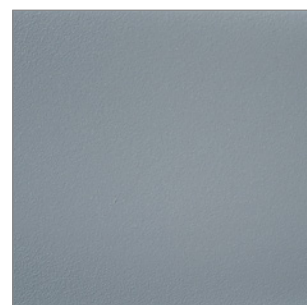
RAL 7016

YL316F



RAL 7012

YL312F

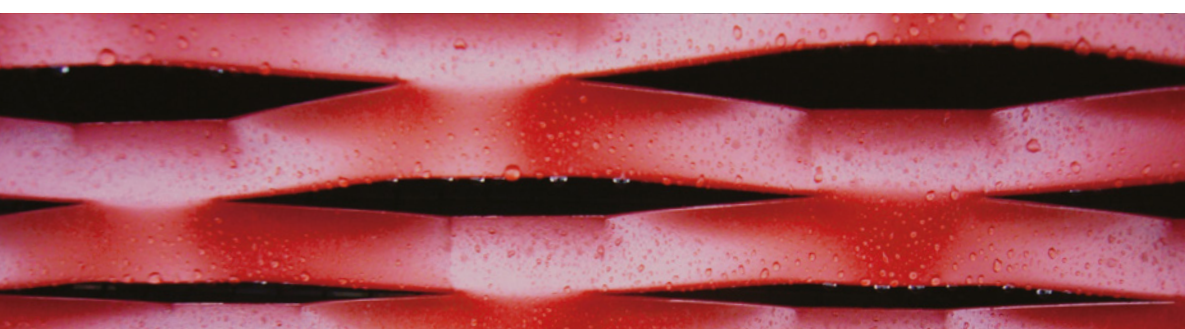


RAL 7037

YL337F



Visit your local
Interpon website for
further information or
scan to order samples



Mineral and deep shades



**COLORS ARE REPRESENTATIVE ONLY
PLEASE REQUEST A SAMPLE**



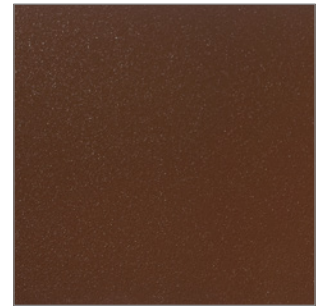
RAL 7035



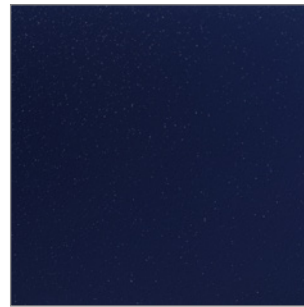
RAL 8019



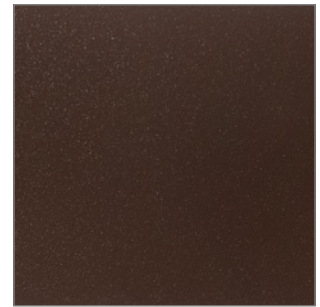
RAL 3005



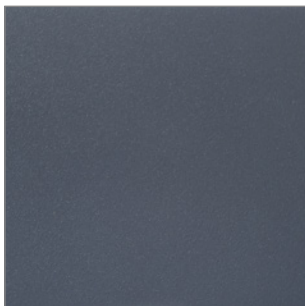
RAL 8011



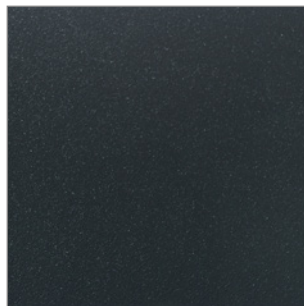
RAL 5003



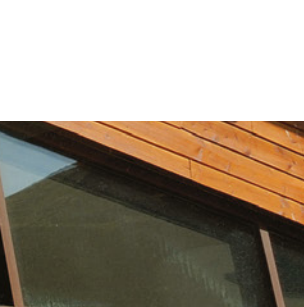
RAL 8014



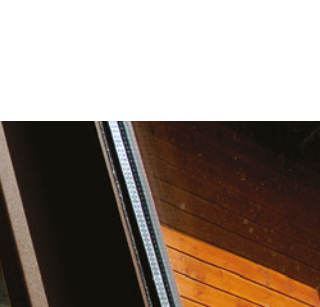
RAL 7015



RAL 7021



YJ303F



YM314F

YL335F

YM319F

YL315F

YL321F



Other colors are available.
For more information or to
request a sample speak to your
local representative or visit
www.interpon.com





Follow AkzoNobel Powder Coatings
on Facebook



Visit our Global Website: www.interpon.com
or speak to your local representative

Interpon[®]

AkzoNobel endeavours to ensure the information contained in this publication is correct at the time of printing. All products referred to and any technical advice provided is subject to the standard terms and conditions of sale of the AkzoNobel supplying company.

Copyright ©2016 Akzo Nobel Powder Coatings Ltd. Interpon is a registered trademark of AkzoNobel. Issue 4 - 09/2016. Printed in Italy.